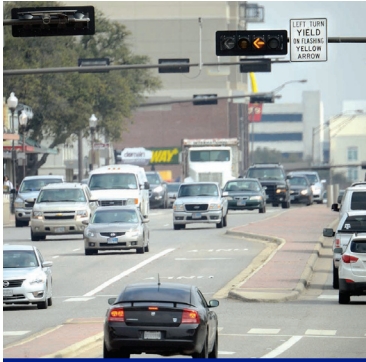




# 2016 TexITE Spring Meeting

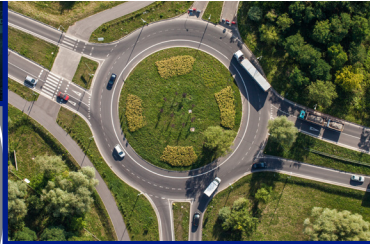
GALVESTON ISLAND ▲ MARCH 30–APRIL 1



**SYSTEM REIMAGINING**  
Project Information  
and Opportunities for  
Community Input

**TAKE ONE**

**metro**  
METRO  
METRO.ORG • (713) 625-4000



## SCHEDULE AT A GLANCE

### WEDNESDAY, MARCH 30

5:30 a.m. – 1:00 p.m.	<b>Fishing Tournament</b>	<i>Please meet at the Marina at Moody Gardens.</i>
8:00 a.m. – 7:00 p.m.	<b>Registration Desk Open</b>	Group Registration Desk
8:00 a.m. – 5:00 p.m.	<b>Workshop: Traffic Technology Training</b>	Ivy Rooms, Salon H
9:00 a.m. – 4:00 p.m.	<b>Workshop: P.E. Exam Preparation</b>	Salon FG
10:00 a.m. – 5:00 p.m.	<b>Highway Products Group Setup</b>	Moody I Ballroom
12:00 a.m. – 1:00 p.m.	<b>Workshop: Lunch</b>	Vine 2
1:00 p.m. – 4:00 p.m.	<b>Technical Tour: U.S. Coast Guard Traffic Operations Center</b>	Bus departs at 1:00 p.m. <i>Please meet bus in front of the hotel.</i>
1:00 p.m. – 4:00 p.m.	<b>Technical Tour: Bicycle Tour</b>	Please meet in the hotel lobby.
1:30 p.m. – 4:00 p.m.	<b>Technical Tour: Galveston Ferry</b>	Transportation departs at 1:30 p.m. <i>Please meet in the hotel lobby.</i>
1:30 p.m. – 4:00 p.m.	<b>Technical Tour: Port of Galveston</b>	Bus departs at 1:30 p.m. <i>Please meet bus in front of the hotel.</i>
1:30 p.m. – 4:30 p.m.	<b>District Board Meeting</b>	Vine 1
4:00 p.m. – 5:00 p.m.	<b>Student and Younger Member Meet and Greet</b>	Moody Gardens Lobby Bar
5:00 p.m. – 6:00 p.m.	<b>Workshop: Professional Ethics</b>	Salon FGH
6:00 p.m. – 8:00 p.m.	<b>Highway Products Group Exhibits and Reception</b>	Moody I Ballroom
8:00 p.m. – 12:00 a.m.	<b>Texas Hold 'em Poker Tournament</b>	Floral Hall A
8:30 p.m. – ?	<b>Tone Def</b>	Vine 2

### THURSDAY, MARCH 31

7:30 a.m. – 5:00 p.m.	<b>Registration Desk Open</b>	Group Registration Desk
8:00 a.m. – 8:30 a.m.	<b>Moderator Meeting</b>	Vine 1
8:30 a.m. – 9:30 a.m.	<b>Committee Meetings</b>	Vine 2
8:30 a.m. – 9:30 a.m.	<b>Student and Younger Member Professional Development</b>	Salon E
8:30 a.m. – 3:30 p.m.	<b>Exhibit Hall Open - Breakfast served until 10:30 a.m.</b>	Moody I Ballroom
9:30 a.m. – 11:30 a.m.	<b>PLENARY SESSION 1</b>	Salon E
12:00 p.m. – 1:15 p.m.	<b>Kick-Off Luncheon</b>	Northside Floral Ballroom
1:30 p.m. – 3:00 p.m.	<b>PLENARY SESSION 2</b>	Salon E
3:00 p.m. – 3:30 p.m.	<b>Student Poster Session and Break</b>	Moody Ballroom Pre-Function
3:30 p.m. – 5:00 p.m.	<b>CONCURRENT SESSIONS 3A and 3B</b>	Salon FGH & Ivy Room
6:00 p.m. – 9:00 p.m.	<b>Thursday Night Social: Tall Ship Elissa</b>	<i>Please meet busses in front of the hotel.</i>
9:00 p.m. – 12:00 a.m.	<b>Thursday Late-Night Social: Brew Brothers Brew Pub</b>	<i>Continuous shuttle bus running between Pub and hotel.</i>
10:00 p.m. – ?	<b>Tone Def</b>	Vine 2

### FRIDAY, APRIL 1

8:00 a.m. – 12:00 p.m.	<b>Registration Desk Open</b>	Group Registration Desk
8:30 a.m. – 10:00 a.m.	<b>CONCURRENT SESSIONS 4A and 4B</b>	Salon E & Ivy Room
10:00 a.m. – 10:30 a.m.	<b>Student Poster Session and Break</b>	Moody Ballroom Pre-Function
10:30 a.m. – 12:00 p.m.	<b>CONCURRENT SESSIONS 5A and 5B</b>	Salon E & Ivy Room
12:00 p.m. – 1:30 p.m.	<b>Business Luncheon</b>	Moody I Ballroom

## TECHNICAL PROGRAM

### THURSDAY, MARCH 31

#### 9:30 a.m. – 11:30 a.m.

#### PLENARY SESSION 1

#### **Ignite Your Mind With Signal Timing Innovations!**

*Opening Comments by **Brian Shewski**, Kimley-Horn*

- **Special Left-Turn Phasing for Diamond Interchanges**  
*Curtis Jarecki, City of Frisco*
- **Uneven Double Cycles for Improving Progression**  
*Wayne Kurfees, Kimley-Horn*
- **Using Max Timers to Prevent Ped Caused Transitions**  
*Chris Georges, City of San Antonio*
- **Installation Guide for Flashing Yellow Arrows**  
*Matt Tilke, City of Plano*
- **Flashing Yellow Arrows at T Intersections**  
*Dave Carter, City of Richardson*
- **LRT Preemption Utilizing Peer-to-Peer Communications**  
*Gary Jost, TEAL Engineering*
- **Threshold Between Coordinated and Free Operations**  
*Matt Sneed, Texas Department of Transportation*
- **Performance Measures Based Signal Timing**  
*Susan Langdon, Stantec*
- **Dallas Signal Timing Innovations**  
*Mike Wobken, City of Dallas*
- **Benefits of 21st Century NTCIP Phasing Capabilities Over 20th Century Conventional Barriers**  
*Gerry de Camp, De Camp and Associates*

#### 1:30 p.m. – 3:00 p.m.

#### PLENARY SESSION 2

#### **Hurricane Evacuation and Recovery**

*Moderated by **Gabriela Tassin**, Cobb, Fendley and Associates*

- **Hurricanes Rita and Ike: Evacuation Plan and What Was Learned to Improve Future Plans**  
*Mark Sloan, Harris County*
- **53rd Street Reconstruction in Galveston following Hurricane Ike**  
*Ron Bavarian, Freese & Nichols and **Daniel Christodoss**, City of Galveston*
- **Getting Signals Back on Line Following Hurricane Ike**  
*Kevin Tyer, RPS Klotz Associates*

## TECHNICAL PROGRAM

### THURSDAY, MARCH 31 (continued)

3:00 p.m. – 3:30 p.m.

#### STUDENT POSTER SESSION

- **A Lane Changing Decision Model based on Fuzzy Inference System**  
*Esmail Balal, UTEP*
- **Integrating Data for Freight Performance Measurement: Ontology Engineering Approach**  
*Eduardo Torres, UTEP*
- **Transportation Network Resiliency: Towards Universal Measures**  
*Jessica Miramontes, UTEP*
- **Waiting Time Optimization at El Paso del Norte (PDN) Port of Entry**  
*Mariana Borrego, UTEP*
- **A Decision Support System for Traffic Diversion around Construction Closures**  
*Arezoo Memarian, UT Arlington*
- **A Decision Support System for Dynamic Pricing of Managed Lanes**  
*Maryam Zabihi, UT Arlington*
- **Gaussian Mixture Modeling for Grouping Traffic Patterns Using Automatic Traffic Recorder Data**  
*Sunil Madanu, UT Arlington*
- **Project-Based Learning Approach to Teach Concepts of Active Commuting**  
*Ziaur Rahman, UT Arlington*
- **Arterial Signal Coordination with Uneven Double Cycling**  
*Hongmin (Tracy) Zhou, Texas A&M*

3:30 p.m. – 5:00 p.m.

#### CONCURRENT SESSIONS: 3A AND 3B

##### 3A: New Technologies in Transportation

*Moderated by Linc Wright,  
WSP | Parsons Brinckerhoff*

- **Advancements in Surge Protection**  
*Pete Ganci, Emerson Network Power*
- **Engineering for the Worst Conditions**  
*Kenny George, Pelco Products*
- **Ensuring Network Security in a Wireless World**  
*Michael Irvin, Intuicom*
- **Traffic Insights**  
*Roman Prihodko, Miovision*

##### 3B: How Can We Better Plan For the Future?

*Moderated by Anna Martin,  
City of Austin*

- **The Megalopolis Revisited — Planning for Growth**  
*Rick Mobley, RS&H*
- **Performance Measures Based Project Evaluation**  
*Koushik Arunachalam, Arcadis*
- **Beyond Traffic — The Smart City Challenge**  
*Gordon Derr, City of Austin*
- **Livable Centers Initiative**  
*Jeff Taebel, Houston-Galveston Area Council*

## TECHNICAL PROGRAM

### FRIDAY, APRIL 1

8:30 a.m. – 10:00 a.m.

#### CONCURRENT SESSIONS: 4A AND 4B

##### 4A: Safety First! How We Are Improving Safety in Our System

*Moderated by John Denholm,  
Lee Engineering*

- **Road User Behaviors at Pedestrian Hybrid Beacons**  
*Kay Fitzpatrick, Texas A&M Transportation Institute*
- **Practical and Data-Driven: A Roadmap to Safety**  
*Stephen Ratke, Federal Highway Administration*
- **Texas Safety Engineering Initiatives — Finding Bigfoot Prints**  
*Darren McDaniel, Texas Department of Transportation*
- **Innovative Work Zone Safety Practices for I-35**  
*John Habermann, Texas A&M Transportation Institute*

##### 4B: Moving More People and Goods Efficiently and Effectively

*Moderated by Kevin St. Jacques,  
Freese and Nichols*

- **Delivering the Goods in Texas**  
*Caroline Mays, Texas Department of Transportation*
- **Texas High Speed Rail Station Siting and Traffic Access**  
*Shaun McCabe, Texas Central Railway*
- **Houston Metro's Re-imagining Bus Routes**  
*Geoff Carlton, Traffic Engineers Inc.*
- **Waterborn Goods Movement in Texas**  
*Daniel Koesema, Port of Corpus Christi*

10:00 a.m. – 10:30 a.m.

#### STUDENT POSTER SESSION

View Student Poster Sessions in Moody Ballroom Pre-Function. See previous list for student posters.

10:30 a.m. – Noon

#### CONCURRENT SESSIONS: 5A AND 5B

##### 5A: The Ins and Outs of Roundabouts

*Moderated by Norman Hogue,  
Dunaway Associates*

- **Fort Bend Roundabouts**  
*Rick Staigle, Fort Bend County*
- **TxDOT Interchange Conversion, New Waverly, Texas**  
*Andrew Holick, Texas Department of Transportation*
- **Before and After — Benefits of a Roundabout Retrofit**  
*Mike McBride, American Structurepoint*
- **Texas Roundabout Group**  
*Jason Vaughn, City of Sugar Land*

##### 5B: Bridging the Gap Between What Planners Envision and What Engineers Design

*A Conversation Circle Hosted by  
Gary Thomas*

- **Patrick Ezzell, Greater East End Management District, Houston**
- **Christof Spieler, Morris Architects/Houston METRO Board**
- **Jeff Taebel, Houston-Galveston Area Council**
- **Jeff Weatherford, City of Houston**



## PROGRAM HIGHLIGHTS

### WORKSHOP: TRAFFIC TECHNOLOGY TRAINING

*Wednesday, 9:00 a.m. – 5:00 p.m.*

To kick-off the conference, please join us as we learn some of the latest in traffic signal technologies from our manufacturers. The workshop will include sessions on: Trafficware Pod, Econolite Cobalt ATC, GRIDSMAST System, Clary Battery Backup System, Pelco Intellicross Audible Pedestrian System, Acyclica, and Vantage Pegasus. Sessions vary in length from 2-8 hours (see below for schedule).

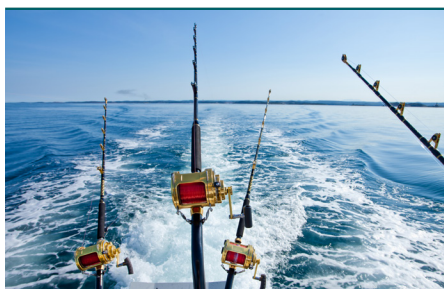
Starting Time	Salon H	Ivy 1	Ivy 2	
8:00 a.m.	Vantage Pegasus	Econolite Cobalt	GRIDSMAST System	
9:00 a.m.			Clary BBU	
10:00 a.m.				
11:00 a.m.				
Noon	Lunch in Vine 2			
1:00 p.m.	Acyclica	Econolite Cobalt (cont.)	Pelco Intellicross	
2:00 p.m.			Trafficware Pod	
3:00 p.m.				
4:00 p.m.				

### WORKSHOP: PROFESSIONAL ENGINEERING EXAM PREPARATION

*Wednesday, 9:00 a.m. – 4:00 p.m.*

This workshop will provide an overview of transportation engineering for the NCEES Professional Engineering Exam. The day course will be based on the latest NCEES exam standards for transportation engineering which were recently revised for the Spring 2016 exam. The course will include a review of horizontal and vertical curves, horizontal sightline offset, acceleration/deceleration, vertical clearance, highway capacity, speed, volume, and sight distance. Exam strategies will be discussed and example problems will be provided and worked in class.

Instructors: Mark Ingram and Gabriela Tassin, Cobb, Fendley & Associates



### NETWORKING: FISHING TOURNAMENT

*Wednesday, 5:30 a.m. – 1:00 p.m.*

And now for something completely different. We will be having the first-ever fishing tournament on Galveston Bay. The tournament will be a guided fishing tournament beginning and ending at the Marina at Moody Gardens.

*Boats will be leaving the yacht basin at 6:00 a.m. and all participants must be signed and at their boats by 5:30 a.m.* Breakfast and lunch will be provided for each participant as well as drinks and snacks on the boats. Awards will include Biggest Trout, Biggest Redfish, Biggest Flounder, Most Fish in the Cooler per boat, Least Fish in the Cooler per boat, and Biggest Hard Head. Many great door prizes will also be handed out during lunch and after the award ceremony.

## PROGRAM HIGHLIGHTS

### TECHNICAL TOURS: U.S. COAST GUARD TRAFFIC OPERATIONS CENTER

*Thursday, 1:00 p.m. – 4:00 p.m.*

Join us for a tour of the United States Coast Guard's Regional Maritime Traffic Operations Center. Tour participants will visit the center to see how the Coast Guard manages their operations in the greater Gulf Coast Region. The tour will include visiting the traffic operations center and a hearing a talk from TOC personnel.

The cost of the tour is \$20 and is limited to 20 people. Transportation will be provided from the conference hotel. The bus will leave Moody Gardens Hotel promptly at 1:00 p.m. *Tour participants must be a U.S. citizen or green card holder.*

### TECHNICAL TOURS: GALVESTON FERRY

*Thursday, 1:30 p.m. – 4:00 p.m.*

The Galveston-Port Bolivar ferry takes travelers on SH 87 between Galveston Island and the Bolivar Peninsula. One vessel is in operation 24 hours per day with a second vessel starting at 6:30 a.m. until traffic decreases. Learn about the operations and what it takes to carry traffic as efficiently and safely as possible.

The cost of the tour is \$10 and is limited to 20 people. Transportation will be provided from the conference hotel.

### TECHNICAL TOURS: PORT OF GALVESTON

*Thursday, 1:30 p.m. – 4:00 p.m.*

What began as not much more than a trading post in 1825 has grown to over 850 acres of port facilities today. Established by a proclamation issued by the Congress of Mexico on October 17, 1825, while the land known as Texas still belonged to Mexico, the Port of Galveston became the oldest port in the Gulf of Mexico west of New Orleans.

The cost of the tour is \$10 and is limited to 15 people. Transportation will be provided from the conference hotel. The bus will leave Moody Gardens Hotel promptly at 1:30 p.m.

### TECHNICAL TOURS: BICYCLE TOUR

*Thursday, 1:30 p.m. – 4:00 p.m.*

Join us for a fun sight-seeing bike ride around the island! The ride will be at a casual pace suitable for riders of all levels. Feel free to bring your own bike, or if you'd rather leave it at home then bicycles will also be available for rent. You can expect a comfortable route that involves beaches, historic districts, Victorian homes, and, of course, bicycle-friendly streets!

The cost to rent a bicycle is \$20 (no charge if you bring your own) and is limited to 20 people. Transportation will be provided to and from the starting location.

### NETWORKING EVENT: TEXAS HOLD 'EM TOURNAMENT

*Wednesday, 8:00 p.m. – Midnight*

TextTE will be hosting a Texas Hold 'Em Tournament on Wednesday evening following the Highway Products Group reception.

Join in the game for fun and prizes. No experience necessary.

### WORKSHOP: ETHICS SEMINAR

*Wednesday, 5:00 p.m. – 6:00 p.m.*

This session will meet the requirements of the Texas Board of Professional Engineers for ethics training. The workshop is free.

Instructors: Ron Lemons and Stephanie Buckingham, Freese & Nichols

### NETWORKING EVENTS: HIGHWAY PRODUCTS GROUP RECEPTION AND EXHIBITS

*Wednesday, 6:00 p.m. – 8:00 p.m.*

Kick things off on Wednesday evening by visiting with your colleagues at the Highway Products Group reception and exhibits. Take a look at the latest innovations in signal equipment, pavement markings, signing, lighting, and much, much more. Food, drinks and door prizes! Exhibits will also be open Thursday morning.

## PROGRAM HIGHLIGHTS



### KEYNOTE SPEAKER: Roger Guenther, Port of Houston Authority Thursday, Noon – 1:15 p.m.

Roger Guenther was named the Executive Director of the Port of Houston Authority in January 2014. With 27 years of experience at the Port Authority, Guenther brings operational leadership and a proven track record to the position. Previously, he served as Deputy Executive Director of Operations and was responsible for all container and breakbulk cargo operations, management and construction of capital development projects, facility and asset maintenance, and real estate interests. He has also served in various capacities related to facilities management, including master planning of the Bayport Container Terminal, redevelopment of the existing Barbours Cut Terminal, and procurement of all container handling cranes and equipment over the last two decades.

Mr. Guenther currently serves on TxDOT's Texas Freight Advisory Committee and Port Authority Advisory Committee, and is a member of the Board of Visitors of Texas A&M University at Galveston and Texas A&M Transportation Institute (TTI) Advisory Council.



1877 Tall Ship ELISSA Source: galvestonhistory.org

### NETWORKING EVENT: THURSDAY NIGHT SOCIAL

Thursday, 6:00 p.m. – 9:00 p.m.

Join us for our Thursday Night Social at the 1877 tall ship Elissa docked on Galveston's historic waterfront. Located at the Texas Seaport Museum, we will be able to explore the decks of this floating national historic landmark which has also been designated one of America's Treasures by the National Trust for Historic Preservation. We will have access to the galleries, officers' quarters, and galley, as well as the museum's pier. Shuttle buses will transport guests to and from Moody Gardens.

### NETWORKING YOUNGER MEMBERS EVENT: THURSDAY LATE-NIGHT SOCIAL Thursday, 9:00 p.m. – Midnight

After the Thursday Night Social at the tall ship Elissa, take a short walk and meet us at Brew Brothers Brew Pub and enjoy a huge selection of craft beers and late night snacks. Brew Brothers is located in Galveston's Historic Strand area. It was recently voted "Best Bar to Visit on Galveston Island". There will be a continuous shuttle bus running from Brews Brothers to the hotel.



1877 Tall Ship ELISSA Source: galvestonhistory.org

## HIGHWAY PRODUCTS GROUP EXHIBITORS AND MAIN FLOOR MAP



COMPANY	BOOTH	COMPANY	BOOTH
3M	40	MoboTrex	10 and 11
All Traffic Solutions	7	N-Line Traffic Maintenance	4
Ameron Pole Products	25	Paradigm Traffic Systems	19 and 20
Caliper Corporation	33	Pexco, LLC	32
C J Hensch & Associates, Inc.	35	PTV Group	30
Consolidated Traffic Controls, Inc.	9	Quality Counts, LLC	21
Control Technologies, Inc.	12	Sensys Networks	16
Dynamic Vision	17	Siemens Industry, Inc./RUGGEDCOM	29
ELTEC	5	Sky Bracket	24
Encom Wireless	06	Southwestern Section IMSA	26
EtherWAN Systems, Inc.	18	TAPCO	34
Falcon Electric	23	TechOne Sales, LLC	22
GRIDSMART	01	Texas Highway Products	13 and 14
Intuicom, Inc.	41	TOMAR Electronics Inc.	15
Iteris Inc.	02	Trafficware Group, Inc.	03
ITS Plus, Inc.	36	TransCore	28
K&K Systems, Inc.	31	Twincrest Technologies	42
Leotek USA, LLC	37	Valmont Industries	8
McCain, Inc.	39	Wireless Technology, Inc	27
Miovision	38		



## PROFESSIONAL DEVELOPMENT HOURS

According to the Texas Board of Professional Engineers (TBPE), 15 professional development hours (PDHs) are required each year for license renewal. A PDH is defined as a contact/clock hour on any qualifying course or activity with a clear purpose and objective to maintain, improve or expand the skills and knowledge relevant to the license holder's engineering field. Courses, presentations or activities related to engineering in a technical, managerial or ethical manner count toward PDHs.

There are two basic criteria for an activity to count:

1. Is the specific activity on the list of activities in the rule? (see the TBPE website for an excerpt from the rule)
2. Is the activity relevant to the practice of a technical profession and does it include technical, ethical, or managerial content?

The board wants the reporting process to be as simple as possible, and consequently, there are only two things that a license holder needs to do:

1. Certify on the renewal statement that you have completed the Continuing Education Program (CEP) requirement and return it with your renewal payment. This is the main document that the board reviews and keeps as a record of completing the CEP requirement.
2. Keep some sort of paper proof of your activity. We recommend that you retain a copy of the program along with any presentations you attended.

For additional information, access the TBPE website at [http://engineers.texas.gov/CEP\\_info.htm](http://engineers.texas.gov/CEP_info.htm)



## NOTES



# Thank You

TexITE would like to gratefully acknowledge the generous support of our sponsors for the 2016 TexITE Meeting.

## Platinum Sponsors

Arcadis US Inc.  
C J Hensch & Associates, Inc.  
Kimley-Horn and Associates, Inc.  
Midtown Engineers

## Gold Sponsors

HDR Engineering, Inc.  
Terra Associates, Inc.  
WSP | Parsons Brinkerhoff

## Silver Sponsors

AIA Engineers, Ltd.  
Brown & Gay Engineers, Inc.  
EPIC Transportation Group, LP  
McDonough Engineering Corporation  
RPS Klotz Associates  
Texas Highway Products  
Trafficware  
Walter P Moore



The Texas District of the Institute of Transportation Engineers (TexITE) is a professional organization for individuals in the transportation field that reside in the state of Texas, although membership is not limited to Texas professionals, who strive to help

Texans provide a safer, cleaner and more convenient and efficient transportation system.

**For more details visit [texite.org](http://texite.org).**

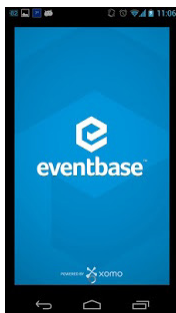


Follow us on **Twitter @TexITE**.  
If you are tweeting from the meeting,  
please use the hashtag **#TexITEConf**.



Find us on  
**Facebook**

You can also like  
us on Facebook  
at **[facebook.com/TexasITE](https://facebook.com/TexasITE)**.



To access the meeting schedule,  
go to the App Store or Google Play  
and download **Eventbase** for free.  
**Search "TexITE"** to have full access  
to all of the meeting's events.

