

*great*  
**ourregion**  
**2040**

TexITE 2014  
Spring Meeting



**Jeff Taebel, FAICP**

Houston-Galveston Area Council

# Mobility Challenges

**Sustained Growth**



**Unsustainable Funding**



# Addressing Mobility Challenges

**Building Roads**

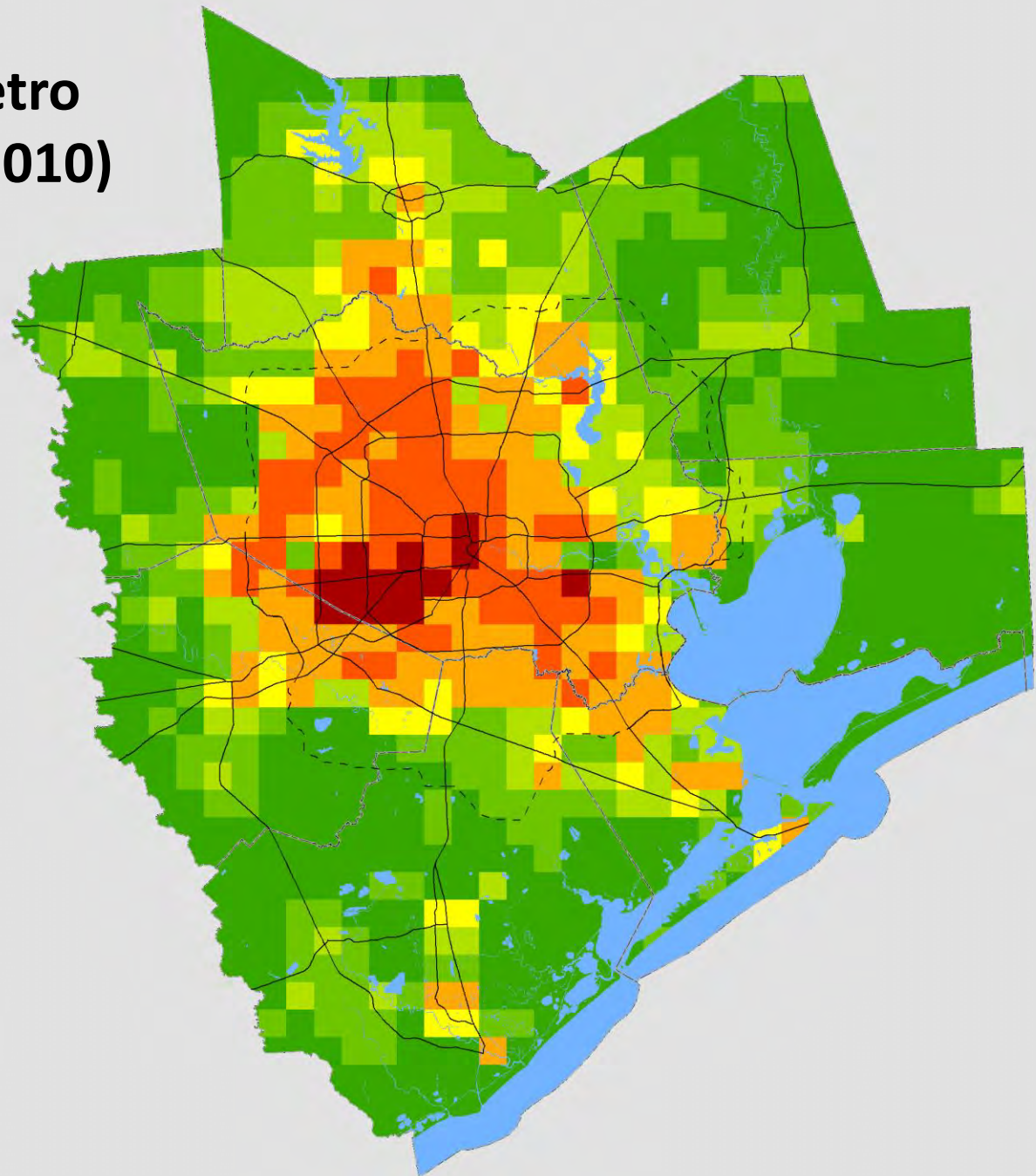


**Building Community**

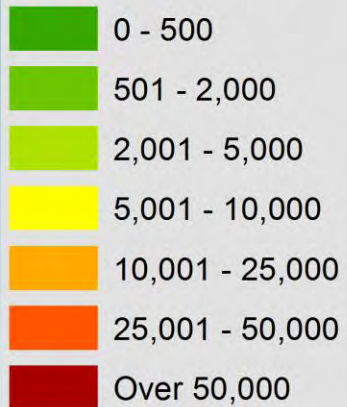




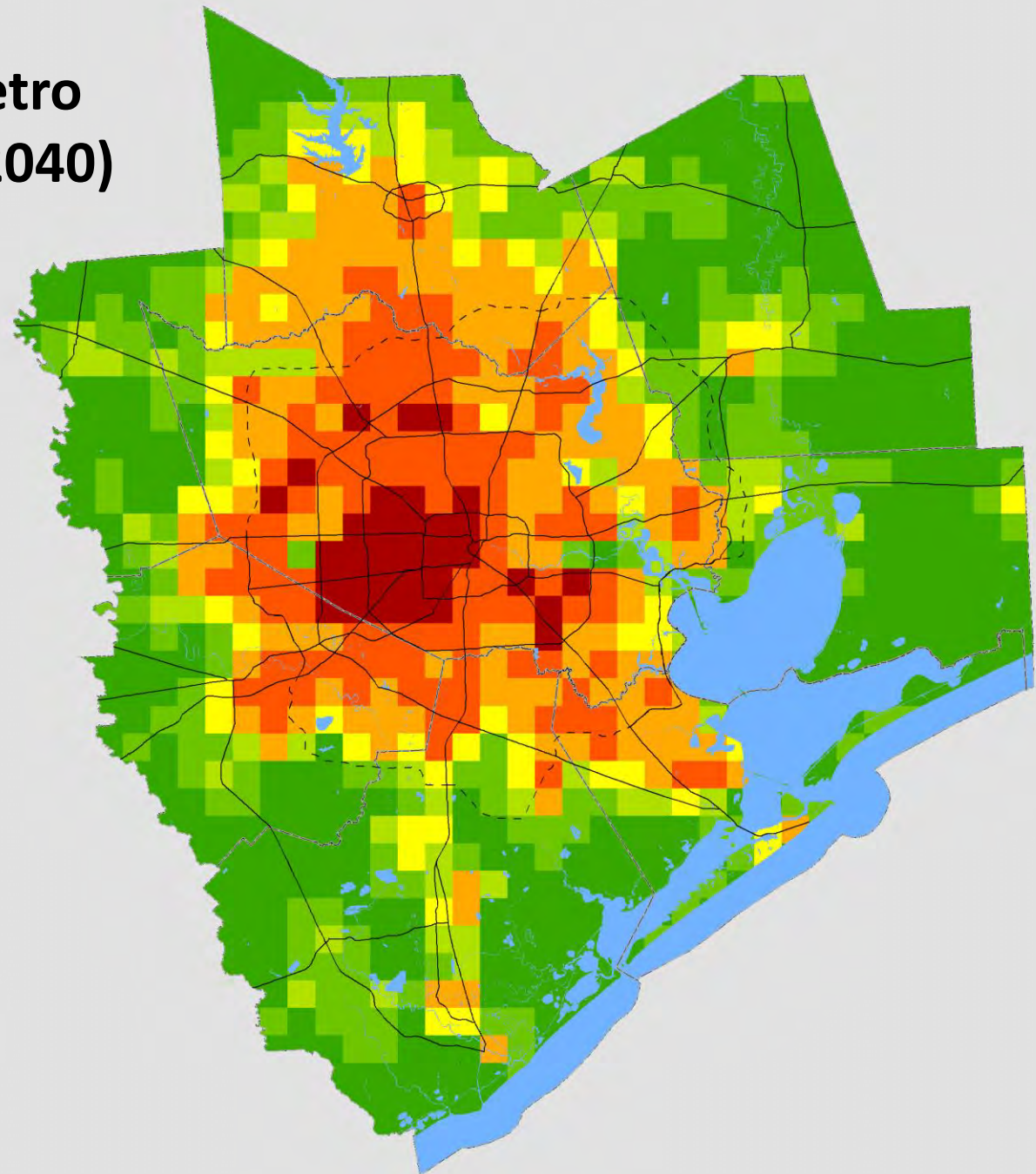
# Houston Metro Population (2010)



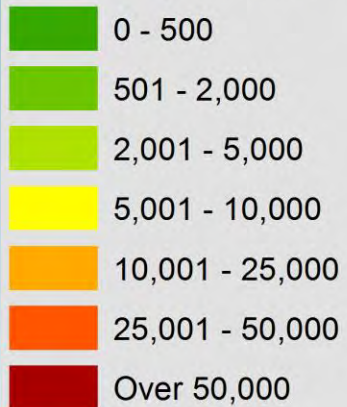
## 2010 Population



# Houston Metro Population (2040)

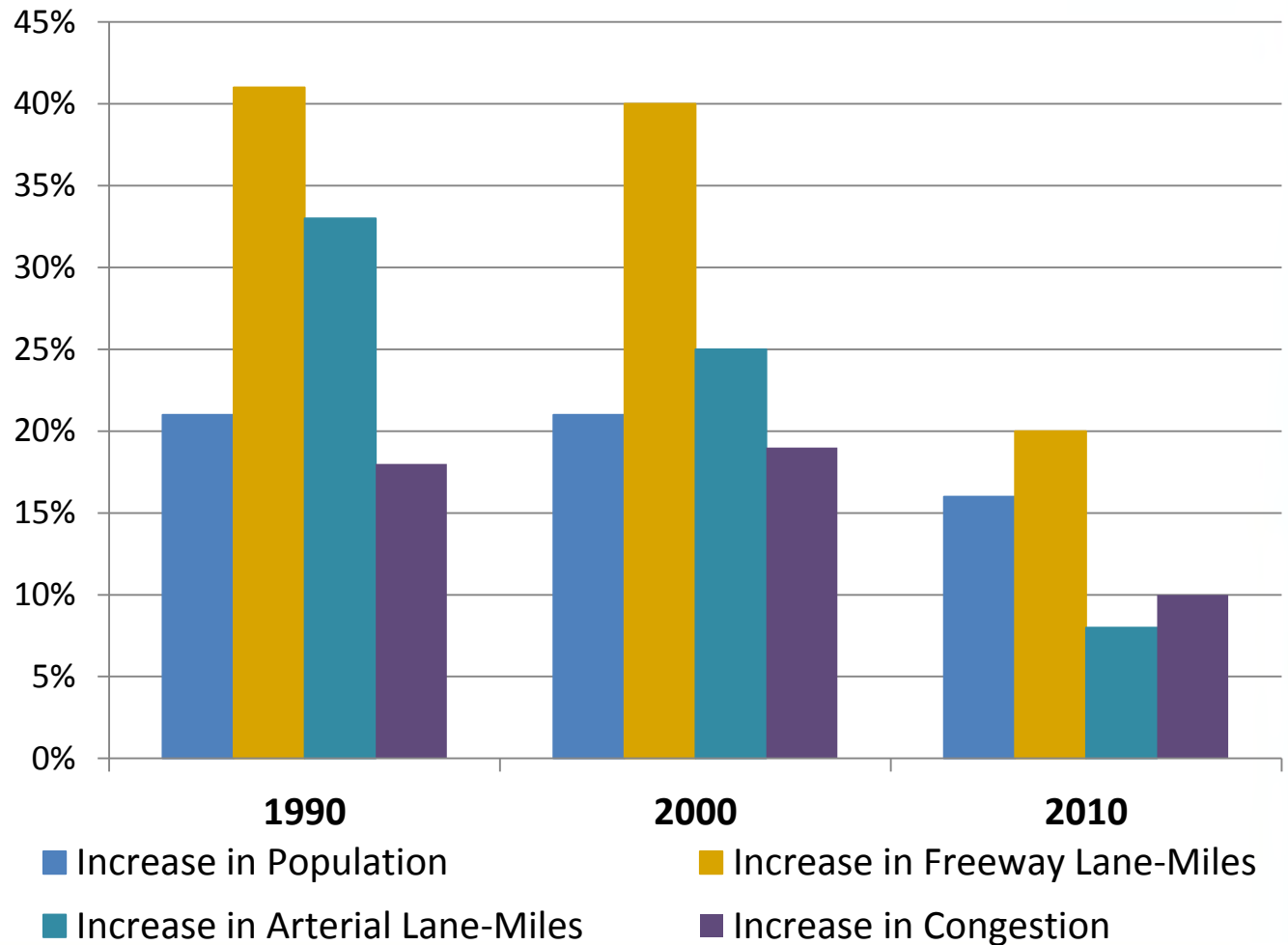
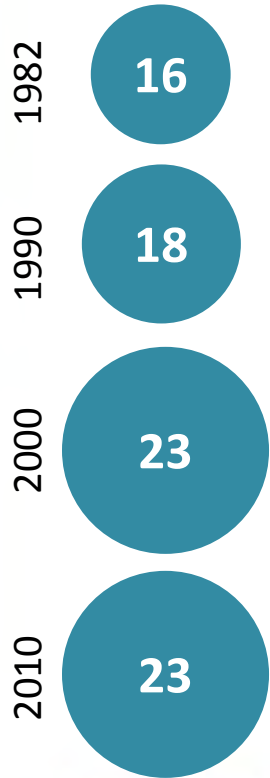


## 2040 Population



# Growth & Congestion

## Per Capita VMT





# Our Great Region 2040

*...a plan to ensure our region is as good or better a place to live, work, and prosper in 2040 than it is today*



# Big Ideas



Economic Development



Environment



Healthy Communities



Housing



Transportation



Resiliency



# THINK 2040 Survey



# Survey Responses

**From where you live, how difficult or easy is it/will it be for you to get to the places you want to go?**

	Today	In 2040
Difficult	22%	73%
Not That Difficult	46%	14%
Easy	32%	13%

# Survey Responses

**What makes it difficult for you to get to the places you want to go?**

I have to drive in congested conditions	86%
I have to drive long distances	46%
Transit options are limited or unavailable	46%
There is a lack of sidewalks and/or bicycle paths	27%



# Survey Responses

From where you live, how much time does it usually take for you to reach...

	Work	School	Shopping	Place of Worship	Park or Natural Area	Bus or Light Rail Stop	Entertainment or Dining
< 10 min	18%	32%	40%	35%	54%	40%	36%
10 to 30 mins	35%	19%	51%	35%	33%	21%	50%
30 to 45 mins	19%	3%	8%	6%	7%	7%	10%
45 to 60 mins	12%	1%	1%	2%	2%	3%	3%
>60 mins	6%	1%	0%	0%	1%	2%	0%

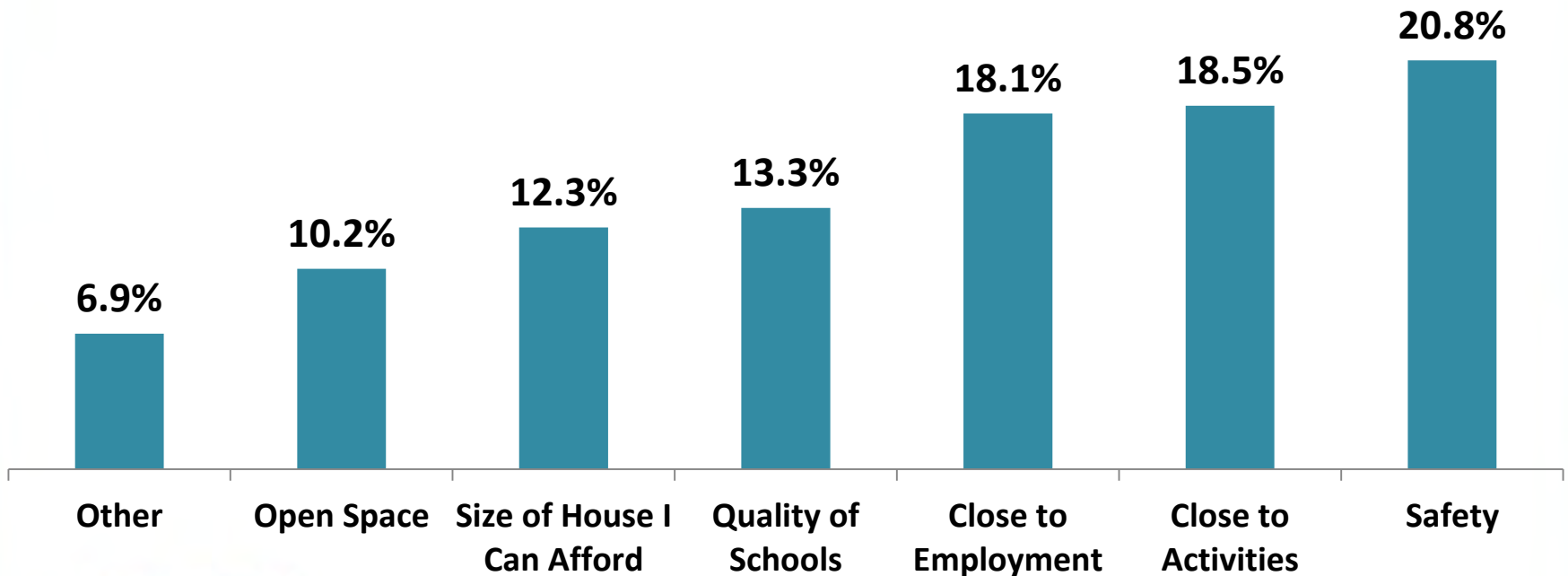
# Survey Responses

From where you live, how much time does it usually take for you to reach...

	Work	School	Shopping	Place of Worship	Park or Natural Area	Bus or Light Rail Stop	Entertainment or Dining
< 10 min	18%	32%	40%	35%	54%	40%	36%
10 to 30 mins	35%	19%	51%	35%	33%	21%	50%
30 to 45 mins	19%	3%	8%	6%	7%	7%	10%
45 to 60 mins	12%	1%	1%	2%	2%	3%	3%
>60 mins	6%	1%	0%	0%	1%	2%	0%

# Survey Responses

If you could live anywhere in the region, which of the following would be the most important factor in your decision?





# Age Variations

If you could live anywhere in the region, which of the following would be the most important factor in your decision?

**Choice:** Close to Activities (Walking/Bicycling Distance)

Under 35 years	35 to 44 years	45 to 54 years	55 to 64 years	65 years and older
30.6%	14.8%	14.8%	17.8%	19.2%

# Age Variations

If you could live anywhere in the region, which of the following would be the most important factor in your decision?

## Choice: Quality of Schools

Under 35 years	35 to 44 years	45 to 54 years	55 to 64 years	65 years and older
13.1%	29.1%	15.8%	5.4%	3.9%



# Transportation

**To be a great region in 2040,  
we should achieve a world-class  
transportation network**





# Transportation Strategies

Improve the efficiency of freight movement by investing in projects that improve connections between ships, trains, and trucks.

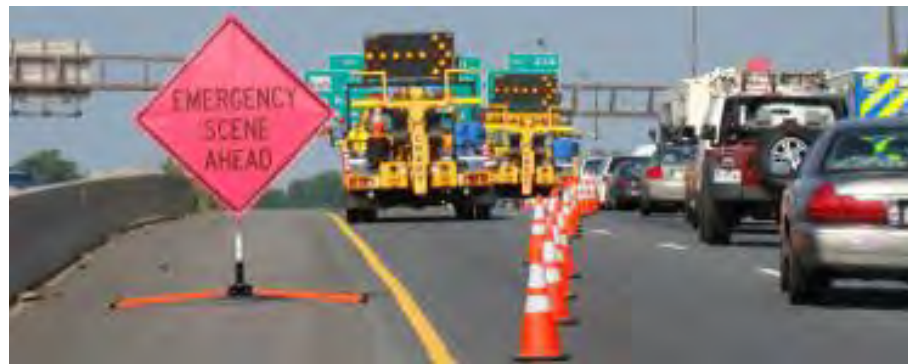


Barbour's Cut: Houston Ship Channel



# Transportation Strategies

Optimize existing transportation network through a 'Fix it First' strategy by using technology and improved incident management to maximize system capacity.



Incident Management  
Source: MATOC



# Transportation Strategies

Include economic, safety, and quality of life costs and benefits of transportation projects in funding prioritizations.



Shared-Use Path in La Porte  
Source: City of La Porte





# Transportation Strategies

Create a regional framework for expanding transit across Our Region.



METRO Rail  
Source: Jackson Myers



# Transportation Strategies

Provide counties with tools to better coordinate land use and transportation planning in unincorporated areas.



FM 1960 in Northern Harris County  
Source: Houston Chronicle



# Transportation Strategies

Develop and implement policies to improve transit, pedestrian, and bicycle access between and within activity centers, connecting residents to job centers.



Midtown Houston



# Transportation Strategies

*Improve the efficiency of freight movement by investing in projects that improve connections between ships, trains, and trucks.*

*Optimize existing transportation network through a 'Fix it First' strategy by using technology and improved incident management to maximize system capacity.*

*Create a regional framework for expanding transit across Our Region.*

## Type(s)



Policy



Program



Policy



Program



Partnership

## Implementers

Federal Agencies • State Agencies • Counties • Cities • Port Authorities • Railroad Companies

Metropolitan Planning Organization • State Agencies • Counties • Cities

Metropolitan Planning Organization • State Agencies • Counties • Cities

## Implementation Tools

Funding for Intermodal Connections

Transportation Improvement Plans • Condition Inventories • Infrastructure Asset Management Systems • Transportation Planning Capacity • Building Peer Program • Programmatic Agreements • 3D Modeling for Construction • Means and Methods • Intelligent Compaction • Accelerated Bridge Construction • Design Build • Geospatial Data Collaboration

Creation of a Regional Transportation Authority

## Possible Funding Sources

America's Marine Highway Program • Congestion Mitigation & Air Quality Improvement (CMAQ) Program • Transportation Infrastructure Finance & Innovation Act (TIFIA) Program

Local Technical Assistance Program (LTAP) • Metropolitan Planning Program and State Planning and Research Program • FHWA Transportation, Community and System Preservation Program • FHWA Every Day Counts Initiative

Sales Tax Revenue • Bonds

## Cost

\$\$\$

\$\$\$

\$\$ - \$\$\$

## Ease of Implementation

Moderate

Moderate

Moderate - Difficult

## Model Policies/ Helpful Programs

Houston Region Freight Rail Study • H-GAC Regional Goods Movement Plan • Chicago Region Environmental and Transportation Efficiency (CREATE) Program • Waterville Intermodal Facility (Waterville, ME) • Columbia Slough Intermodal Expansion Project (Portland, OR)

City of Houston Consolidated Transportation Plan • City of Houston GIMS • Delaware Department of Transportation INFORM (Information Network for Online Resource Mapping) • Oklahoma Department of Transportation GRIP (Geographic Resource Intranet Portal) • Florida DOT Efficient Transportation Decision Making Process • Utah DOT Planning Network

Chicago Regional Transportation Authority



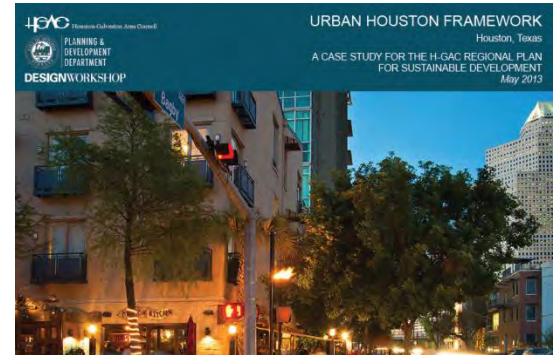


# Implementation

Coordinated Planning

Think “Outside the Curb”

Local Funding Sources



SYSTEM REIMAGINING



Our Region,  
A **Great** Region

**[www.ourregion.org](http://www.ourregion.org)**

## **JEFF TAEBEL, FAICP**

Director of Community & Environmental Planning

Houston-Galveston Area Council

[jtaebel@h-gac.com](mailto:jtaebel@h-gac.com)