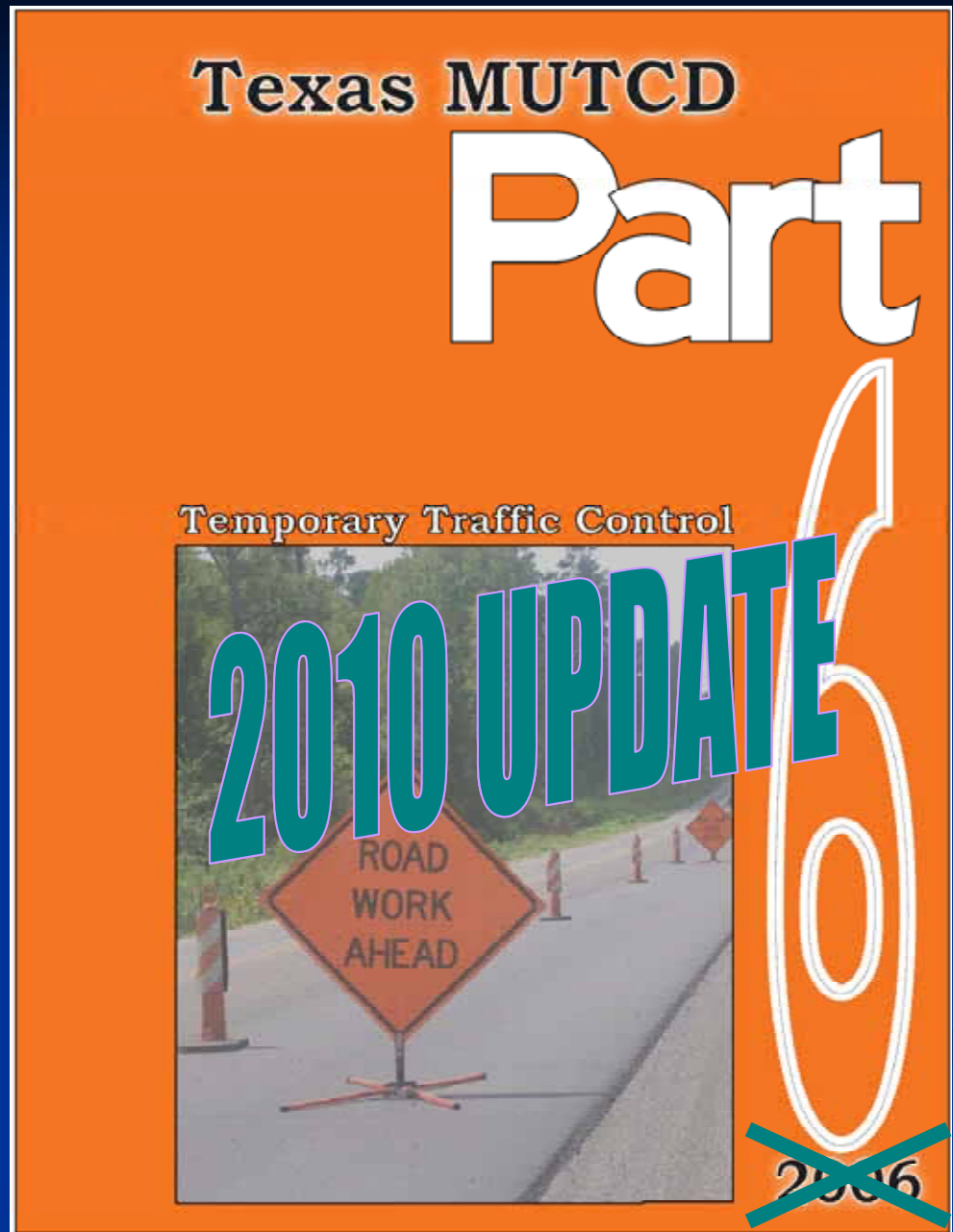


Anticipated Changes  
Based on 2009  
Federal MUTCD



# Section 1A.13 – Meanings of text headings (Standard, Guidance, Option, Support) relocated and clarified

- Standard statements **shall not be modified or compromised** based on engineering judgment or engineering study

## Section 1A.13 Definitions of Headings, Words, and Phrases in this Manual

### Standard:

- 01 When used in this Manual, the text headings of Standard, Guidance, Option, and Support shall be defined as follows:

- A. **Standard**—a statement of required, mandatory, or specifically prohibitive practice regarding a traffic control device. All Standard statements are labeled, and the text appears in bold type. The verb “shall” is typically used. The verbs “should” and “may” are not used in Standard statements. Standard statements are sometimes modified by Options. Standard statements shall not be modified or compromised based on engineering judgment or engineering study.
- B. **Guidance**—a statement of recommended, but not mandatory, practice in typical situations, with deviations allowed if engineering judgment or engineering study indicates the deviation to be appropriate. All Guidance statements are labeled, and the text appears in unbold type. The verb

# Chapter 6A. General

- Adds “Standard” language – “all road users” includes those on private roads open to public travel.

# Minimum length for one-lane, two-way traffic taper added to Table 6C-3

Type of Taper	Taper Length
Merging Taper	at least L
Shifting Taper	at least 0.5 L
Shoulder Taper	at least 0.33 L
One-Lane, Two-Way Traffic Taper	50 feet minimum 100 feet maximum
Downstream Taper	100 feet per lane

# Section 6C.13 Pilot Car Method of One-Lane, Two-way Traffic Control

Relocated Standard :

A flagger shall be stationed on the approach to the activity area to control vehicular traffic until the pilot vehicle is available



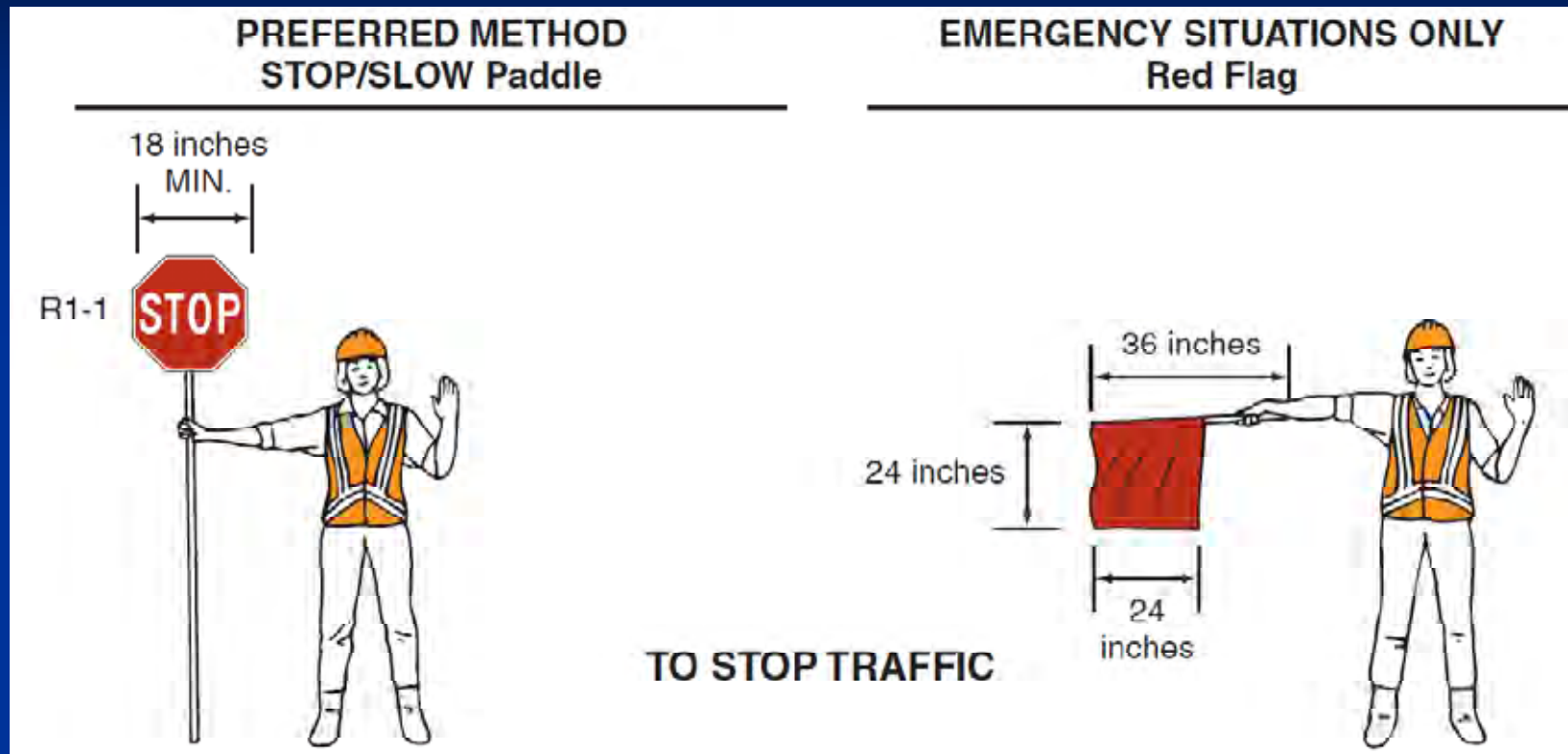
# Section 6D.03 Worker Safety Considerations



## High Visibility Safety Apparel

- Required for all workers within the public right of way
- Applies to all roads, not just those on the Federal-aid system
- Option for law enforcement and first responders to use new ANSI “public safety vests”
- Firefighters and law enforcement are exempted from the requirement under certain conditions

# Chapter 6E. Flagger Control

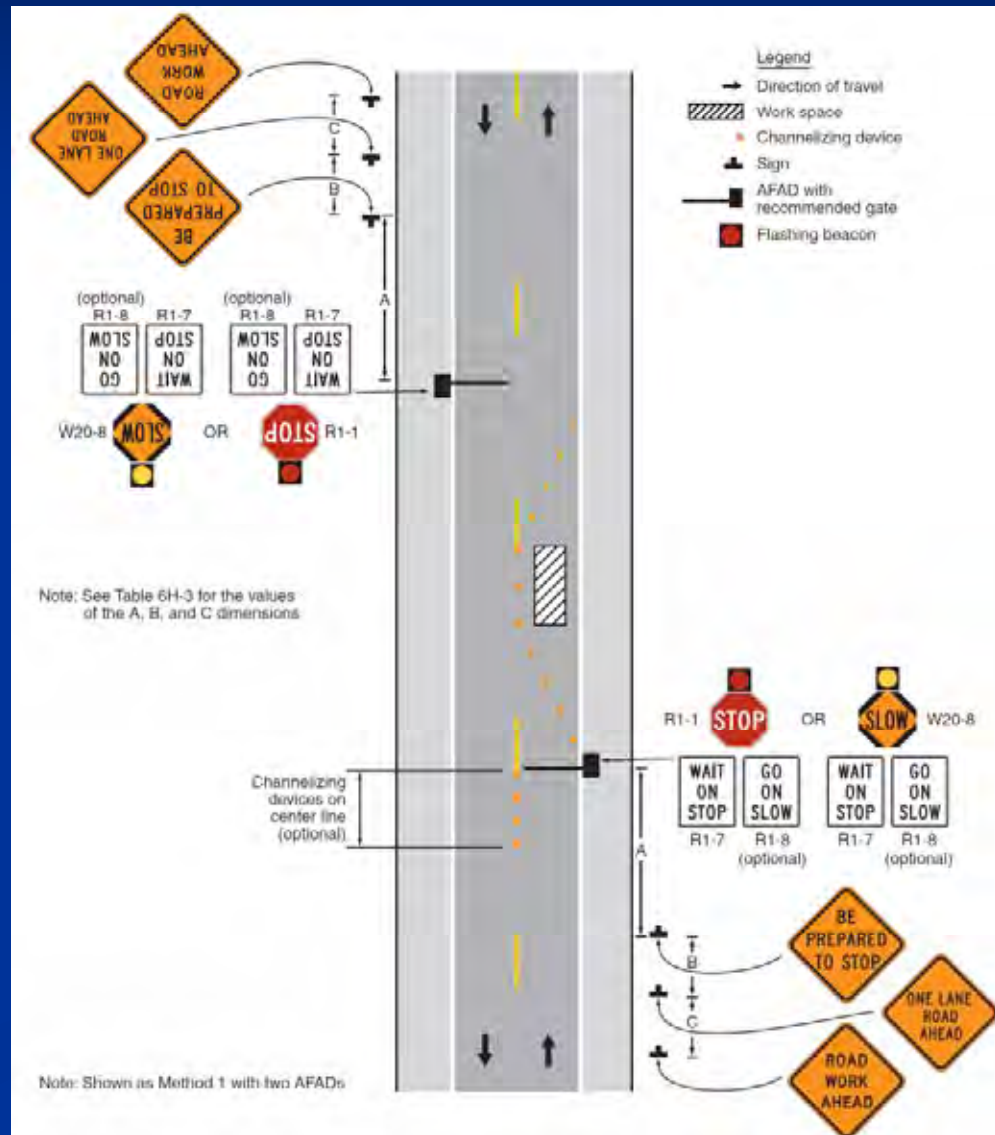


Revised "Standard" – Flaggers shall use a STOP/SLOW paddle, a flag, or an Automated Flagger Assistance Device (AFAD) to control road users approaching a TTC zone.

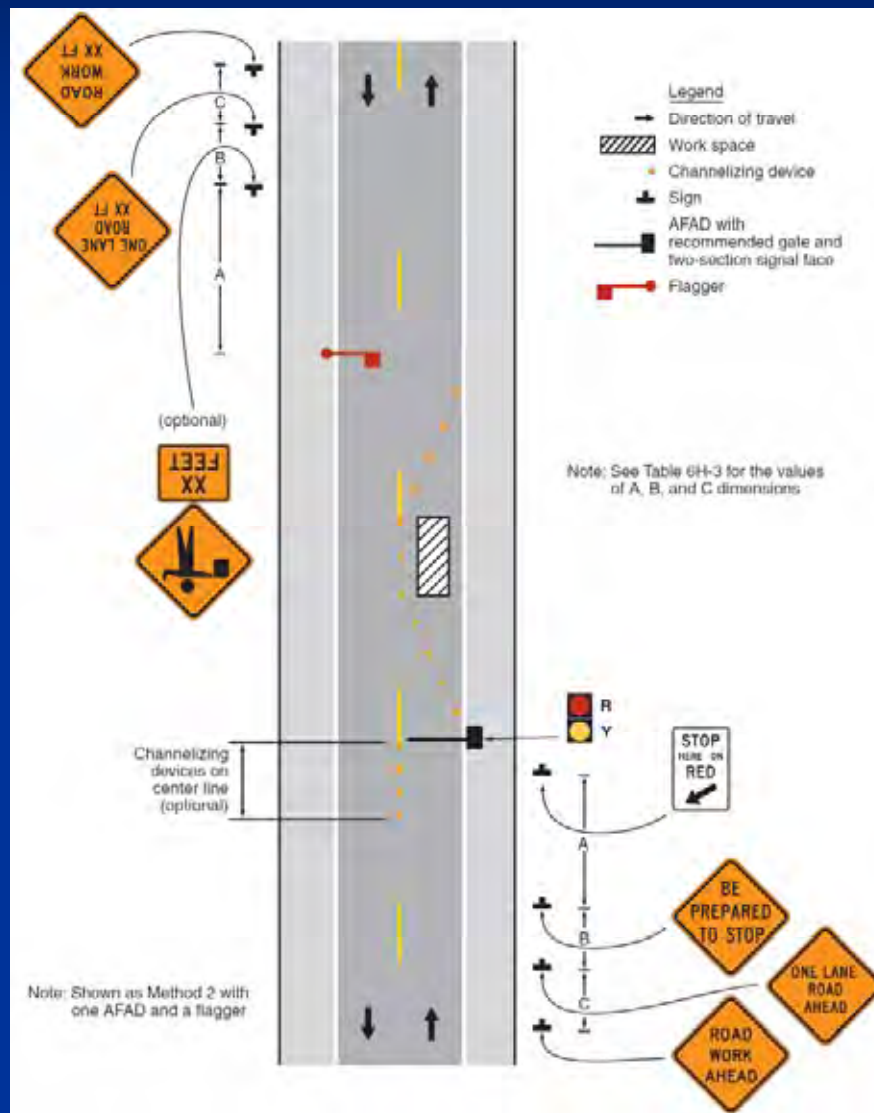
# Chapter 6E. Flagger Control

## Two Types of AFADs

### Type 1: STOP/SLOW paddle AFAD



# Chapter 6E. Flagger Control



**Type 2:  
Red/yellow  
lens AFAD**

# Chapter 6E. Flagger Control

Red/Yellow lens AFAD  
Shall include a gate  
arm that descends  
down on red phase.



# Table 6F-1. TTC Zone Sign and Plaque Sizes

- This Table has been expanded to provide much more information
- New “Standard” – minimum size is only for local roads less than 35 MPH

**Table 6F-1. Temporary Traffic Control Zone Sign and Plaque Sizes (Sheet 3 of 3)**

Sign or Plaque	Sign Designation	Section	Conventional Road	Freeway or Expressway	Minimum
Detour (with distance)	W20-2	6F.19	36 x 36	48 x 48	30 x 30
Road (Street) Closed (with distance)	W20-3	6F.20	36 x 36	48 x 48	30 x 30
One Lane Road (with distance)	W20-4	6F.21	36 x 36	48 x 48	30 x 30
Lane(s) Closed (with distance)	W20-5,5a	6F.22	36 x 36	48 x 48	30 x 30
Flagger (symbol)	W20-7	6F.31	36 x 36	48 x 48	30 x 30
Flagger	W20-7a	6F.31	36 x 36	48 x 48	30 x 30
Slow (on Stop/Slow Paddle)	W20-8	6E.03	18 x 18	—	—
Workers	W21-1,1a	6F.33	36 x 36	48 x 48	30 x 30
Fresh Oil (Tar)	W21-2	6F.34	36 x 36	48 x 48	30 x 30
Road Machinery Ahead	W21-3	6F.35	36 x 36	48 x 48	30 x 30

# Section 6F.12 New Guidance and Options for Higher Fines Signs

G20-5aP



R2-1



R2-6aP



BEGIN  
HIGHER  
FINES  
ZONE

R2-10

END  
HIGHER  
FINES  
ZONE

R2-11

END  
WORK  
ZONE  
SPEED  
LIMIT

R2-12

# Section 6F.44 Shoulder Drop Off Symbol Sign



W8-17



W8-17P

**New symbol sign  
replaces text  
sign, plaque is  
optional**

# Section 6F.48 Reverse Curve Signs

For multilane shifts, number of arrows and lanes must match or use plaque.



W1-4b

or



# Section 6F.49 Double Reverse Curve Sign

- Distance between reverse curves  $< 600$  ft
- Design speed of the curves is  $< 30$  mph



W24-1b

or



W24-1



W24-1cP

## Section 6F.60 PCMS Signs

New Standard – Legend color shall comply with  
table 2A-5

### Table 2A-5. Common Uses of Sign Colors

[illegible]

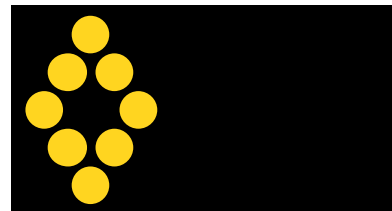
# Section 6F.60 PCMS Signs

New Standard – No messages with animation, rapid flashing, dissolving, exploding, scrolling, or traveling horizontally or vertically.



# Section 6F.61 Arrow Boards (previously Arrow Panels)

**New alternating diamond display to indicate caution on an arrow board, also called dancing diamond**



Alternating Diamond Caution

# Section 6F.66 Vertical Panels

Minimum requirement  
of 270 square inches  
of reflective material  
for freeways,  
expressways...  
removed from this  
section



8" x 24" = 192" sq.  
minimum size



8" x 34" = 272" sq.  
no longer required

# Section 6F.84 Temporary Traffic Signals



New Standard - No temporary signals within 200' of RR grade crossing without preemption, or unless uniformed officer or flagger is used

# Section 6F.87 Rumble Strips



Black and orange are acceptable colors for transverse rumble strips in TTC zones

**When will the  
Texas MUTCD be available?**

# Questions?

Michael Chacon  
mchacon@dot.state.tx.us