

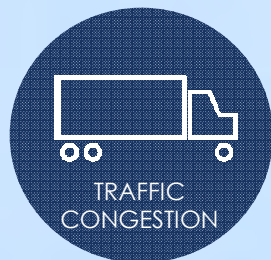
Weatherford's First Modern Roundabout

Presented by:

Caleb Milligan, PE
Project Manager
Dunaway Associates

Manny Palacios
Director of Public Works
City of Weatherford

- City of Weatherford Transportation & Public Works Department
- Growing Population
- Began Looking for Alternative Transportation Improvements
- Identified Several Locations



- Dunaway Provided an Introduction Presentation to Staff
- Project was Selected as a Pilot to Gain Public Feedback

Existing Conditions

South Bowie Drive

Mockingbird Lane

Charles Street

- Large Footprint Available
- Four-way Stop & Compliance Issues
- Peak Hour Congestion
 - >500 vph AM
 - >400 vph PM
- Neighborhood Enhancement for Surrounding Sites
 - Residential
 - Youth Baseball Fields
 - Church
 - Library
 - Elementary & Middle Schools
- Children Walking to/from Sites

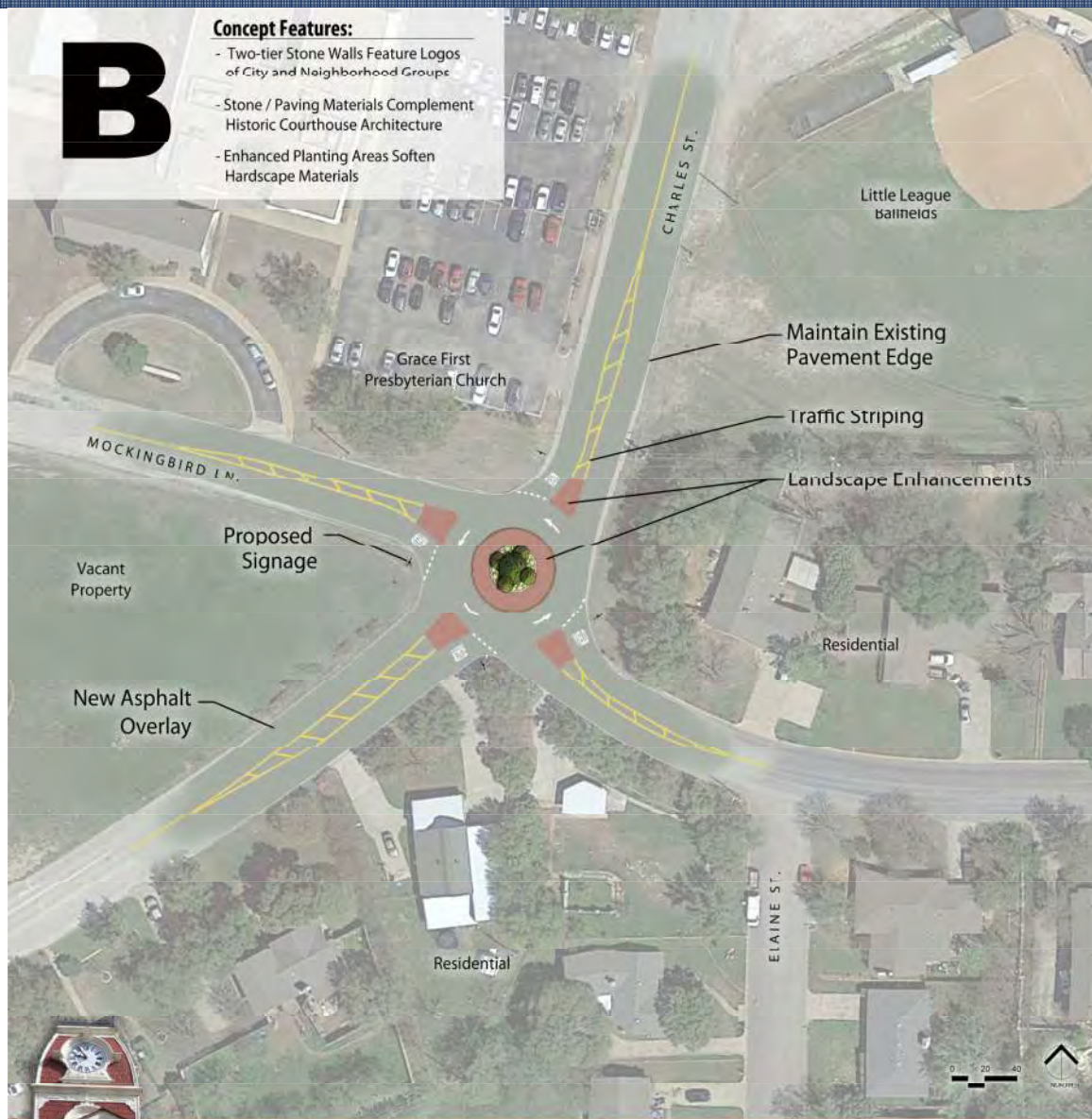
-
- ICD = 90'
- CHARLES STREET
- MOCKINGBIRD LANE
- S. BOWIE DRIVE
- ELAINE STREET
- YIELD
- YIELD
- YIELD
- YIELD
- PROPOSED LANDSCAPE AMENITY (816 SF)
- ADDITIONAL ASPHALT WIDENING (100 SF)
- EDGE LINE MARKINGS RECOMMENDED ALONG SECTIONS WITHOUT CURB.
- YIELD SIGN AT ENTRY
- WARNING SIGN ON APPROACHES
- 15 M.P.H.
- PROPOSED - FOR REVIEW ONLY. THESE DOCUMENTS ARE FOR DESIGN REVIEW AND NOT A GUARANTEE FOR CONSTRUCTION. BUILDING OR PERMIT PURPOSES. THE WORK PREPARED BY, OR UNDER THE SUPERVISION OF, A LICENSED PROFESSIONAL ENGINEER. DATE: August 2013
- DUNAWAY**
- 550 Bailey Avenue • Suite 400 • Fort Worth, Texas 76107
Tel: 817.335.1121
(TX REG. F-1114)

- Natural Tones & Stone Colors to Match Nearby Park System
- Clock face Interpretation with Boulders placed in Landscape Island
- Minimal Plantings for Maintenance & Water Use
- Stone Patterned Thermoplastic Sheets used in Splitter Islands & Truck Apron



Concept B

- Stone Colors to Match Historic Courthouse
- Stone Landscape Wall with Neighborhood Group Logos
- Enhanced Plantings to Soften Hardscape
- Red Brick Patterned Thermoplastic Sheets used in Splitter Islands & Truck Apron



City Decided to Modify the Design for Permanent Construction

- Temporary Appearance would be Unfavorable
- Public Awareness was Made
- No Significant Resistance
- Essentially “Do It” or Not at All

Permanent Construction

- Exterior Curb & Gutter
- New Full Depth Asphalt Section
- Raised Splitter Islands
- Concrete Truck Apron
- Permanent Landscape Island Including Irrigation
- Concept A Theme was Utilized























Several Positive Comments

- Overall Improvements & Appearance
- Better Traffic Flow

Minor Negative Comments

- Small, Worried About Truck & Trailers
- No Major Resistance



