

Welcome to Fort Worth!

**TexITE Fall Meeting
September 23, 2016**

Curvie Hawkins, Assistant VP, Planning



Talking Points

- About FWTA
- Master Plan
- TEX Rail





Fort Worth Transportation Authority (FWTA)

Member Cities

- ◎ Fort Worth
- ◎ Richland Hills
- ◎ Blue Mound
- ◎ Grapevine & North Richland Hills (Partners)



Mission Statement

"We will provide quality public transportation to meet the mobility needs of our region."



FWTA Transportation Services

- **Fixed Route Bus, Rider Request Service**
 - 42 Bus Routes + Arlington MAX Service
- **MITS Paratransit Service**
 - 1,200 trips per day (avg.)
- **Commuter Rail (Trinity Railway Express)**
- **Carpool and Vanpool Programs**





MORE PLACES.
MORE PEOPLE.

MORE
POSSIBILITIES.

ALLIANCE/
NORTH FORT WORTH

DFW AIRPORT/
GRAPEVINE

NEAR SOUTH SIDE/
WEST 7TH/MUSEUM DISTRICT

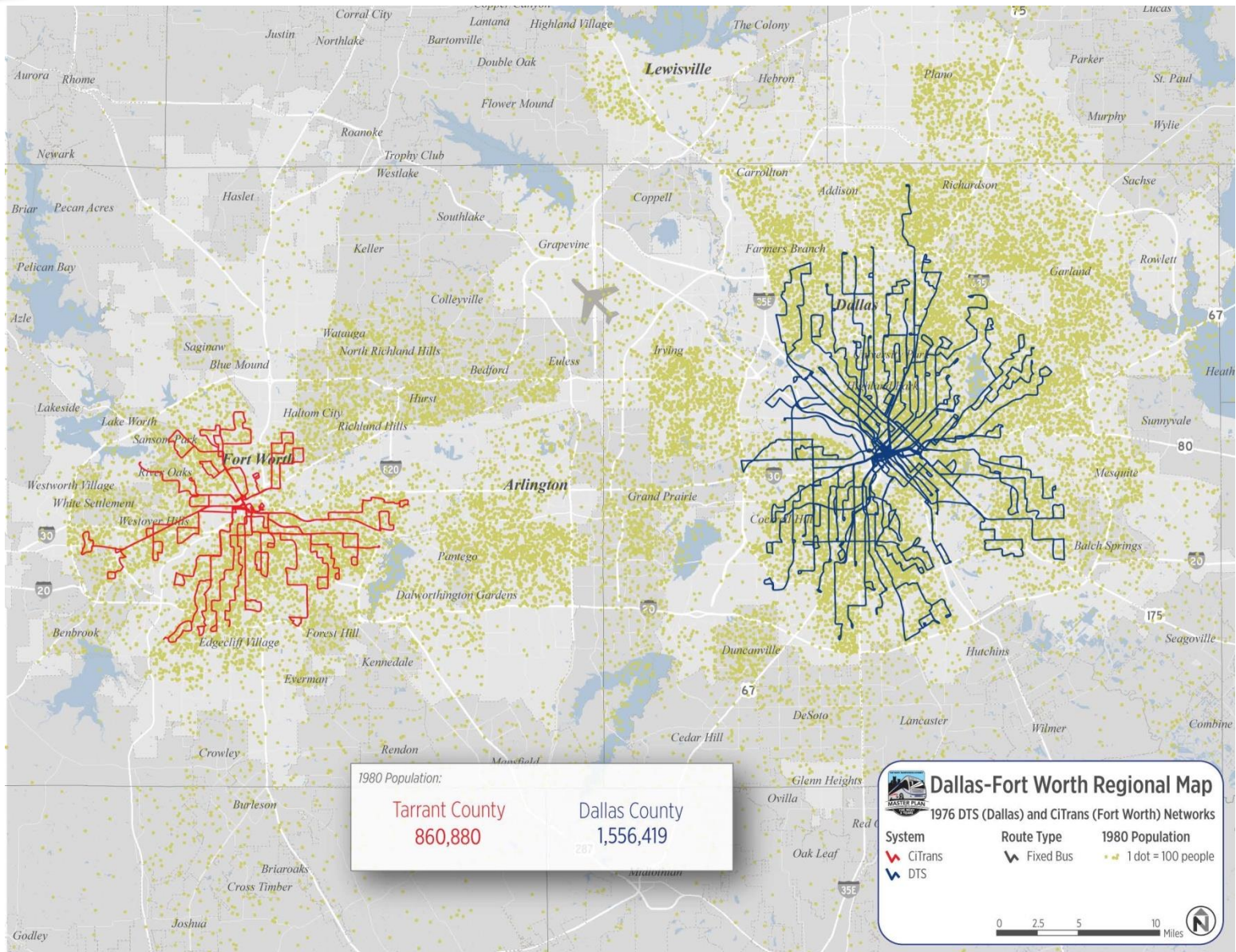
ARLINGTON

NORTH RICHLAND HILLS



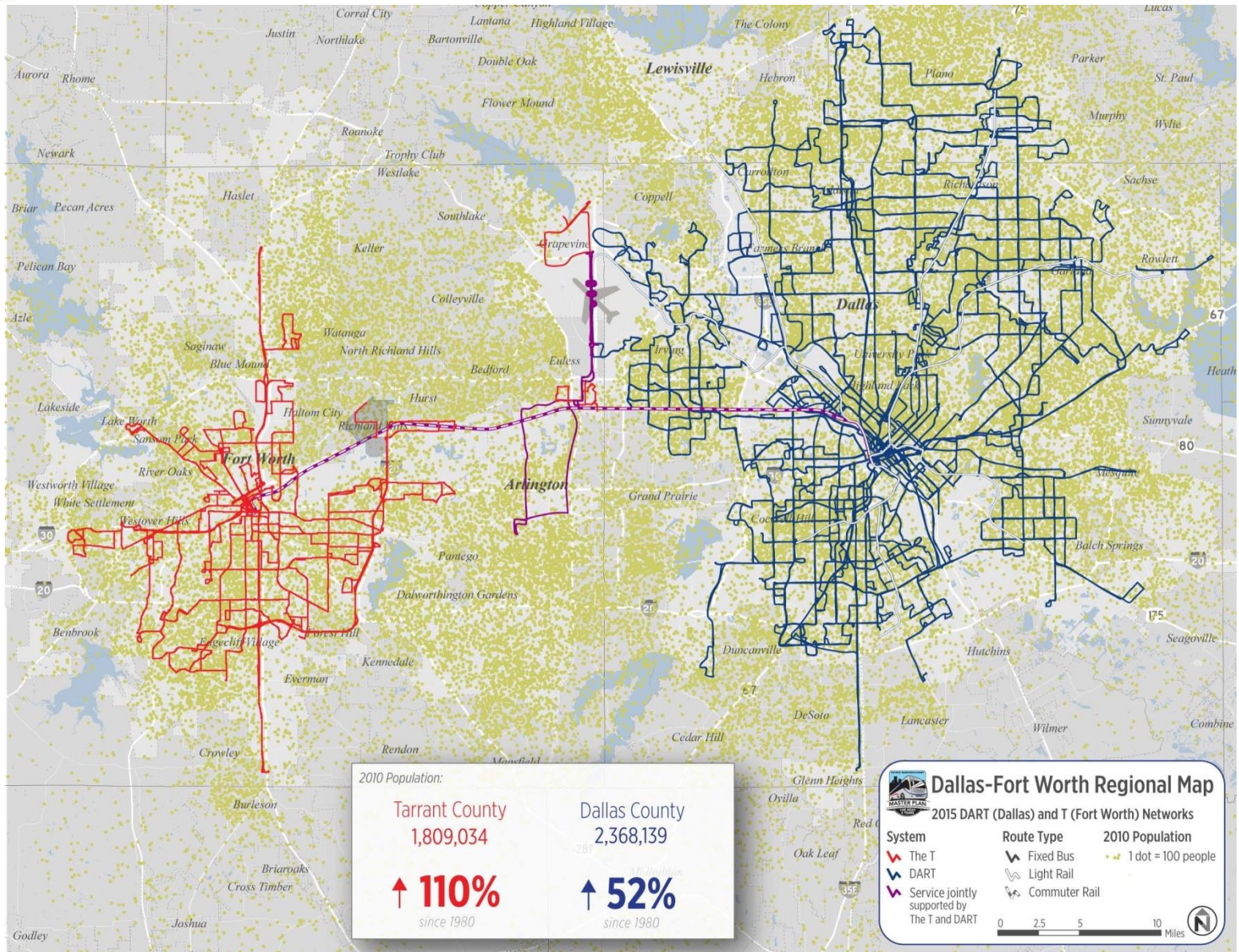
FORT WORTH TRANSPORTATION AUTHORITY

A TALE OF TWO COUNTIES: 1976





A TALE OF TWO COUNTIES: 2016



new homes in southwest Fort Worth attest to the population

U.S. CENSUS BUREAU

Tarrant posts 6th-largest gain in population in U.S.

No. 12 Von Remel added 29,437 people, Tarrant County, which was No. 17, grew by more than 25,000 people as a whole. Since 1980, the county has added 100,000 people, the census bureau said.

The nation in fastest-growing... County...

the book
The
Adrian
South
quarters in
SW part of
The Potters
district's
SW

Texas and Florida lead the nation in population growth, with Texas adding almost 2 million people now live in Tarrant County. The Lone Star State grew by almost 500,000 residents in 1990. Tarrant County's population increased by more than 36,000 people, a 10 percent jump in the decade.

Tarrant County's population increased by more than 26,000 people, the sixth-largest jump in the nation, according to data for counties released yesterday. Tarrant's population was 1.98 million, according to the Census data.

No. 1 Harris County grew by 90,451, and No. 5 Bexar County added more than 37,000. No. 9 Dallas County grew by 33,760.

Construction underway
on Facebook data center
New retail center opens
on west side of I-35W
Hillwood's Heritage
community just about
fit out

ALLIANCE CORRIDOR

In north Fort Worth, no end to strong growth is in sight

More than 13,000 houses have been built in and around the Alliance Corridor, and suitable land is being developed for more housing.

Construction underway for new office building at corner of Highway 125W and Highway 125W.

Heritage building at corner of Highway 125W and Highway 125W.



tion and data center, shopping, restaurants, apartments, schools and upscale homes, schools

the site of its new data center and office building

they must

blank

WORK ON I-35W
It's impossible to drive in north Fort Worth without seeing orange barriers, but there is a light at the end of the I-35W traffic tunnel.
The reconstruction of the interstate from Loop 201 to the U.S. 287 "De-

In Depth
Communist Bud Kennedy

Depth

Columnist Bud Kennedy has the day off; but read his Eats Beat report in DFW.com.



"WE STARTED WITH THE AIRPORT. ... IT WAS A NOVEL CONCEPT. IT STILL IS TODAY."

Bill Burton, Hillwood executive vice president

2012

July 1, 2011, to re-
S-T archives/Max Faulkner

think Texas
ur poll.



INPUT FOR THE MASTER PLAN

- Developing the Transit Master Plan to meet the region's mobility needs was a yearlong process.
- Active community involvement played a big role in the planning process.
 - 10,030 unique visitors to the website
 - 551 interactions via online Town Hall website
 - **Project Bus Rolling Town Hall**
 - 1,033 passenger surveys
 - 411 online surveys completed
 - 2 Twitter Town Halls



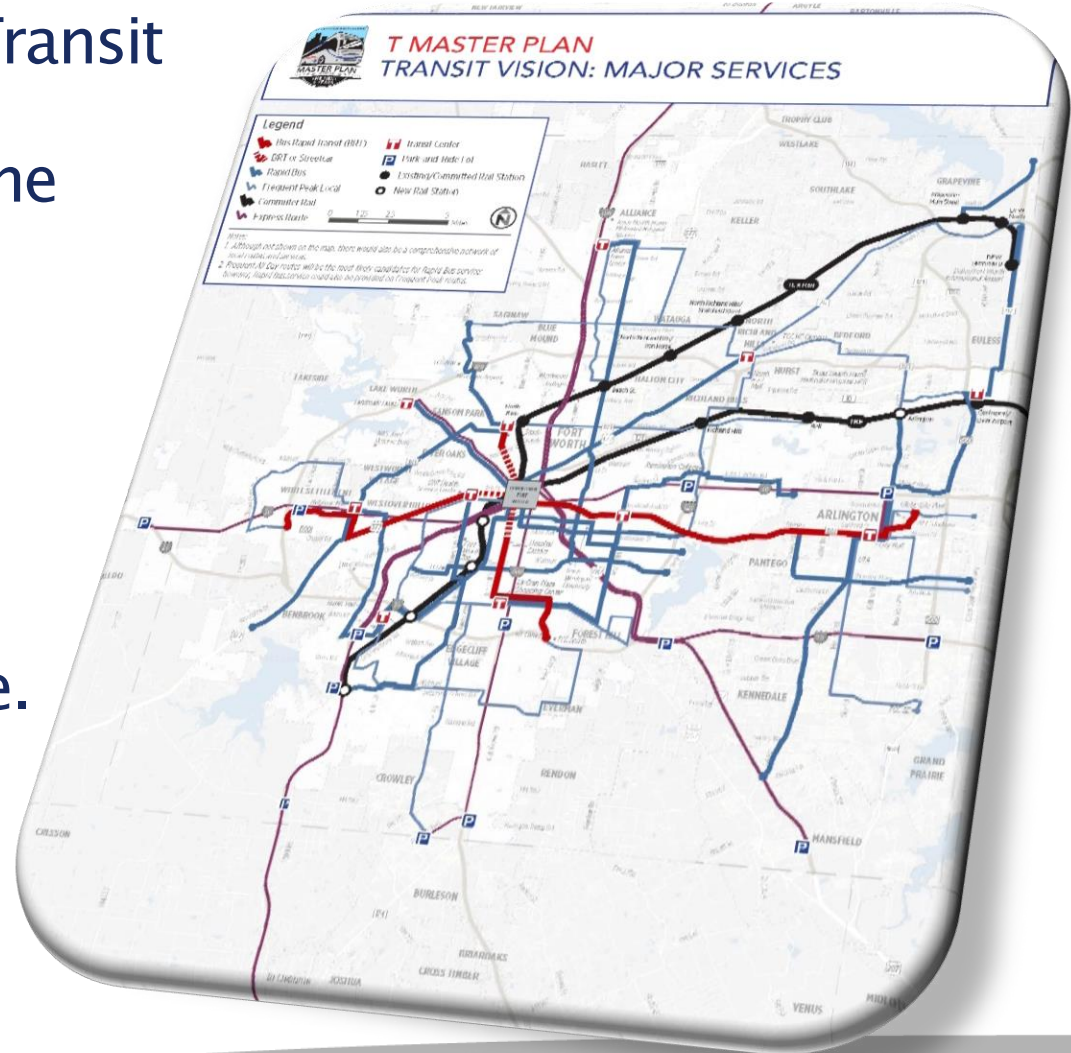


MASTER PLAN STRATEGIES

At the center of FWTA's Transit Master Plan are 10 broad strategies that focus on the next five years.

These strategies propose enhanced and expanded service to our region.

More places. More people.
More possibilities.





QUICK LINKS

- * [The T Master Plan Recommendations Report](#)
- * [The T's Transit Vision Map](#)
- * [Transit Improvement Strategies](#)
- * [The State of the System report](#)

The T Master Plan thinks big.

Great transit service supports stronger and healthier communities. The T Master Plan will develop a vision and guide for building great transit in our region over the next 20 years and with a particular emphasis on the next 5 years.

[Click below to learn more!](#)



Read The T Master Plan Recommendations Report!

After a year-long process, we have developed a final set of recommendations for improving transit in our region. The report defines a long-term Transit Vision for Tarrant County, and a blueprint for how we'll get there.

Read the Recommendations Report





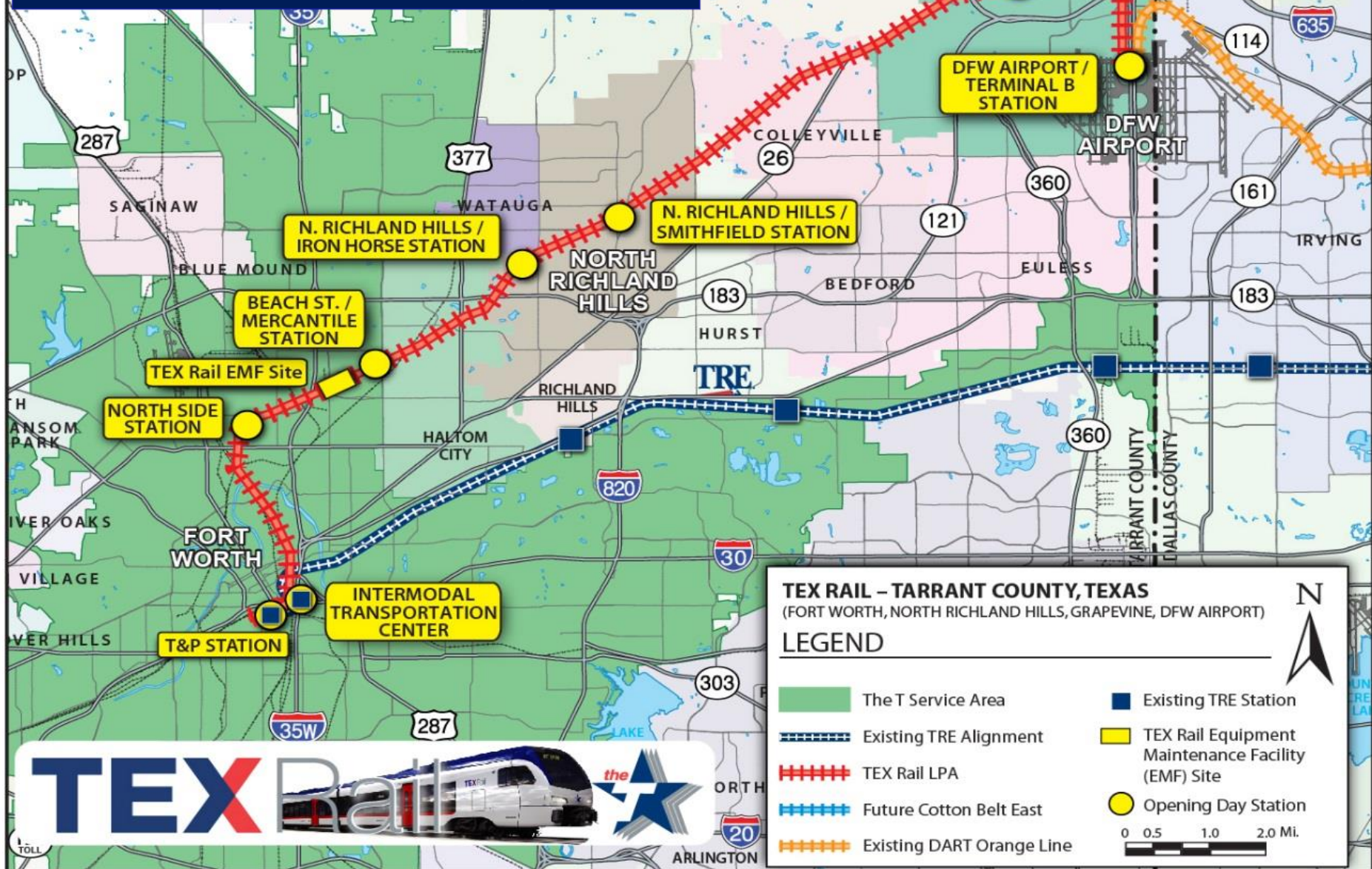
A 27-mile commuter line from
downtown Fort Worth to DFW
Airport's Terminal B

Opening in 2018



▪ Daily Ridership Projections:

- 2018: 9,094 passengers/day
- 2035: 13,698 passengers/day



Stations

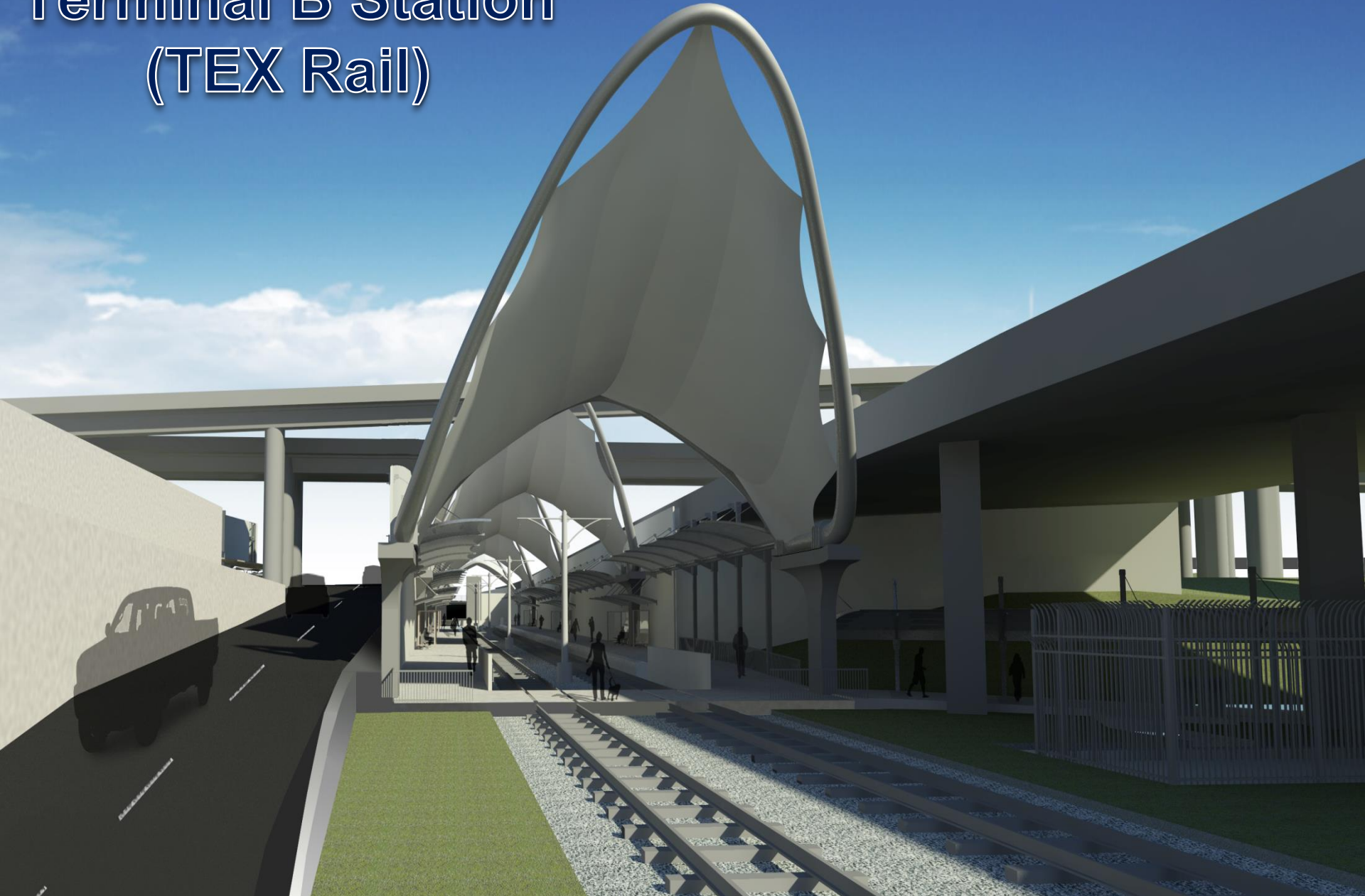
Passenger Amenities

- Canopy/shelter
- Windscreens
- Seating
- Trash Receptacles
- Landscaping
- Signage
- Ticket Vending
- Lighting
- Emergency Call Station
- Security Cameras



Concept: For example only

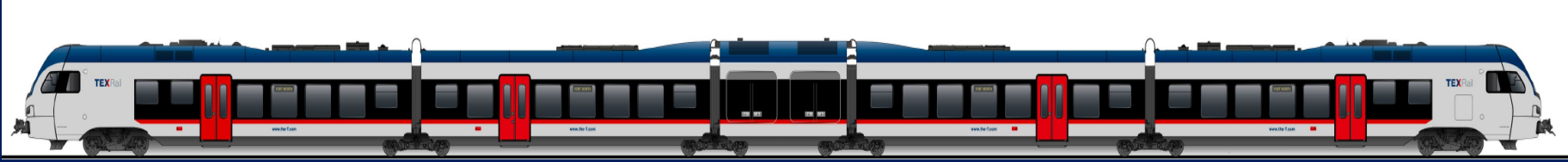
Terminal B Station (TEX Rail)



The Third Generation FLIRT



FLIRT (Fast Light Innovative Regional Train)



- Roomy design for even greater passenger comfort.
- Comfortable ride
- Low noise level
- Double leaf swing-plug doors
- Extendable platforms guarantee rapid and comfortable passenger boarding even for people with disabilities, parents pushing strollers



Interior Space



- Quiet Car (Designated peaceful place to work or rest)
- USB charging ports at each seat
- Seatback tables, work tables

Entrance Doors



Ergonomic workplace





Fast Facts

Service Frequency

- AM Peak: 30-minute headways
- PM Peak: 30-minute headways
- Off-peak/weekends: 90-minute headways (2018)
- Off-peak/weekends: 60-minute headways (2030)

Daily Train Movements

- 42 passenger trains a day (Full-Build)

Travel Time

- End to end: 52 min. (EB) + 52 min. (WB)
- Round Trip: 104 min.





The T Fort Worth
@TheTFortWorth

 Follow

Thanks to everyone for the great celebration today! [#TEXRail2018](#)



Questions or Comments



Curvie Hawkins
curvie.hawkins@fwta.org

 **@dubnation**