



# South Main Street Complete Streets Project

TexITE Fall Meeting

Fort Worth, Texas

September 22, 2016

Presented by:  
Adam Brewster, RLA  
Dunaway Associates

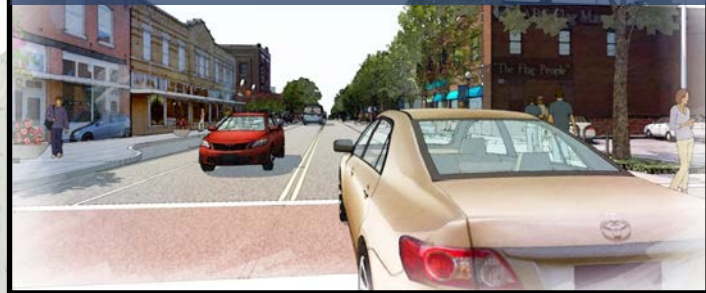
“A Complete Street is a road that is designed to be safe for drivers; bicyclists; transit vehicles and users; and pedestrians of all ages and abilities”  
-John LaPlante



Pedestrians



Drivers



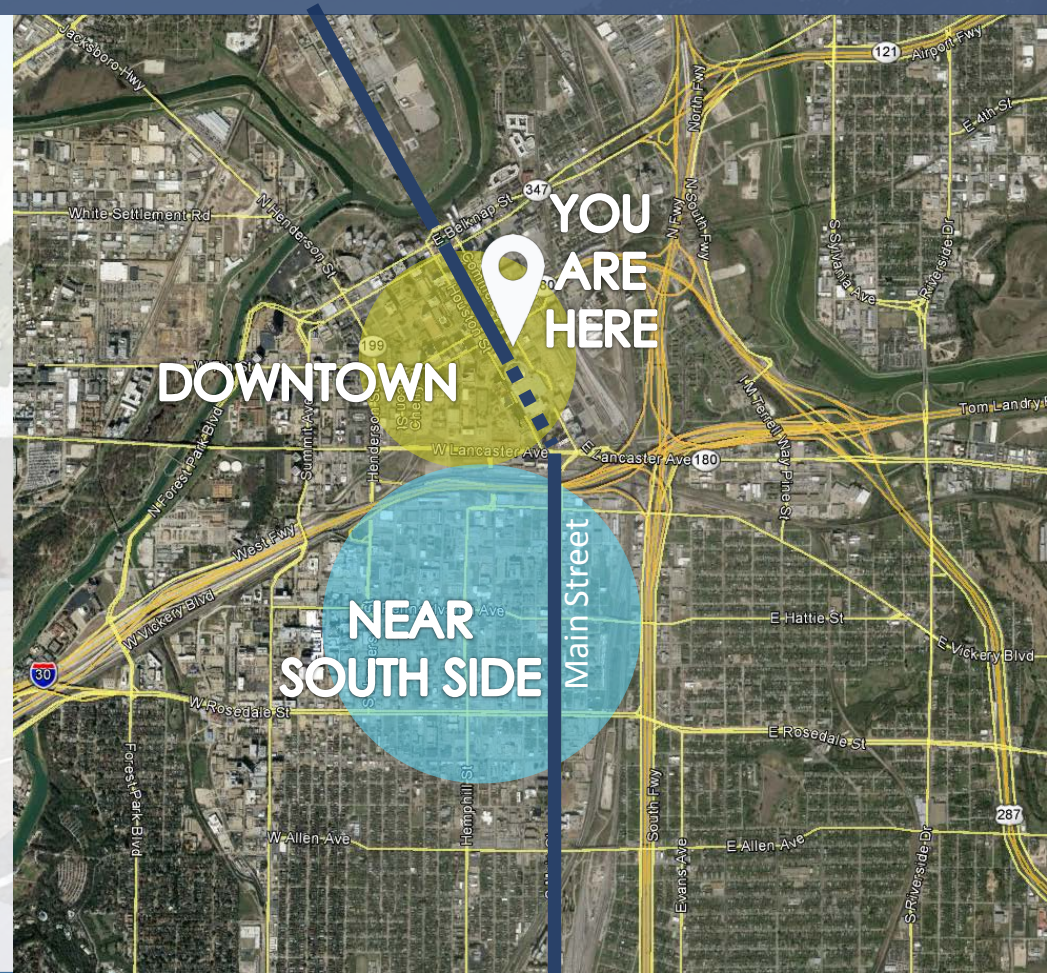
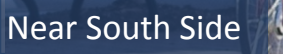
Transit Riders



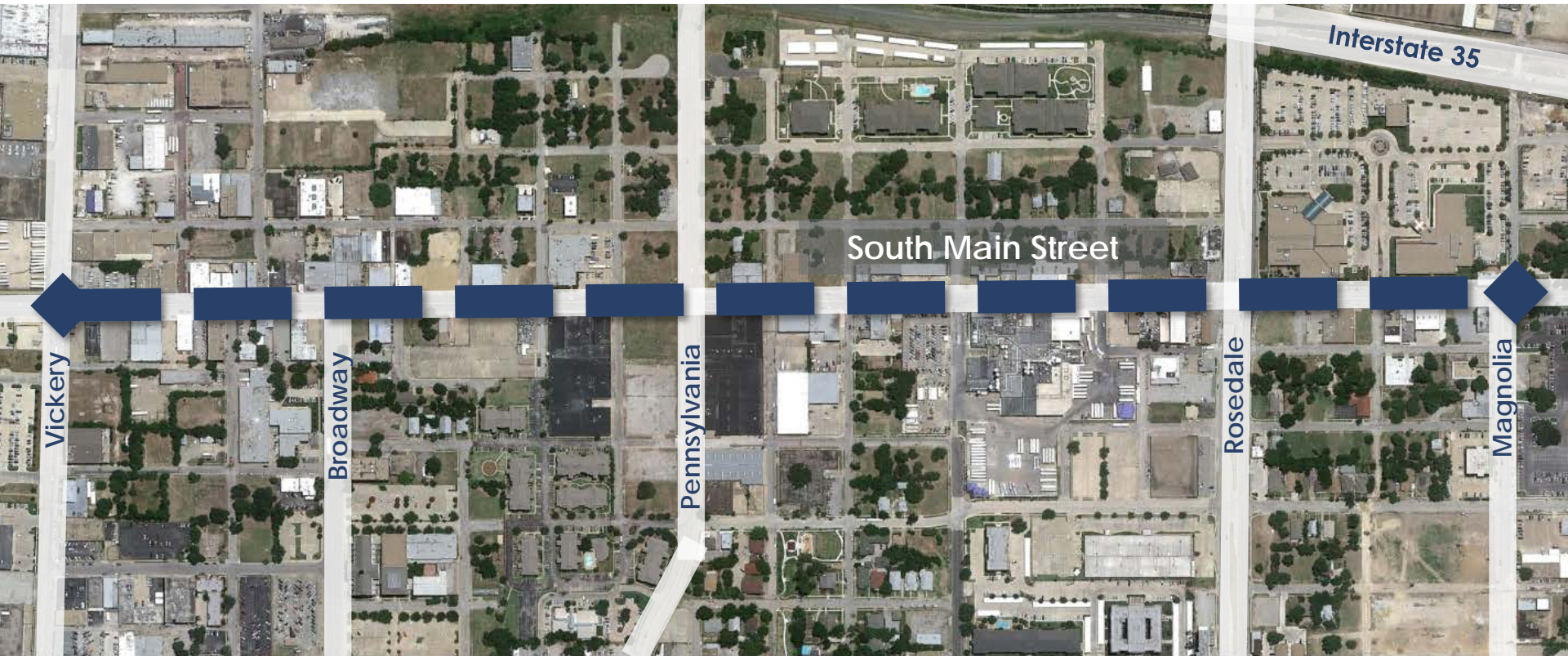
Bicyclists



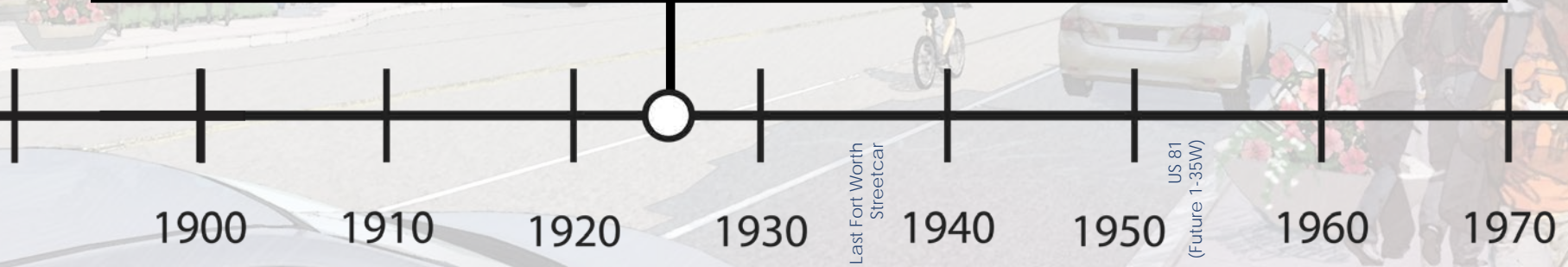












Last Fort Worth  
Streetcar

US 81  
(Future 1-35W)





DFW Turnpike  
Opens (Future 1-30)

1960

1970

1980

Magnolia  
Streetscape

1990

Southside TIF  
Established

2000

2010



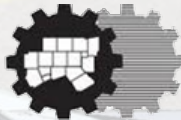


## Project Scope:

- Roadway Reconstruction
- Sidewalk Improvements
- Pedestrian Lighting
- Utility Upgrades
- Landscape Enhancements
- Public Art Installation



SECURED FUNDING	SOURCE
\$3,000,000	2010 <b>NCTCOG</b> Sustainable Development Program [RTR funds]
\$2,750,000	<b>TIF #4</b>
\$1,905,000	<b>City of Fort Worth</b> via Water Department
\$740,000	<b>Tarrant County</b>
<b>\$8,395,000</b>	<b>TOTAL</b>



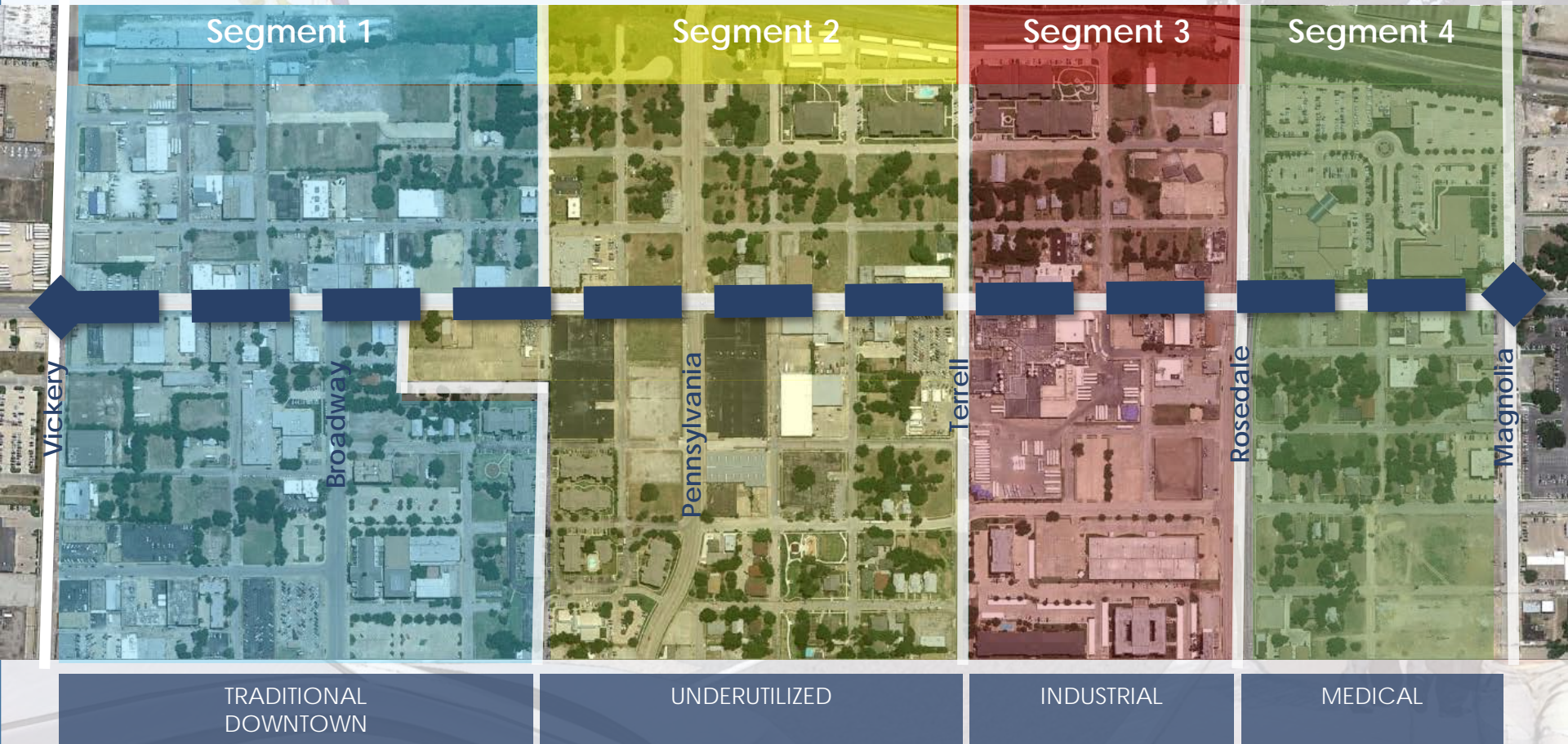
North Central Texas  
Council of Governments

The logo features a detailed illustration of a historic building with a clock tower, likely the Old Fort Worth City Hall.

Fort Worth South, Inc.

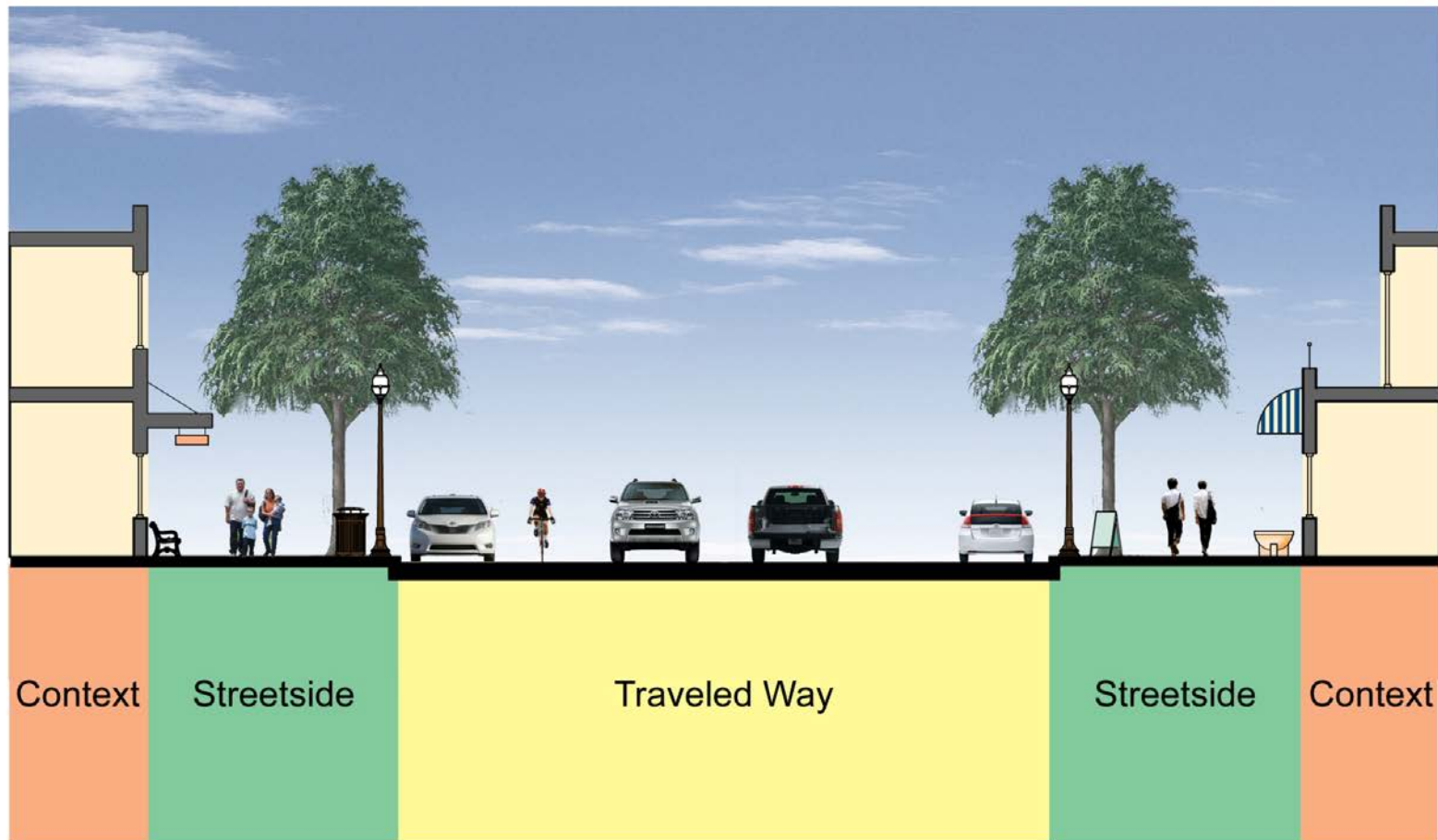




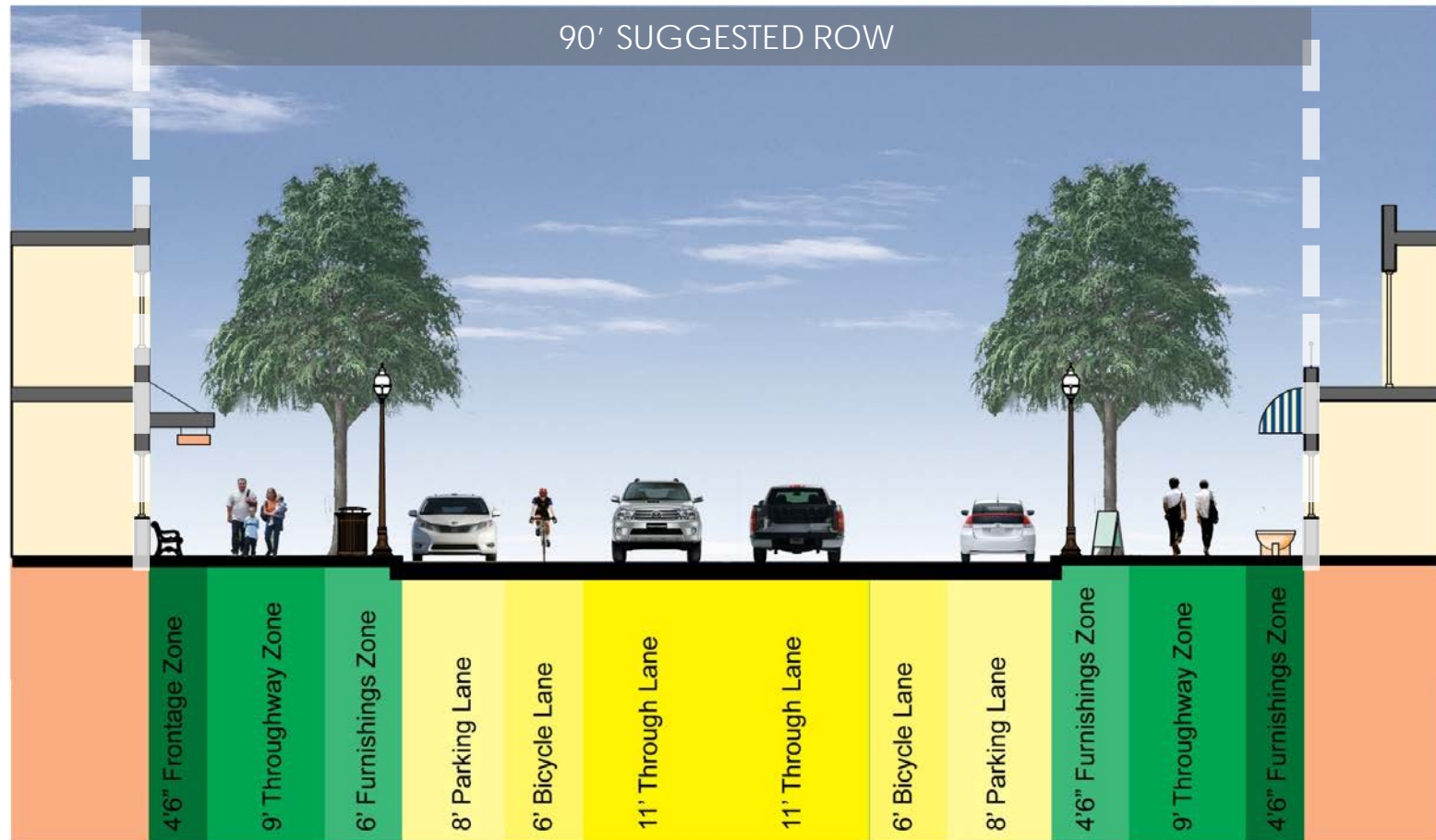




## Elements of a Typical Street

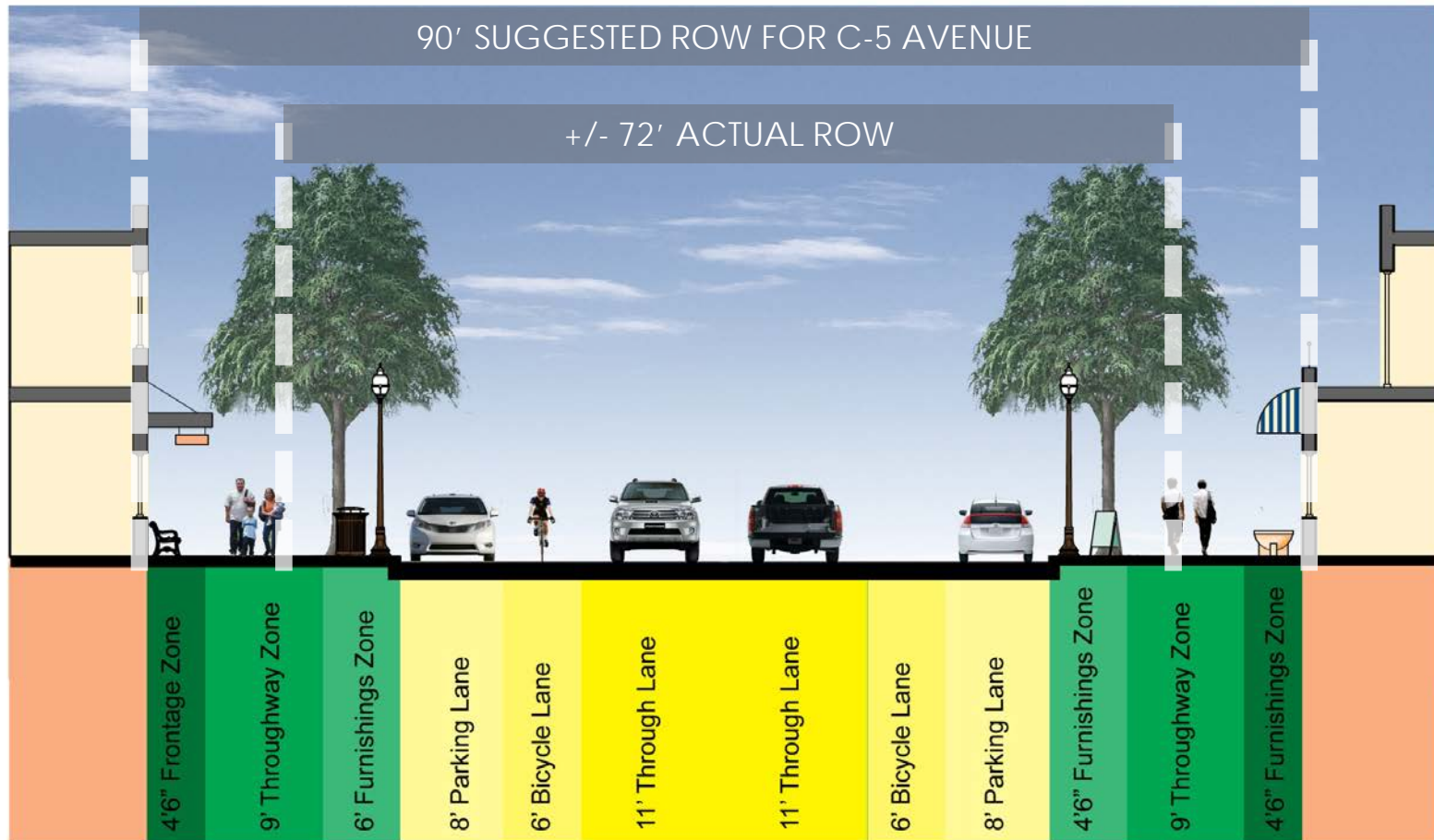








## Existing ROW



## Proposed Roadway Elements

### Project Data:

- Concrete Pavement Section
- Accommodate Future Transit Needs
- On-Street Parking
- Continuous Bike Lane

8' Parking Lane

5' Bike Lane

11' Travel Lane



Vickery

Pennsylvania

South Main Street

Rosedale

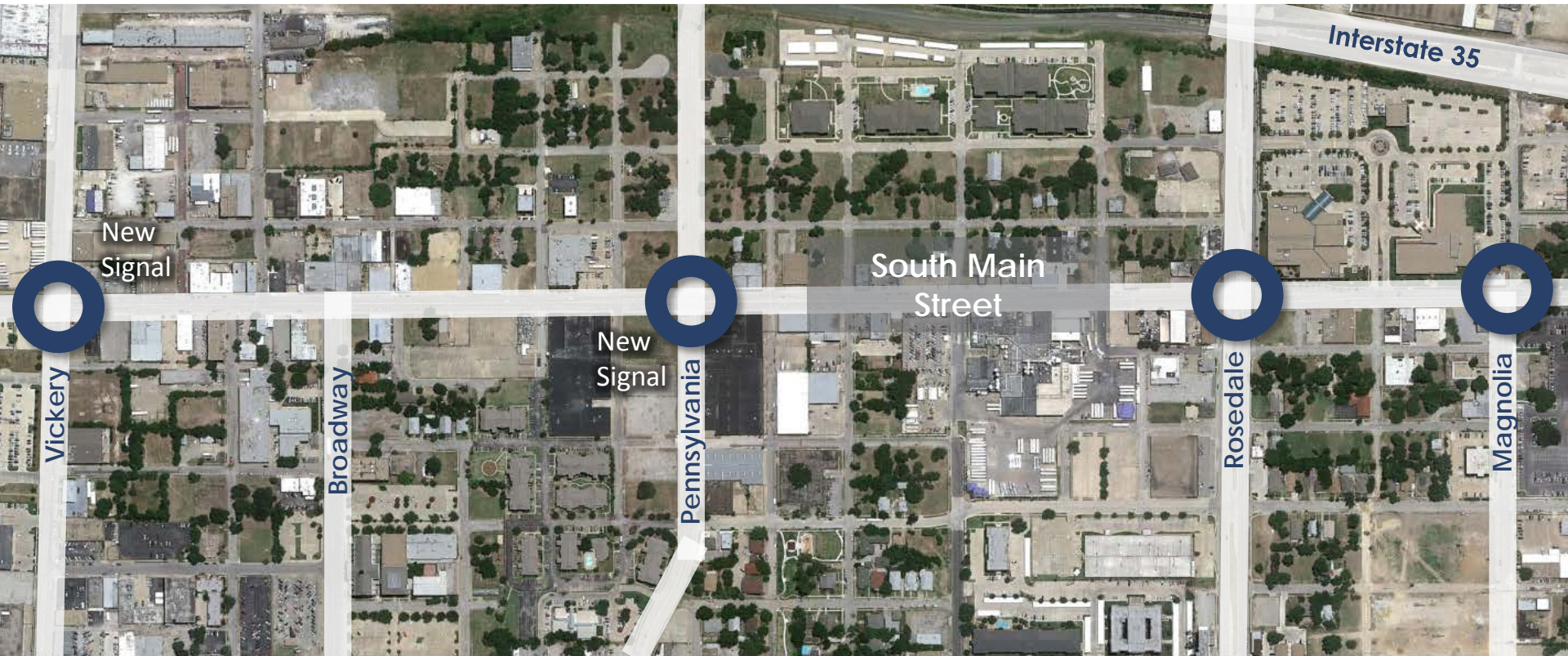
Magnolia

Used NCHRP Report 684 – *Enhancing Internal Trip Capture Estimation for Mixed-Use Developments*

Assumed Mode Split for trips to/from the proposed development

- Transit (10%) – “T” Bus Route 5, 4, and 9 (Future Streetcar)
- Non-Motorized (10%) – South Main is currently on the Bike Plan
- Vehicular (80%)







## Project Data:

- Sanitary Sewer Main
- Water Main
- Storm Sewer Upgrade
- Franchise Utilities



Sidewalk (Bulb-out)	Bike Lane	South Bound	North Bound	Bike Lane	Parking	Sidewalk
------------------------	--------------	----------------	----------------	--------------	---------	----------

# Streetscape Enhancements

Street Trees

14' Street Lights

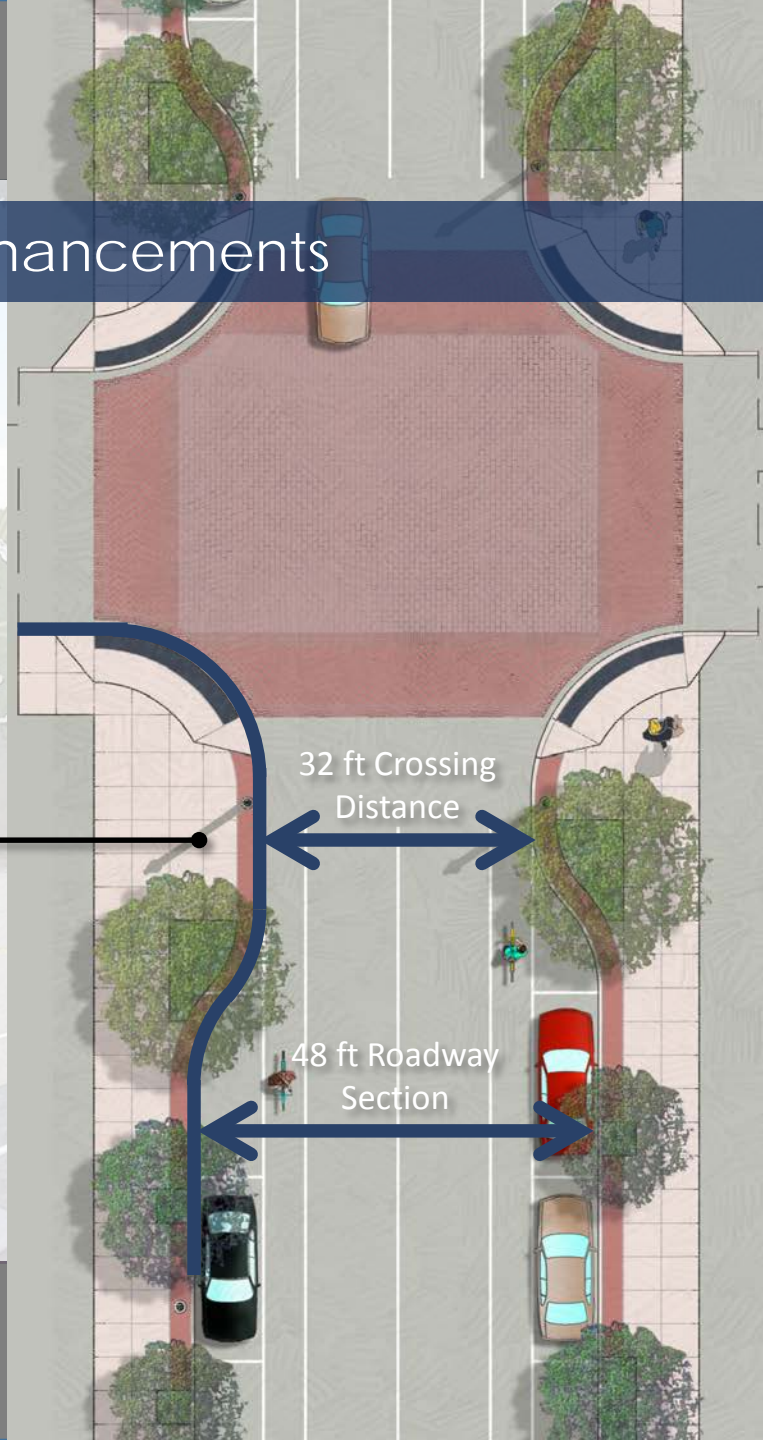
Accessible  
Curb Ramps

Stamped &  
Stained Concrete

10' Wide  
Crosswalks









# Streetscape Enhancements







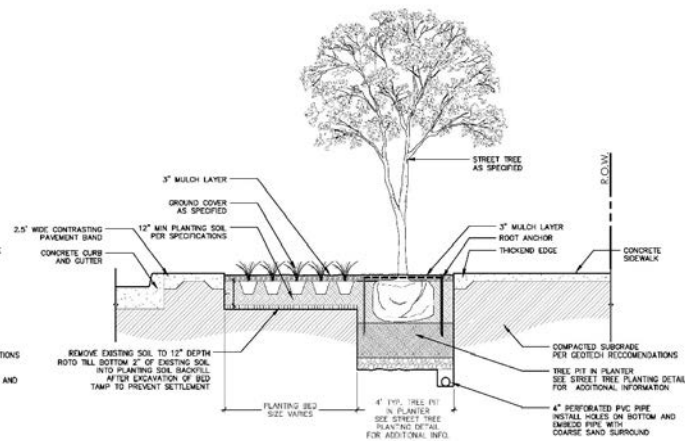
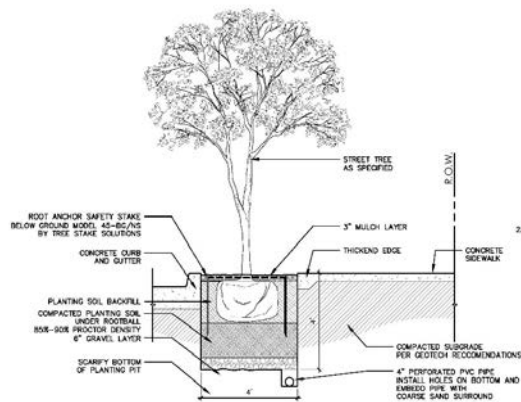
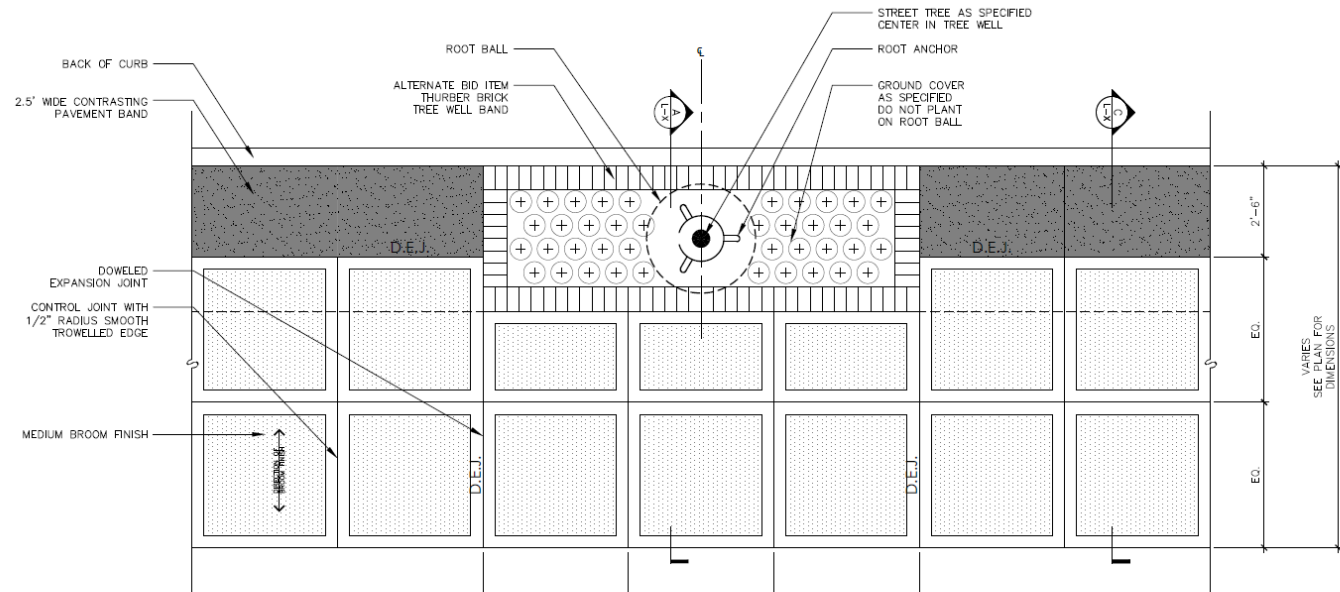
14' Street Lights













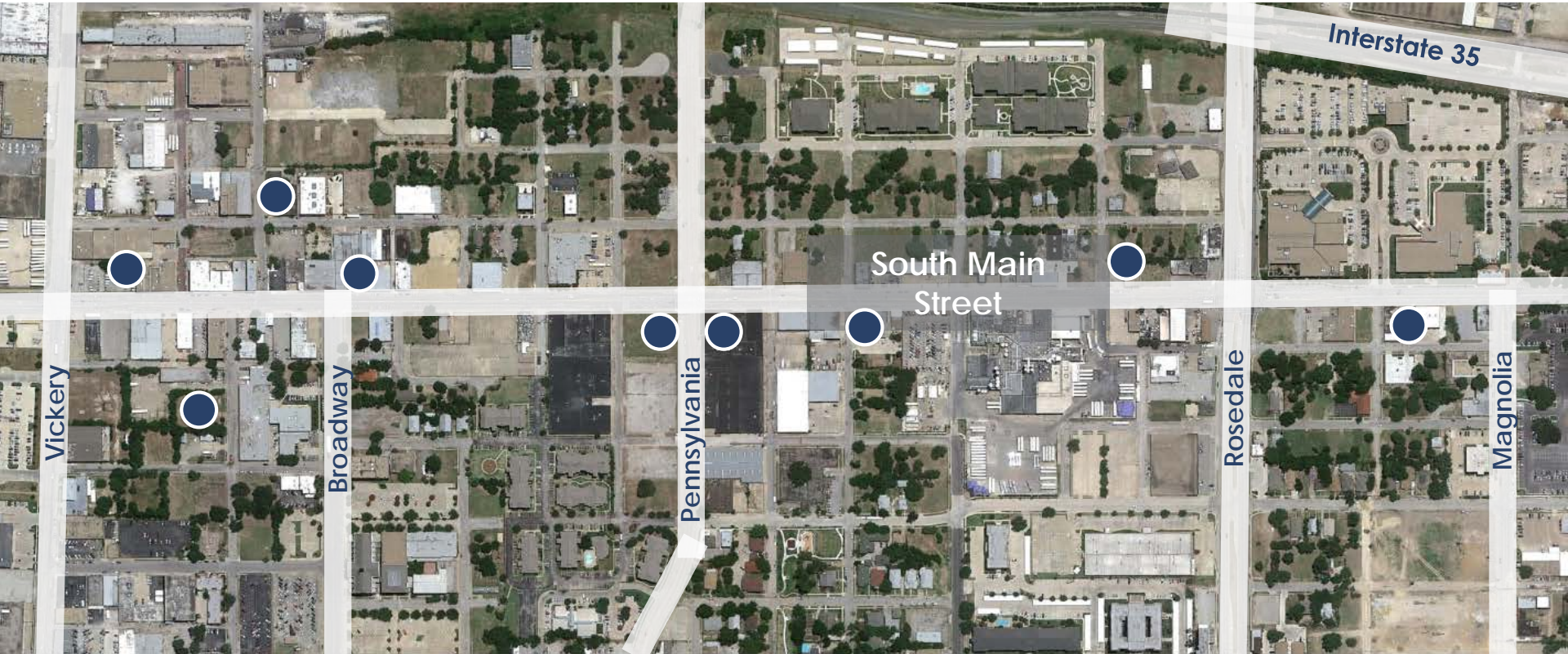














# High Point Apartments





# High Point Apartments (Under Construction)





# UT Southwestern





# UT Southwestern (Under Construction)





# Hop Fusion Brewery





1001 South Main





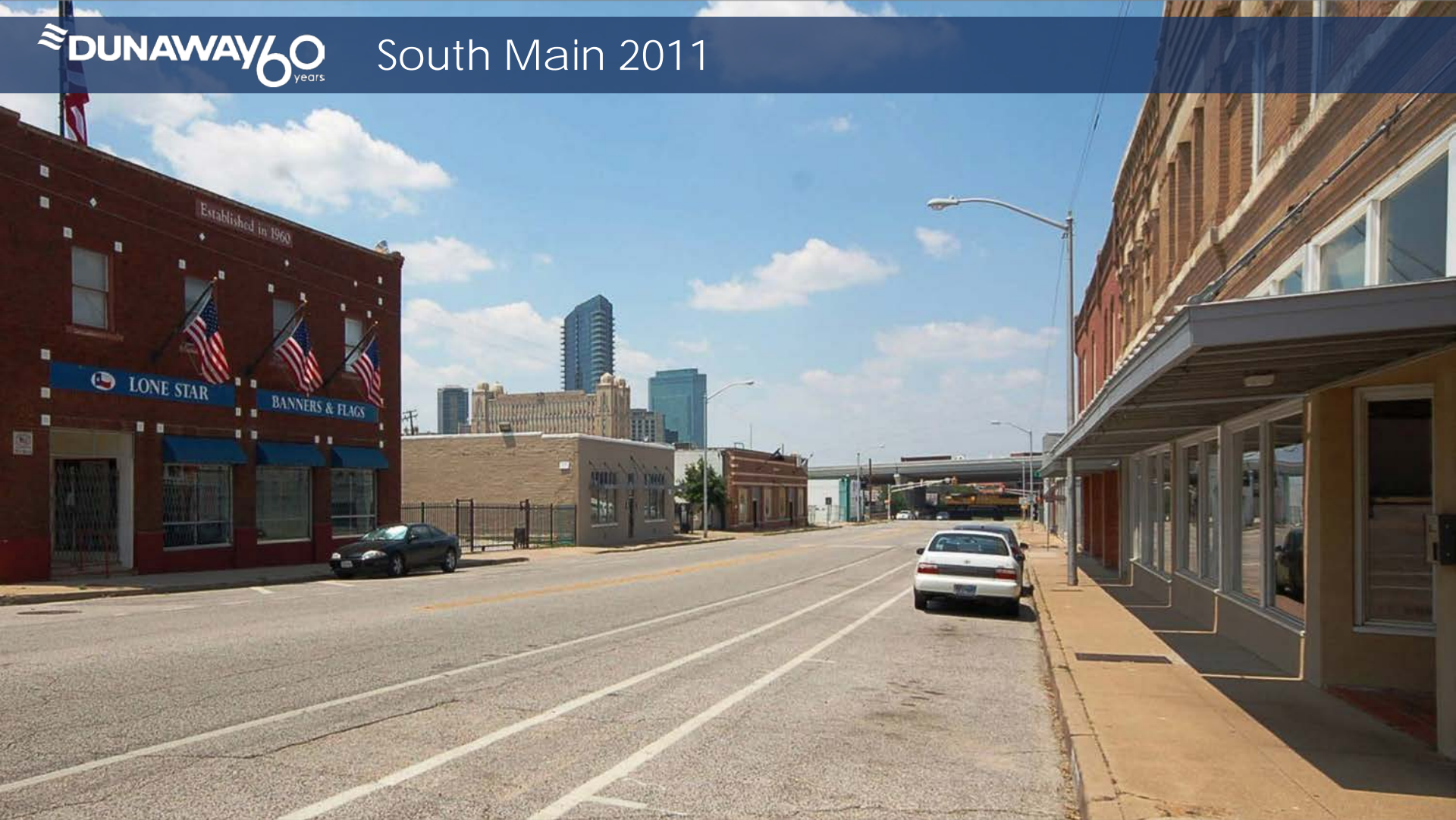
# 710 South Main





# East Broadway Apartments







 **DUNAWAY** 60 years

## South Main Today





# South Main Street

