



TEXAS DEPARTMENT OF TRANSPORTATION



REAL LIFE,
REAL CONSEQUENCES

Jay Fonville

LANE Construction Corporation

www.laneconstruct.com



05/04/2012



05/04/2012







11/02/2012

Safe and Effective Use of Law Enforcement Personnel in Work Zones

***We have trained
948 Texas Law Enforcement Officers
In this course as of today***







Fatal Crashes and Fatalities Calendar

2012

JANUARY						
SUN	MON	TUE	WED	THU	FRI	SAT
1 12	2 4	3 5	4 6	5 7	6 8	7 10
8 13	9 4	10 5	11 6	12 7	13 8	14 9
15 7	16 8	17 9	18 10	19 11	20 12	21 13
22 11	23 12	24 13	25 14	26 15	27 16	28 17
29 18	30 19	31 20				

FEBRUARY						
SUN	MON	TUE	WED	THU	FRI	SAT
1 3	2 4	3 5	4 6	5 7	6 8	7 10
8 13	9 4	10 5	11 6	12 7	13 8	14 9
15 11	16 12	17 13	18 14	19 15	20 16	21 17
22 18	23 19	24 20	25 21	26 22	27 23	28 24
29 25	30 26	31 27				

MARCH						
SUN	MON	TUE	WED	THU	FRI	SAT
1 4	2 5	3 6	4 7	5 8	6 9	7 10
8 11	9 12	10 13	11 14	12 15	13 16	14 17
15 18	16 19	17 20	18 21	19 22	20 23	21 24
22 25	23 26	24 27	25 28	26 29	27 30	28 31

APRIL						
SUN	MON	TUE	WED	THU	FRI	SAT
1 10	2 11	3 12	4 13	5 14	6 15	7 16
8 17	9 18	10 19	11 20	12 21	13 22	14 23
15 24	16 25	17 26	18 27	19 28	20 29	21 30
22 31	23	24	25	26	27	28

MAY						
SUN	MON	TUE	WED	THU	FRI	SAT
1 12	2 13	3 14	4 15	5 16	6 17	7 18
8 19	9 20	10 21	11 22	12 23	13 24	14 25
15 26	16 27	17 28	18 29	19 30	20 31	

JUNE						
SUN	MON	TUE	WED	THU	FRI	SAT
1 8	2 9	3 10	4 11	5 12	6 13	7 14
8 15	9 16	10 17	11 18	12 19	13 20	14 21
15 22	16 23	17 24	18 25	19 26	20 27	21 28
22 29	23 30	24 31				

JULY						
SUN	MON	TUE	WED	THU	FRI	SAT
1 13	2 14	3 15	4 16	5 17	6 18	7 19
8 20	9 21	10 22	11 23	12 24	13 25	14 26
15 27	16 28	17 29	18 30	19 31		

AUGUST						
SUN	MON	TUE	WED	THU	FRI	SAT
1 10	2 11	3 12	4 13	5 14	6 15	7 16
8 17	9 18	10 19	11 20	12 21	13 22	14 23
15 24	16 25	17 26	18 27	19 28	20 29	21 30
22 31						

SEPTEMBER						
SUN	MON	TUE	WED	THU	FRI	SAT
1 12	2 13	3 14	4 15	5 16	6 17	7 18
8 19	9 20	10 21	11 22	12 23	13 24	14 25
15 26	16 27	17 28	18 29	19 30	20 31	

OCTOBER						
SUN	MON	TUE	WED	THU	FRI	SAT
1 7	2 8	3 9	4 10	5 11	6 12	7 13
8 14	9 15	10 16	11 17	12 18	13 19	14 20
15 21	16 22	17 23	18 24	19 25	20 26	21 27
22 28	23 29	24 30	25 31			

NOVEMBER						
SUN	MON	TUE	WED	THU	FRI	SAT
1 11	2 12	3 13	4 14	5 15	6 16	7 17
8 18	9 19	10 20	11 21	12 22	13 23	14 24
15 25	16 26	17 27	18 28	19 29	20 30	21 31

DECEMBER						
SUN	MON	TUE	WED	THU	FRI	SAT
1 10	2 11	3 12	4 13	5 14	6 15	7 16
8 17	9 18	10 19	11 20	12 21	13 22	14 23
15 24	16 25	17 26	18 27	19 28	20 29	21 30
22 31						

Date 4 Fatal Crashes
6 Fatalities

Deathless Days

Information contained in this report represents reportable data collected from Texas Peace Officer's Crash Reports (CR-3) received and processed by the Department as of May 27, 2013.



Texas Motor Vehicle Traffic Crash Highlights Calendar Year 2012

- The Fatality Rate on Texas roadways for 2012 was 1.41 deaths per hundred million vehicle miles traveled. This is a 9.3% increase from 2011.
- Texas experienced an increase in the number of motor vehicle traffic fatalities. The 2012 death toll of 3,399 was an increase of 10.82% from the 3,067 deaths recorded in 2011.
- There were 63,610 serious injury crashes in Texas in 2012 with 87,087 people sustaining a serious injury.
- The annual vehicle miles traveled in Texas during 2012 reached 240.616 billion, an increase of 1.34% over the 237.443 billion traveled in 2011.
- Fatalities in traffic crashes in rural areas of the state accounted for 55.7% of the state's traffic fatalities. There were 1,892 deaths in rural traffic crashes.
- Single vehicle, run-off the road crashes resulted in 1,315 deaths in 2012. This was 38.7% of all motor vehicle traffic deaths in 2012.
- In 2012 there were 838 people killed in crashes occurring in intersections or related to an intersection.
- There were 533 people killed in head-on crashes in 2012.
- There were no deathless days on Texas roadways in 2012.
- There were two crashes that resulted in 6 or more fatalities in 2012.
- Sunday, July 22nd was the deadliest day in 2012 with twenty-eight (28) persons killed in traffic crashes. July was the deadliest month with 309 persons killed.
- Based on reportable crashes in 2012:
 - 1 person was killed every 2 hours 35 minutes
 - 1 person was injured every 2 minutes 17 seconds
 - 1 reportable crash occurred every 75 seconds
- Of all persons killed in vehicles where restraint usage was applicable and usage was known in 2012, 45.4% were reported as not restrained when the fatal crash occurred.
- 230,506 persons were injured in motor vehicle traffic crashes in 2012.
- There were 467 motorcyclists (operators and passengers) killed in 2012. Fifty-two percent (52%) of motorcyclists killed were not wearing helmets at the time of the crash.
- Pedestrian fatalities totaled 481 in 2012. This is a 13.2% increase from 2011.
- Pedalcyclist fatalities totaled 56 in 2012. This is a 19.1% increase from 2011.
- In 2012, there were 1,099 people killed in motor vehicle traffic crashes where a driver was under the influence of alcohol. This is 32.3% of the total number of people killed in motor vehicle traffic crashes.
- During 2012, more DUI - Alcohol crashes were reported in the hour between 2:00 am and 2:59 am than any other hour of the day. Also, more of these crashes occurred on Sunday than any other day of the week.

Information contained in this report represents reportable data collected from Texas Peace Officer's Crash Reports (CR-3) received and processed by the Department as of May 27, 2013.

Safe and Effective Use of Law Enforcement In Work Zones

...why we support the class

The purpose of the class:

- * To teach officers the importance of their job, while in a work zone
- * To work with the traffic queue to avoid rear end crashes
- * Move vehicle to wear they will be in a safe position
- * The class is **FREE** to all Law Enforcement Officers

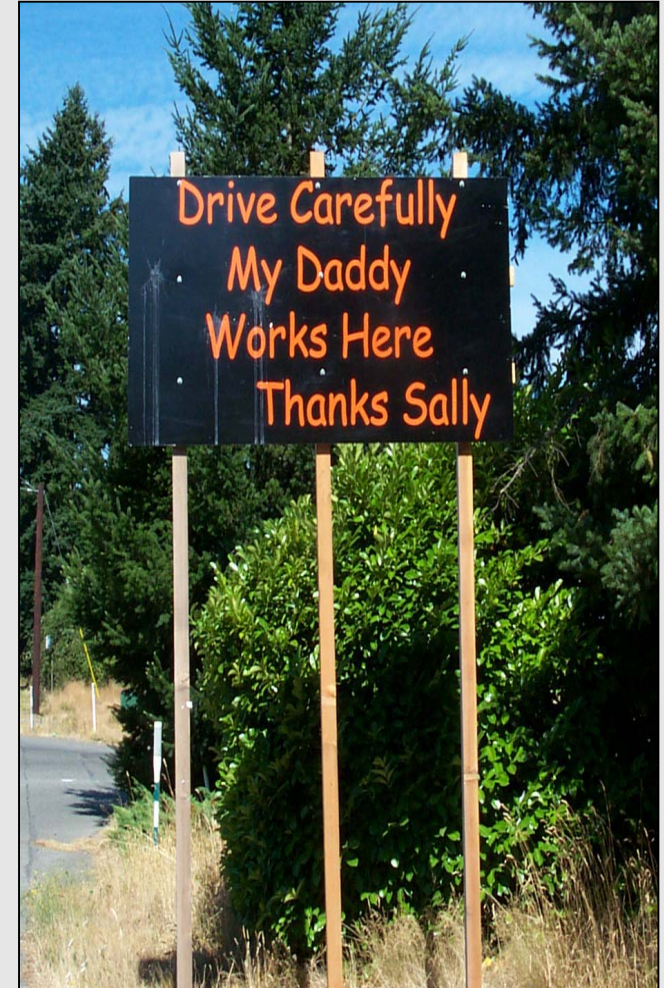
Real Consequences

- **2012**
 - **13,018 work zone injuries**
 - **10,263 Non-Injury Crashes in work zones**
 - **132 work zone deaths**

1 person was killed every 2 hours 35 minutes

1 person was injured every 2 minutes 17 seconds

1 reportable crash occurred every 75 seconds



Things that **LANE** Construction does to help with traffic safety

Supervisor's take free online courses (National Incident Management System) thru FEMA

WWW.TRAINING.FEMA.GOV

- * IS-100.b Introduction to Incident Command System
- * IS-700.a Introduction to the National Incident Management System

At anytime, there can be an incident on I-35. Most of the time, the contractor is the first to be on scene. The Supervisor needs to know what hazards to look for, and how to handle the incident until First Responders arrive on scene.

HazMat Spill Kits for Vehicles

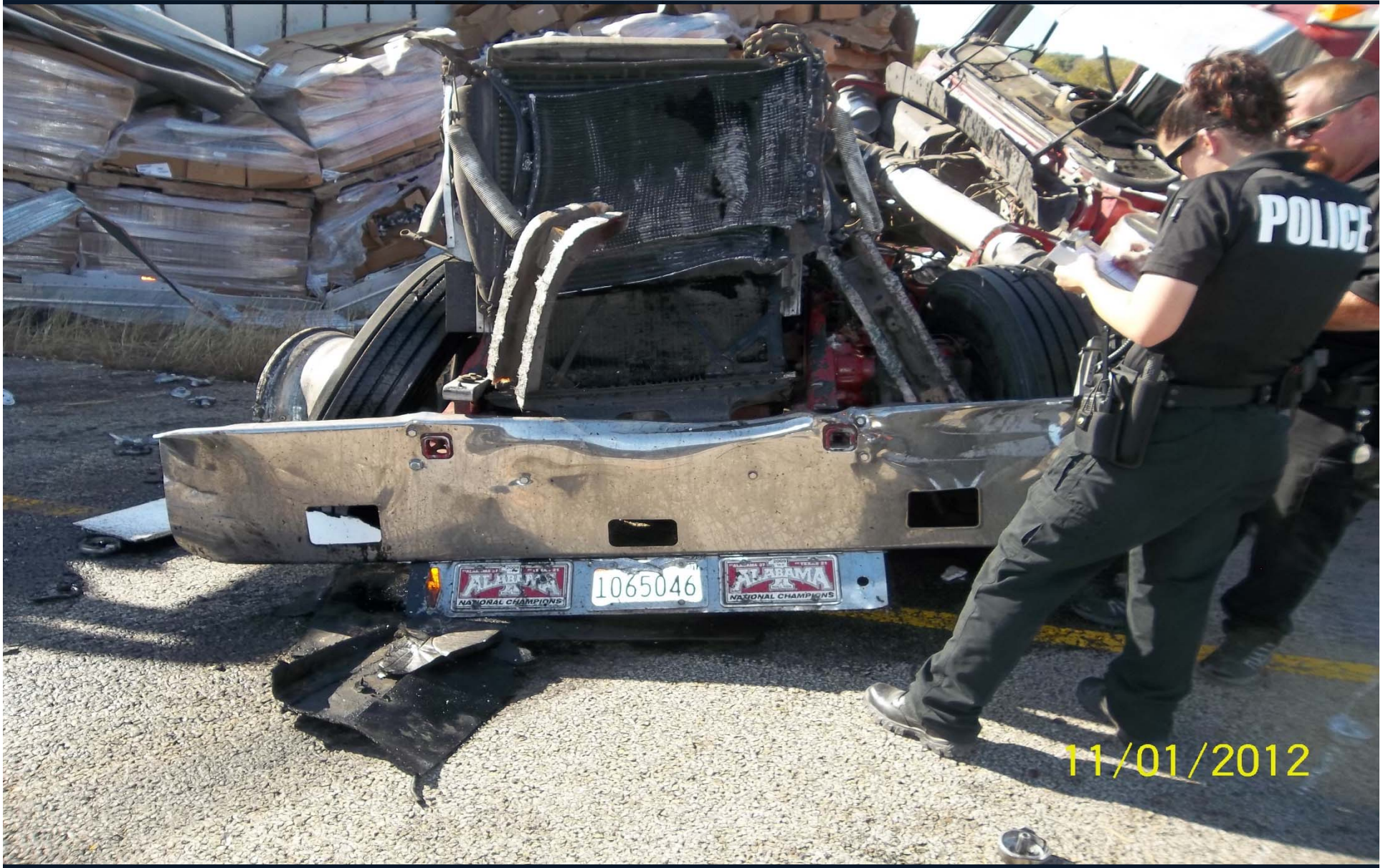


11/01/2012



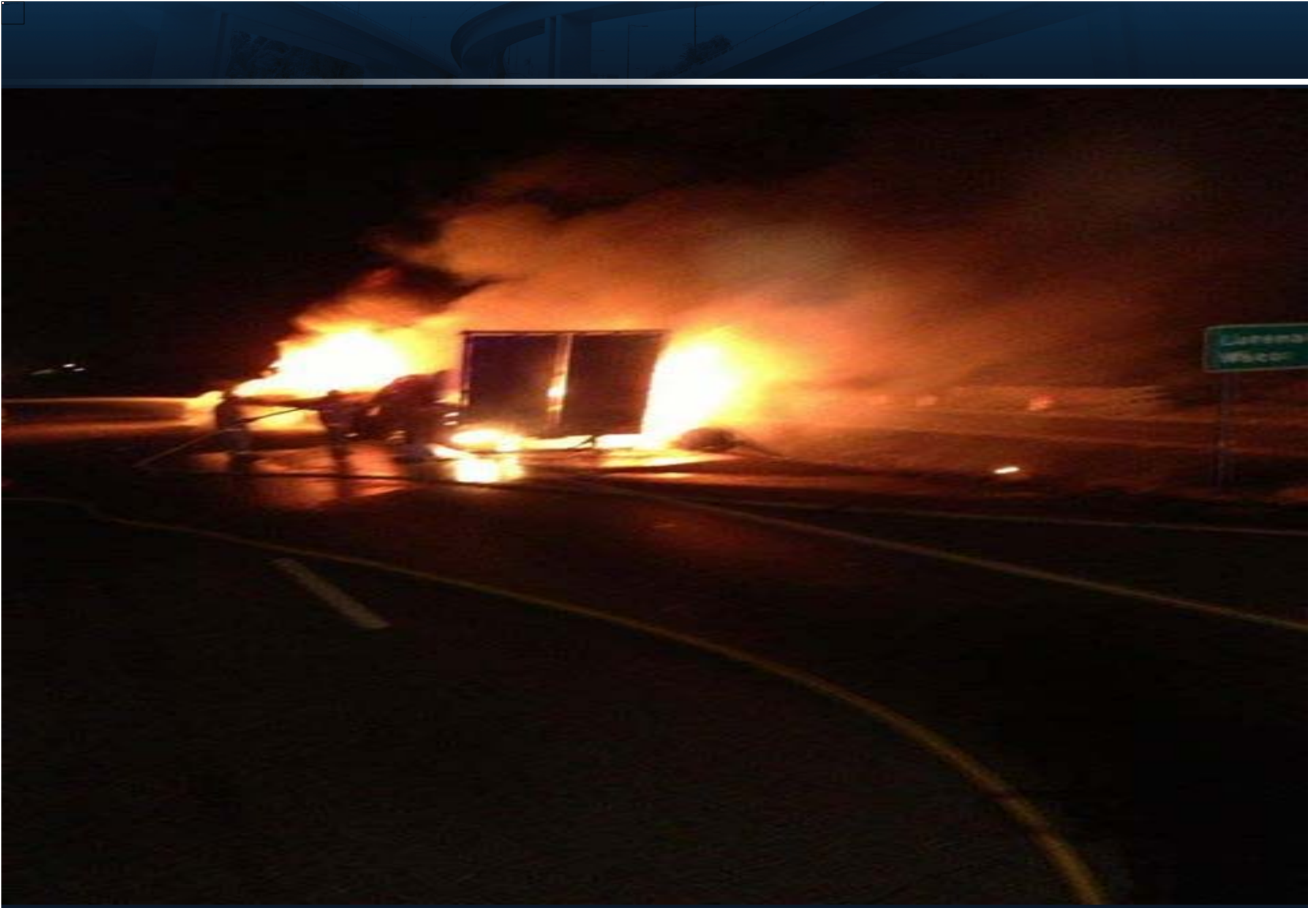




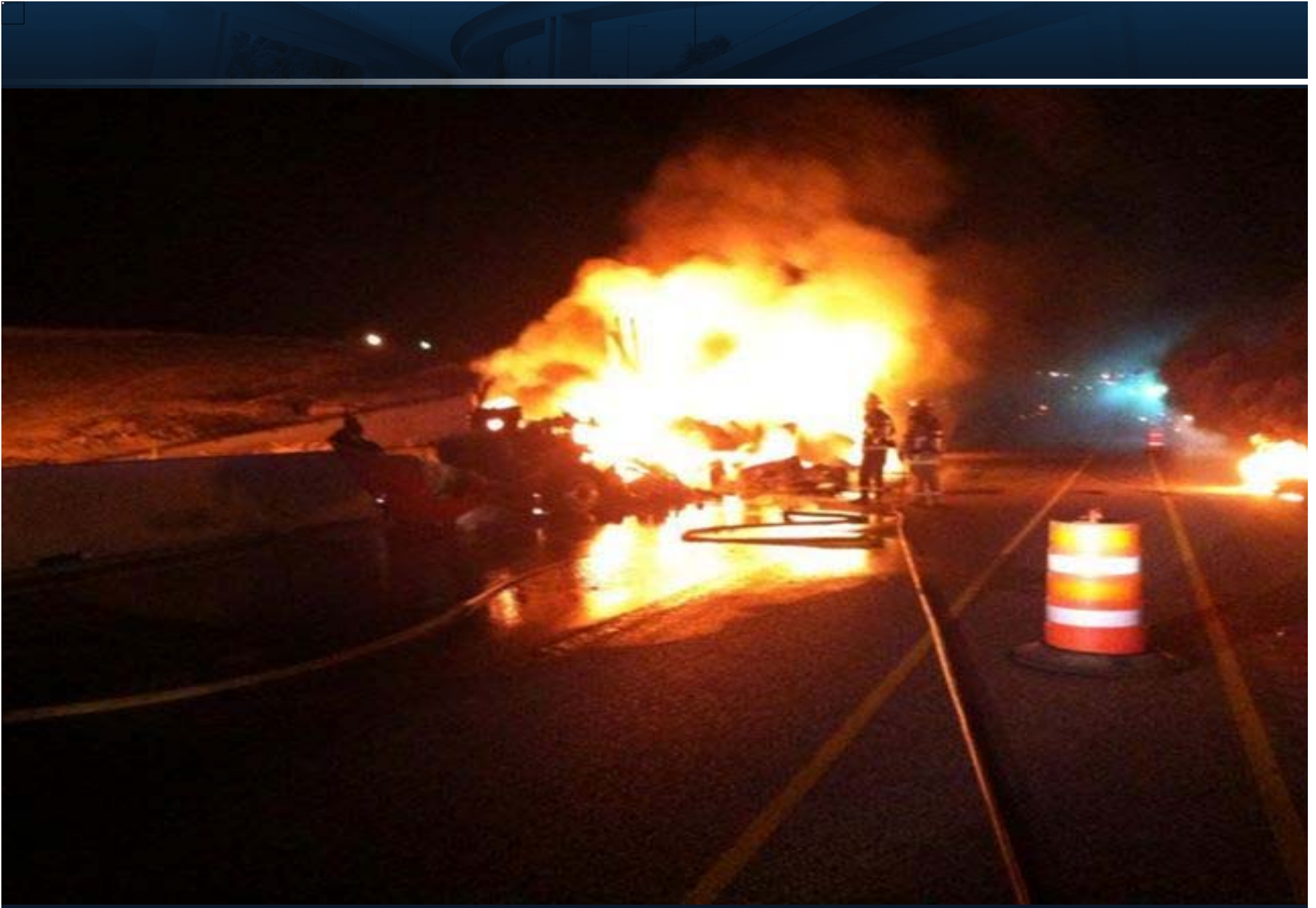






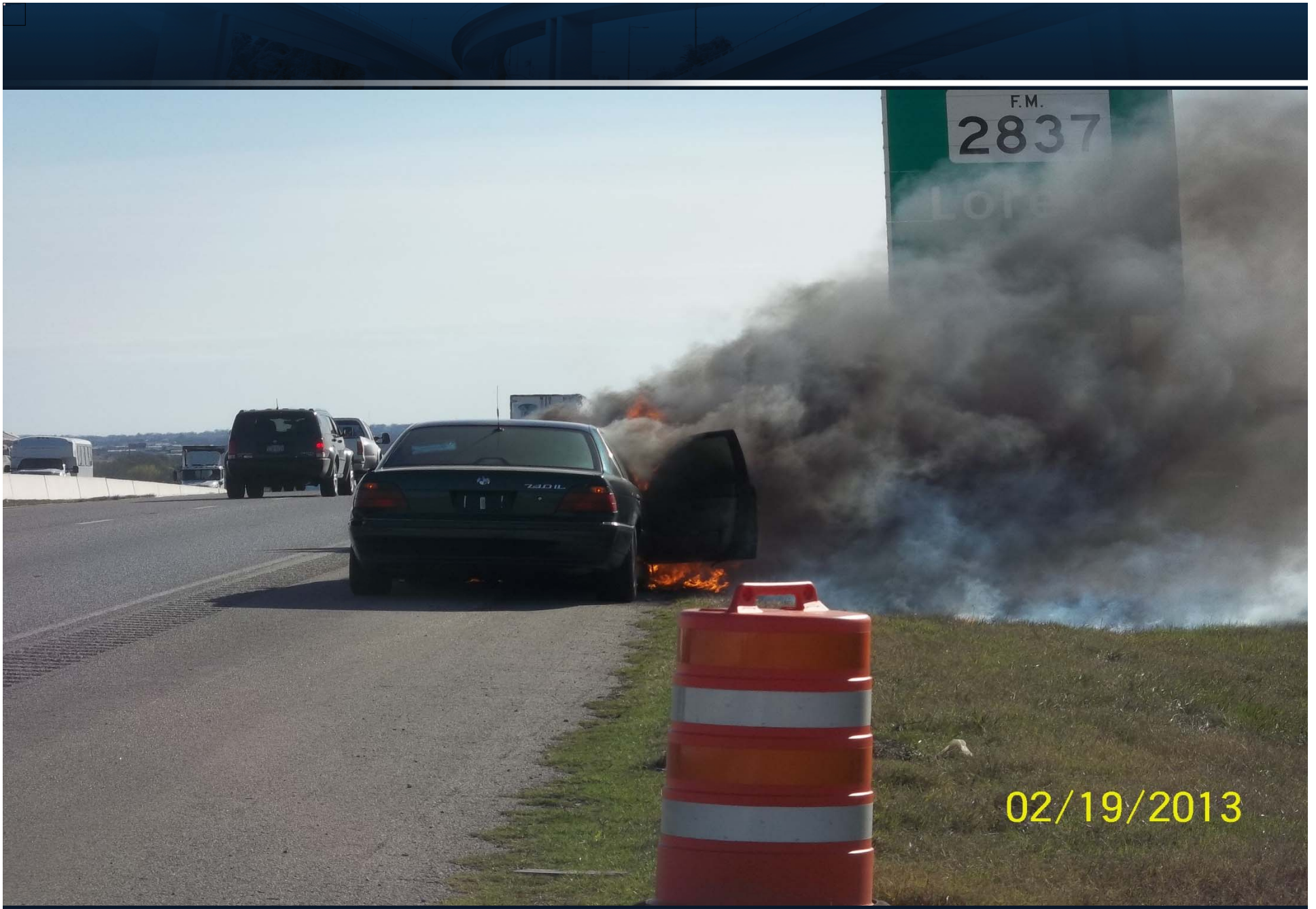






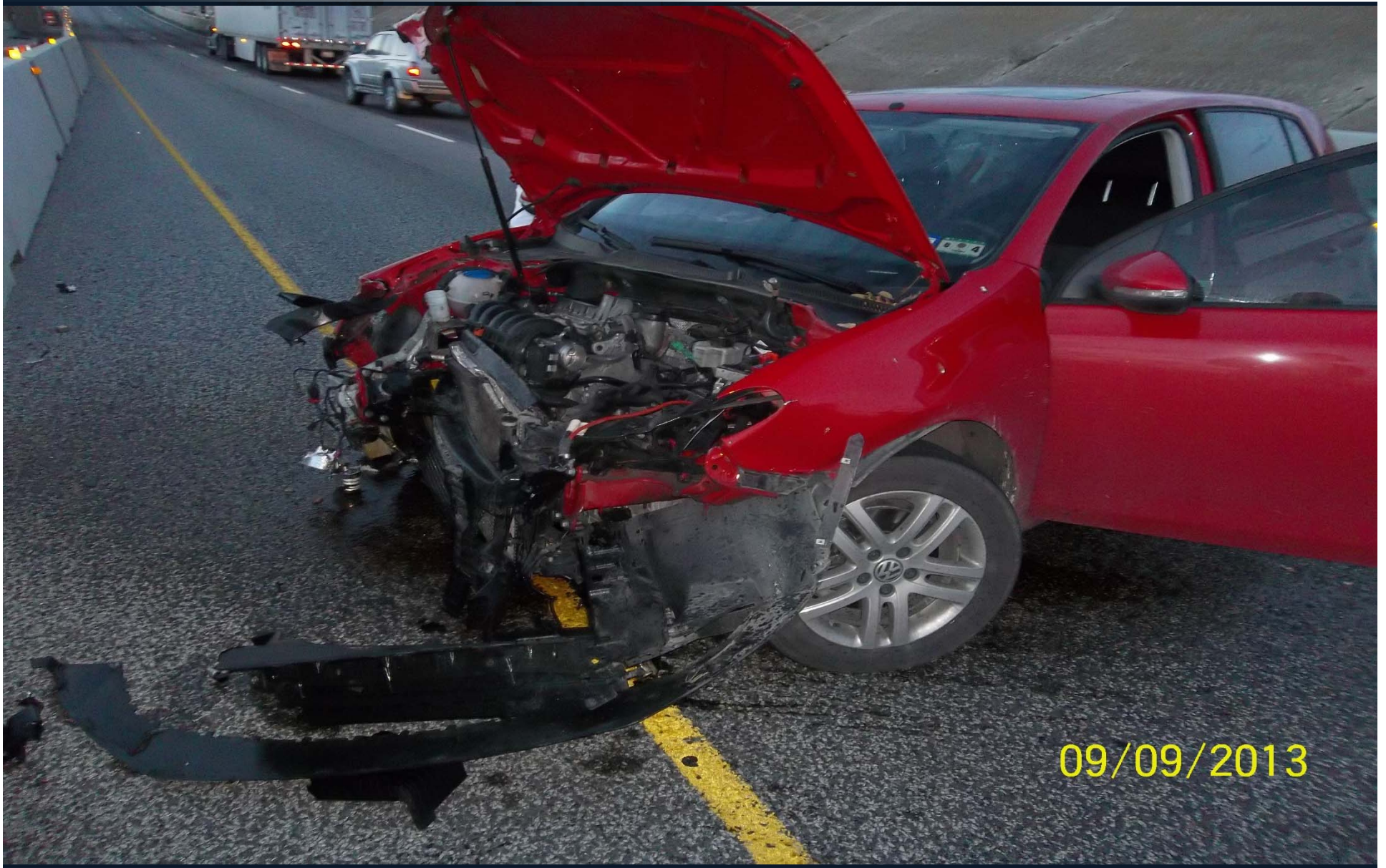














03/19/2013



10/30/2012









