



Houston-Galveston Area Council Metropolitan Planning Organization

TexITE Spring Meeting
April 9, 2026



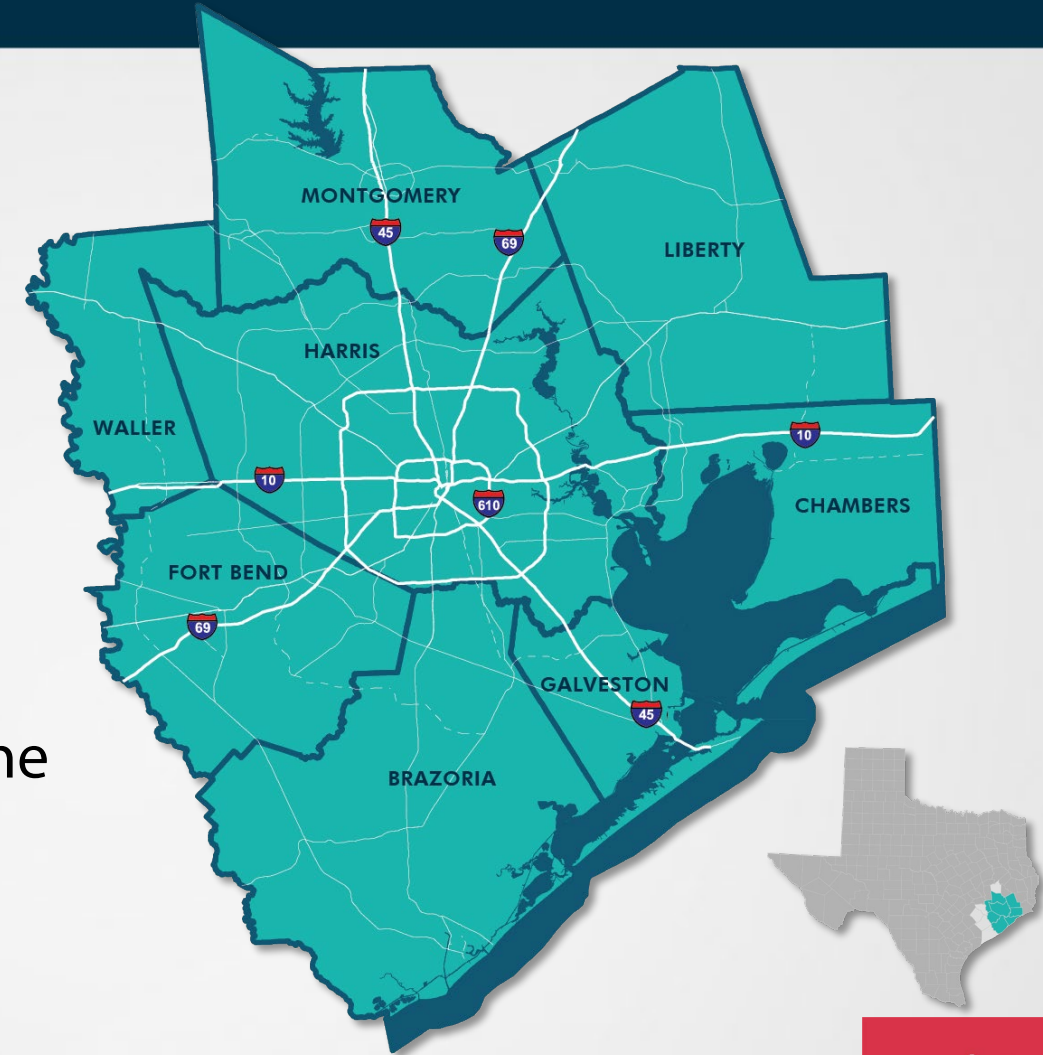
Regional Planning for Regional Issues

- Growth
- Congestion
- Safety

Metropolitan Planning Area Snapshot



- Eight counties, 134 cities
- 7.2 million people
- 320k employers
- 14 urban areas
- Two Transportation Management Areas
- 4 deep-water ports
- Air Quality Non-Attainment-O zone
- 32,425 road miles
- 1,400+ bikeway miles
- 21,525+ sidewalk miles

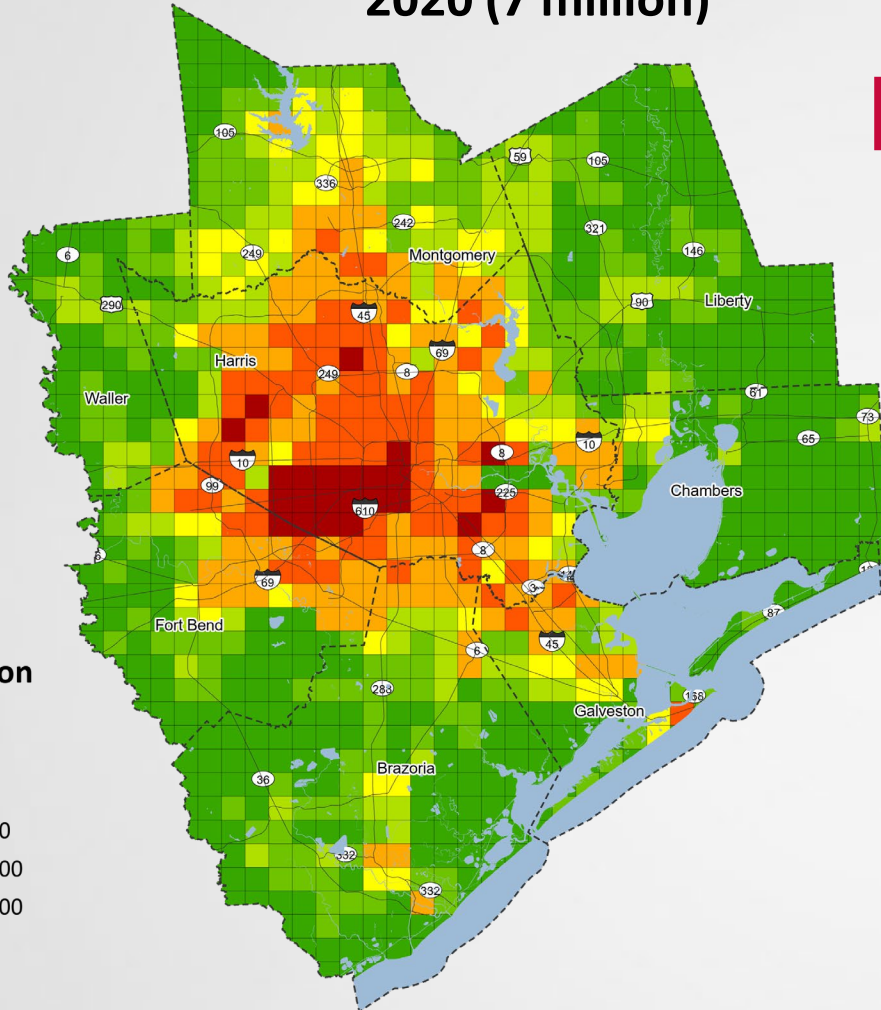


Planning Partners

- TxDOT
 - Transportation Planning and Programming Division
 - Transit Division
 - Houston District
 - Beaumont District
- 8 counties
- 134 cities
- 79 Management Districts and 24 Tax Increment Reinvestment Zones
- 10 transit providers
- 1 Transportation Management Organization - BayTran
- Citizen and stakeholder interest groups (36A, NHA, WHA, EED)
- Business groups (TAG, GHP)
- Toll road authorities
- Airports
- Marine ports
- Railroads
- Public

2050 Population Forecast

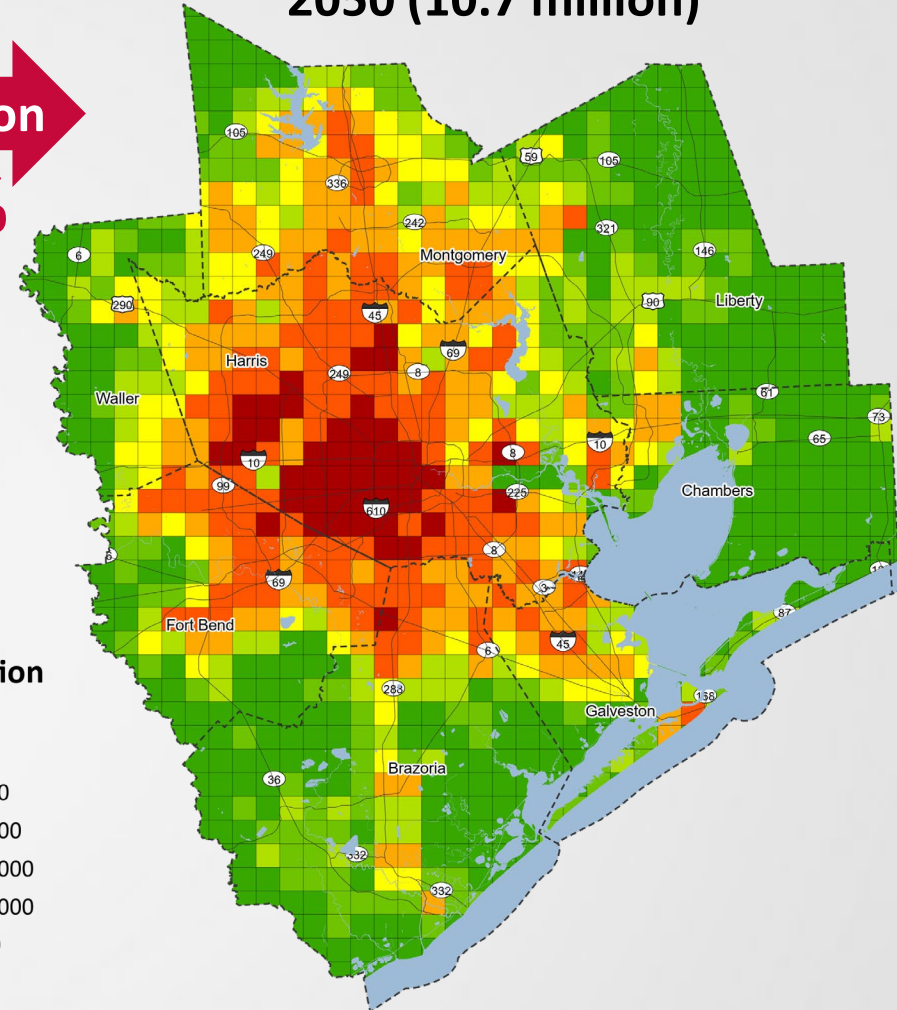
2020 (7 million)



2020 Population



2050 (10.7 million)



2050 Population

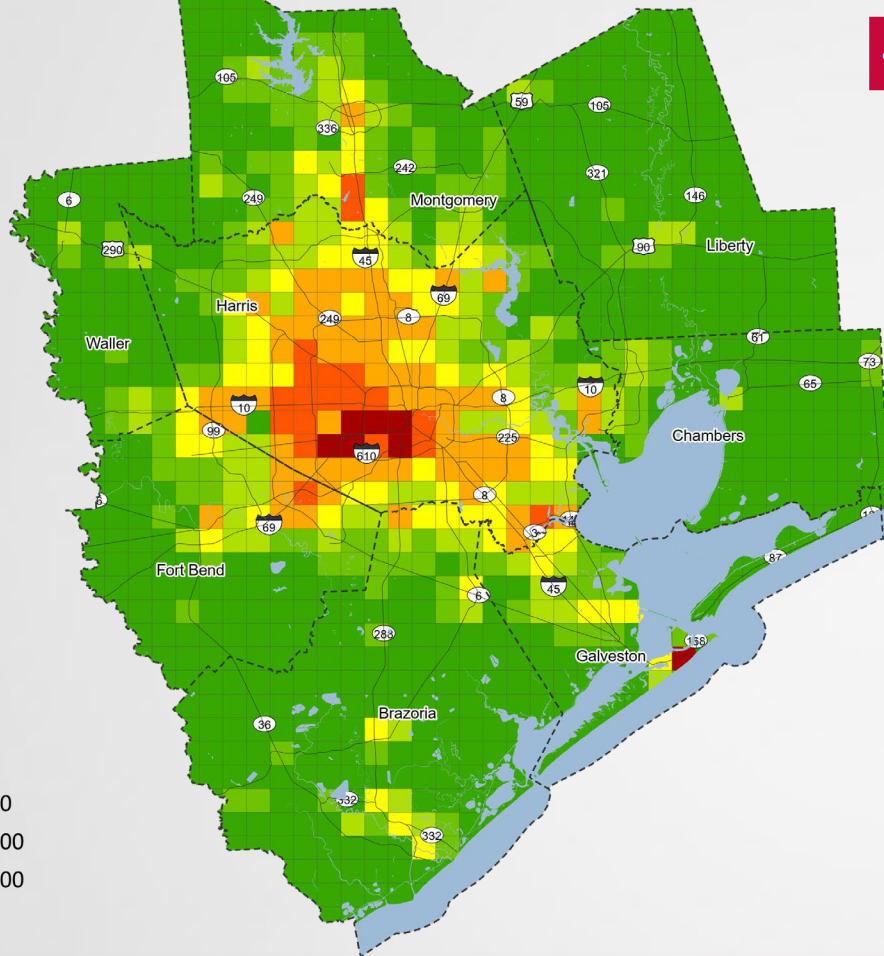


+ 3.7 million

↑ 53%

2050 Employment Forecast

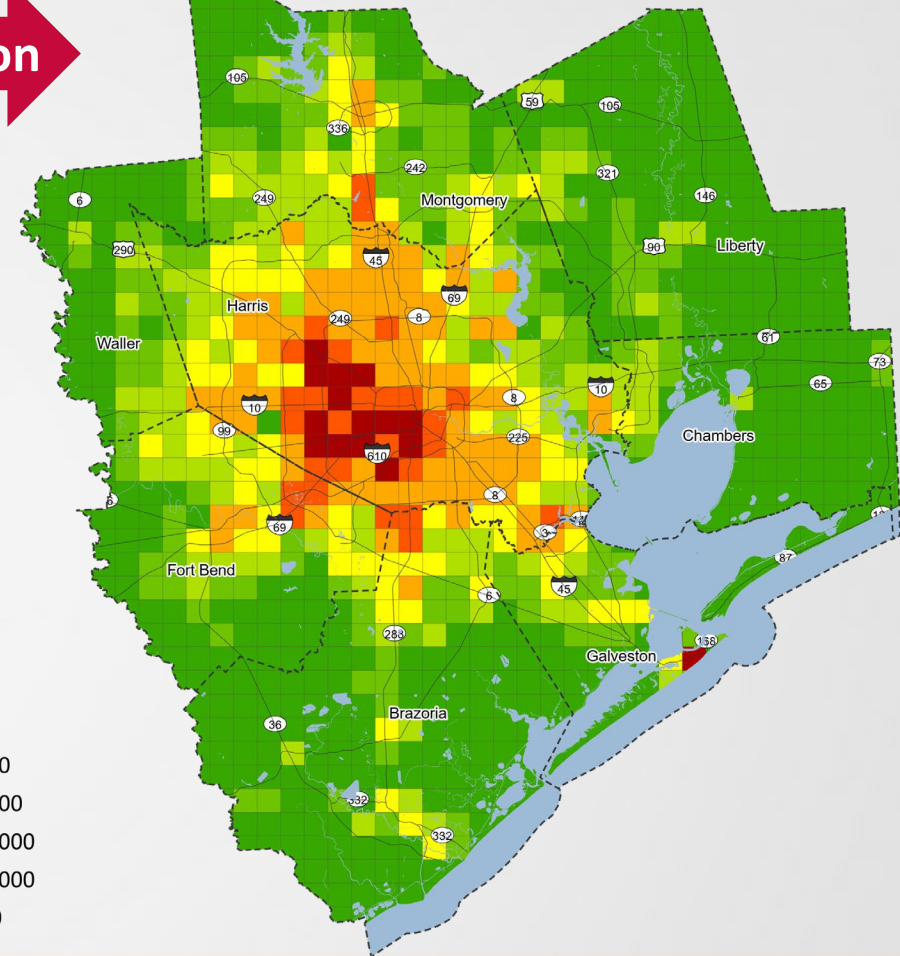
2020 (3.3 million)



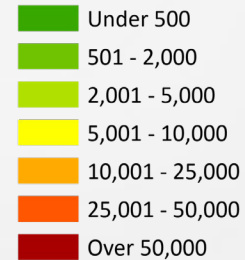
2020 Jobs



2050 (4.9 million)



2050 Jobs



+ 1.6 million

↑ 48%

Congestion

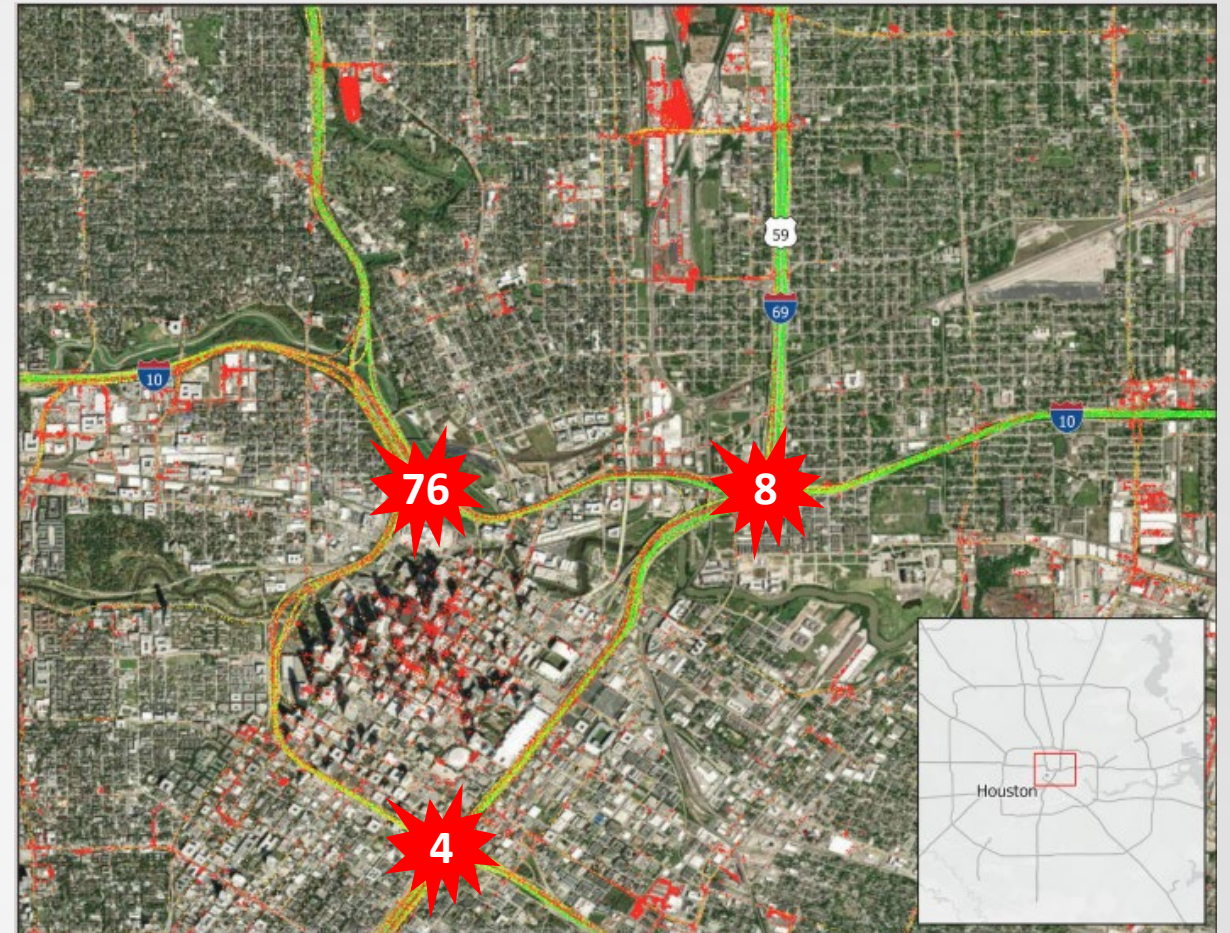
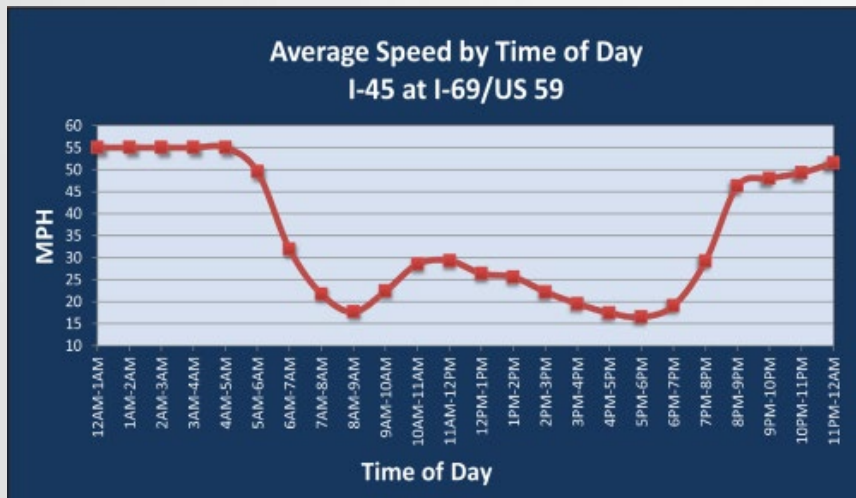


- Region has 7 of top 10 and 33 of top 100 most congested segments in the state
- I-610 (US290 – I-69) is the most congested roadway segment in the state
- Delay increased 20.9% over the prior year
- Congestion cost the region \$4B+

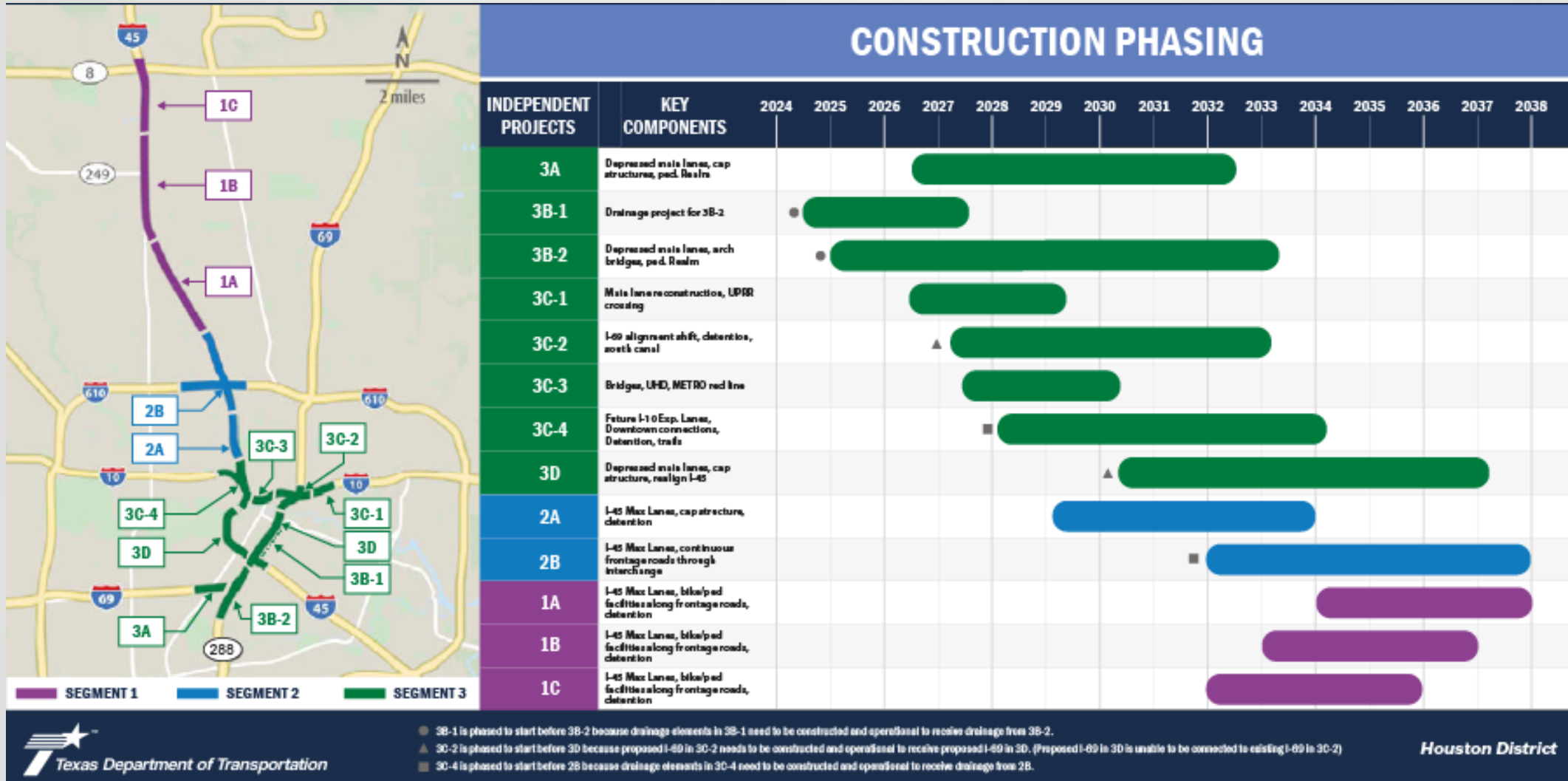
*2025 TTI Top 100 segments Report

Freight Congestion

- 2026 Top100 Truck Bottlenecks, American Transportation Research Institute
 - 2 of top 10 (# 4 and # 8)
 - 8 of top 100

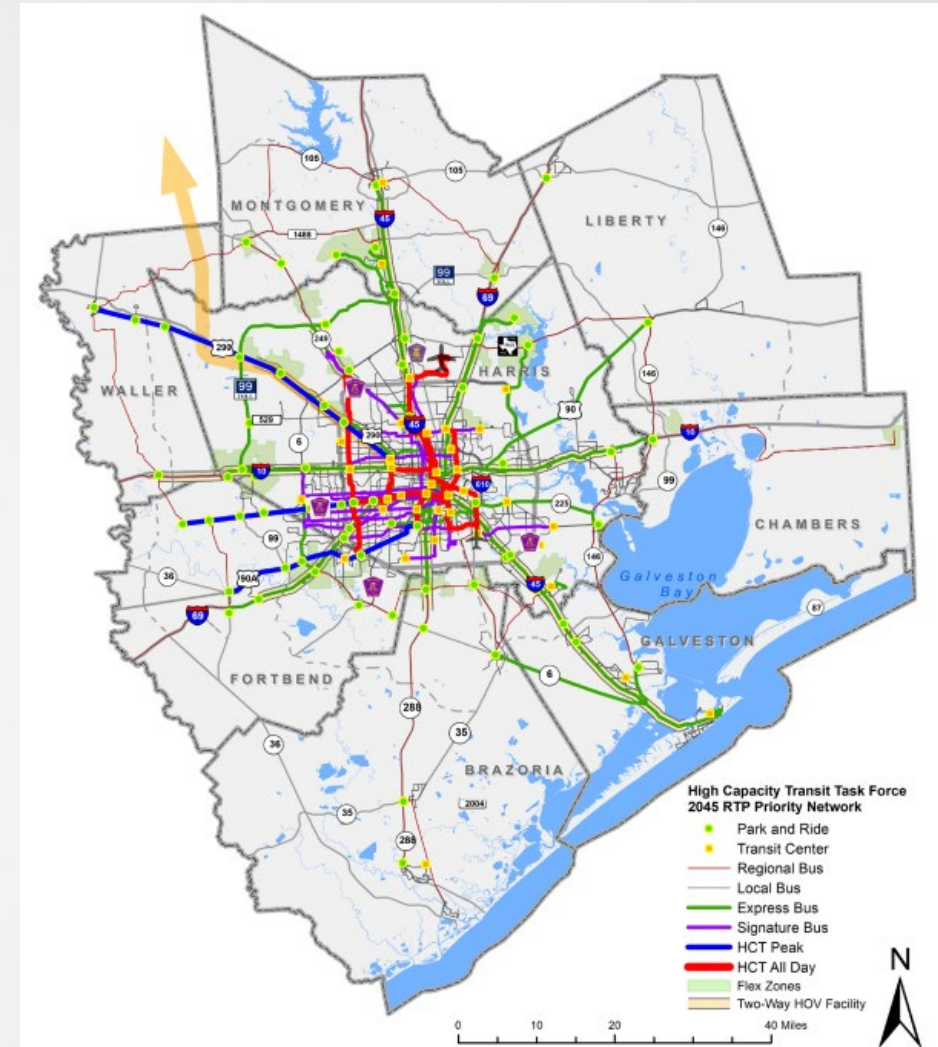


North Houston Highway Improvement Project (NHHIP)



High-Capacity Transit

- New local, high-capacity, and express bus transit services
- Expand access to suburban employment centers
- Regional Seamless Fare System
- Transit-Oriented Development
- First/Last Mile connections



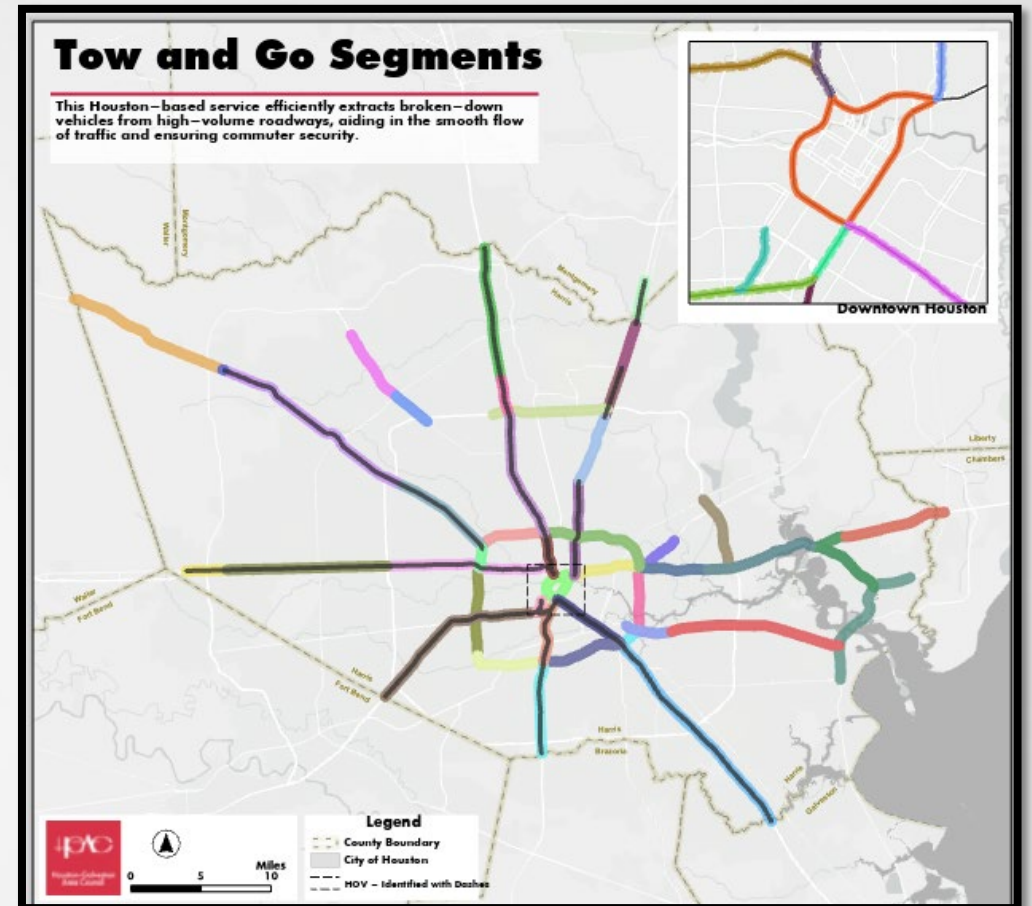
At-Grade Railroad Crossings

- 1,100 public at grade crossings
- Texas leads the nation for reported blocked crossings
- 7,383 reports from Nov 2024 to Nov 2025
- Our region believed to have the most at grade crossings in the nation
- Regional Rail Crossing Program



Tow and Go Program

- 250 freeway miles across Harris County
- No-cost tows for stalls and mechanical failures
- 24-hour, 7-day service
- Over 63,000 incidents in 2025
 - 39,400 no-cost tows
 - 8,500 paid tows
 - 15,602 “non-tows”



Safety Crisis

- 4th Quarter 2024
 - 47,000 crashes
 - 1,000 serious injuries
 - 200 fatalities

- 2025: 810 fatalities

Safety Action Plan

Comprehensive strategy to reduce fatal and serious injury crashes throughout the region.

- Regional Safety Action Plan
- 11 local Safety Action Plans
 - City of Conroe
 - City of League City
 - City of Sugarland
 - City of Friendswood
 - City of Missouri City
 - City of Galveston
 - City of La Marque
 - City of Pearland
 - Waller County
 - Gulf Coast Rail District
 - METRO

Regional Transportation Plan (RTP)

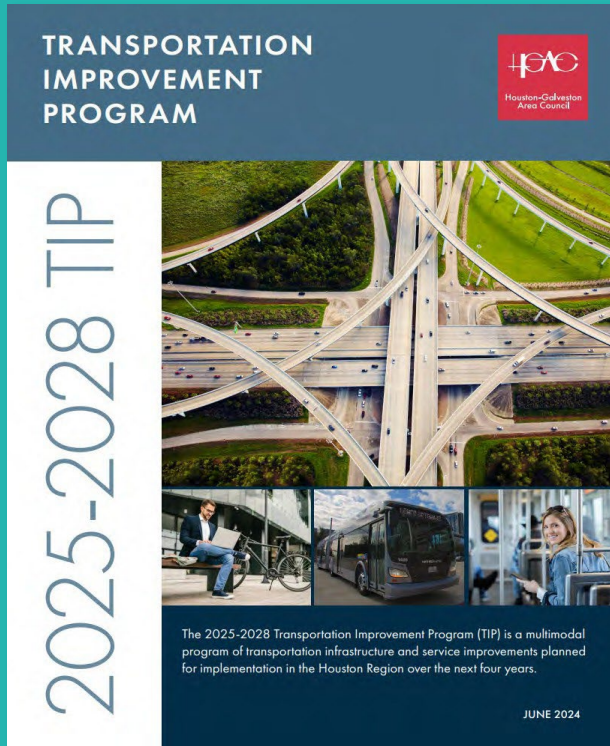


\$118 Billion*
1,000+ Projects

*June 1, 2025 estimate

- Improve safety.
- Achieve and maintain a state of good repair.
- Move people and goods reliably and efficiently.
- Strengthen regional economic competitiveness.
- Conserve and protect natural and cultural resources.

Transportation Improvement Program



\$18.7 Billion
600 Projects

- MPO/TPC has primary responsibility for directing project selection under certain categories:
 - Category 2 – Metropolitan and Urban Corridor Projects
 - Category 5 – Congestion Mitigation and Air Quality (CMAQ)
 - Category 7 – Surface Transportation Block Grant (STBG) Program
 - Category 9 – Transportation Alternatives Set-Aside Program (TASA)
 - Category 10 – Carbon Reduction Program (CRP)
- All federal funding and all “regionally significant” projects

FIFA World Cup Coordination

- June 11-July 19 Fan Fest
- 7 matches
- ~ 500K People
 - 54% International
 - 41% Speak English
- Simultaneous Events
 - Astros games
 - 4th of July
- Host committee and regional transportation partners
- Scenario planning and evaluation
- Special event transit and transportation services
- Travel demand management

FIFA - Travel Demand Management

HOUSTON
GALVESTON
AREA
COUNCIL

Commute
Solutions



LIFTOFF

to a better commute!

Beat the traffic game with smart commute options, planning tools, and high-traffic day insights — designed for employers and commuters.

[Build Your Commute Plan](#)

[Employer Toolkit Download](#)

Call to Action

- Design matters
- Don't lose the forest for the trees
- Make a difference every day