



Data-Powered Accessibility

Austin's Innovative Method For Targeting ADA
Improvements Where They're Needed Most

Presenters

Jetal Bhakta

City of Austin | Pedestrian Crossings Program Manager

Marcela Aguirre

DKS Associates | Senior Transportation Planner

What is the ADA?

- Americans with Disabilities Act (ADA) - Civil Rights Law
- Signed on July 26, 1990
- Ensures access for people with disabilities
- Requires public infrastructure to be accessible



What is an ADA Transition Plan?



- A required government document - Title II of ADA for public agencies
- Identifies barriers that make it hard for people with disabilities to access places
- Includes plans, estimates, and timelines for fixing these barriers and improving accessibility
- Helps cities like Austin offer safe and fair access to the public right of way.

ADA Transition Plan for Pedestrian Crossings

- Awarded 2023 Safe Streets and Roads for All (SS4A) Grant through Federal Highway Administration (FHWA)
 - \$288K federal award for planning study
 - Must complete within 2 years from signed grant agreement
- Existing ADA Transition Plan for Sidewalks Program
- Limited examples of transition plans for pedestrian crossings nationwide



Representative Sample Size Selection



| PEDESTRIAN CROSSING COMPONENT | EXISTING COUNT | SAMPLING RATE | TARGET # OF SELF-EVALUATIONS |
|---|----------------|---------------|------------------------------|
| SIGNALIZED INTERSECTIONS | 1,092 | 3% | 33 |
| PEDESTRIAN HYBRID BEACONS (PHB) | 122 | 5% | 6 |
| AUDIBLE PEDESTRIAN SIGNALS (APS) | 544 | 5% | 27 |
| CROSSWALKS | 6,686 | 3% | 201 |
| CONCRETE PEDESTRIAN ISLANDS | 316 | 5% | 16 |
| FLEXPOST PEDESTRIAN ISLANDS | 130 | 5% | 7 |
| RECTANGULAR RAPID FLASHING BEACONS (RRFB) | 19 | 5% | 1 |
| MIDBLOCK CROSSING LOCATIONS | 162 | 5% | 8 |
| MIDBLOCK CURB RAMPS | 1,210 | 5% | 61 |
| TOTAL | 10,281 | — | 360 |

Community Outreach

- Focus on targeted outreach for individuals identifying with disabilities and who need removal of barriers for access
 - Nearly 60% of identified locations for analysis came through outreach efforts

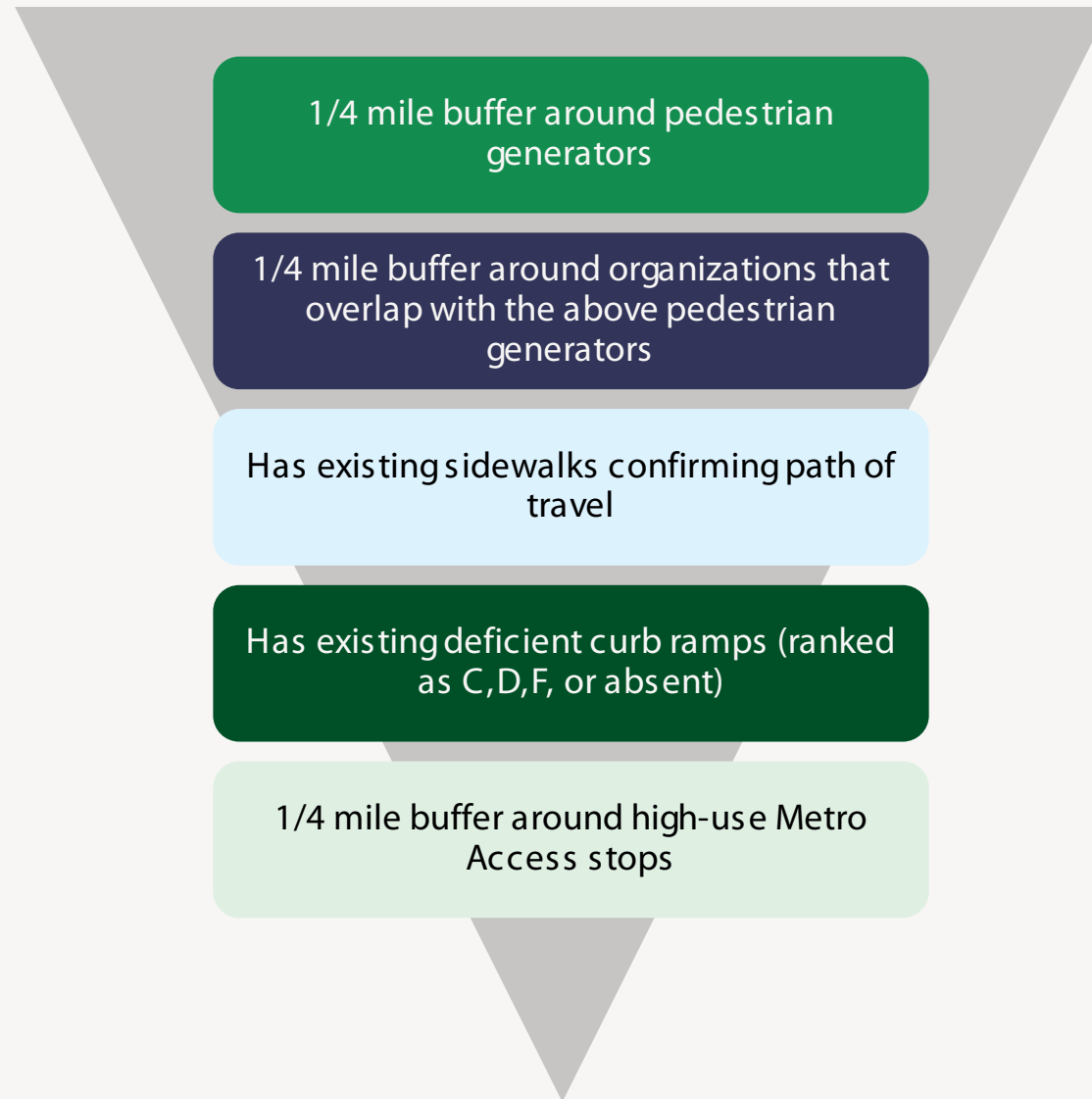


Site Selection – Partial List

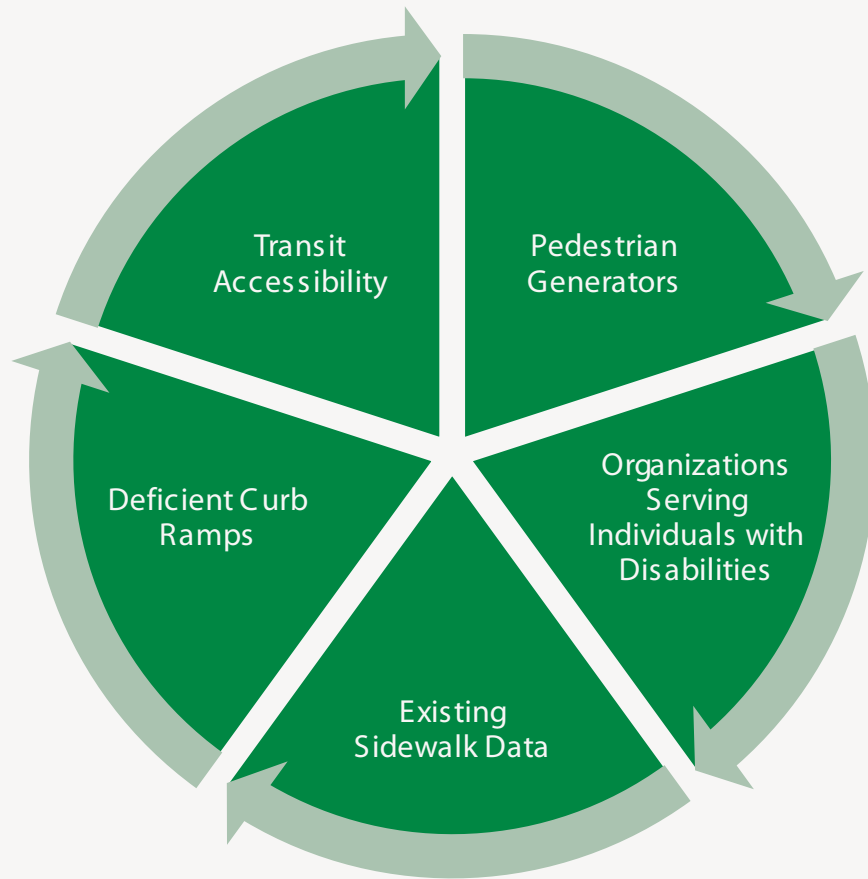


| PEDESTRIAN CROSSING COMPONENT | TARGET # OF SELF-EVALUATIONS | COMPONENTS SELECTED THROUGH PUBLIC OUTREACH | ADDITIONAL COMPONENTS NEEDED |
|---|------------------------------|---|------------------------------|
| SIGNALIZED INTERSECTIONS | 33 | 33 | 0 |
| PEDESTRIAN HYBRID BEACONS (PHB) | 6 | 3 | 3 |
| AUDIBLE PEDESTRIAN SIGNALS (APS) | 27 | 17 | 10 |
| CROSSWALKS | 201 | 140 | 61 |
| CONCRETE PEDESTRIAN ISLANDS | 16 | 7 | 9 |
| FLEXPOST PEDESTRIAN ISLANDS | 7 | 1 | 6 |
| RECTANGULAR RAPID FLASHING BEACONS (RRFB) | 1 | 0 | 1 |
| MIDBLOCK CROSSING LOCATIONS | 8 | 3 | 5 |
| MIDBLOCK CURB RAMPS | 61 | 4 | 57 |
| TOTAL | 360 | 208 | 152 |

Site Selection Framework



Network Context & GIS Analysis



- Supplemented the list of components using network context and GIS analysis to meet the target number of self-evaluations

GIS Database

Pedestrian Generators

- Schools
- Parks
- Trails
- Commercial Areas
- Hospitals
- Libraries
- Senior Centers

Locations of Organizations Serving People with Disabilities

- Austin Lighthouse for the Blind
- Texas School for the Blind and Visually Impaired
- ADAPT
- Texas School for the Deaf
- Chris Cole Center
- McBeth Recreation Center

Existing Sidewalks

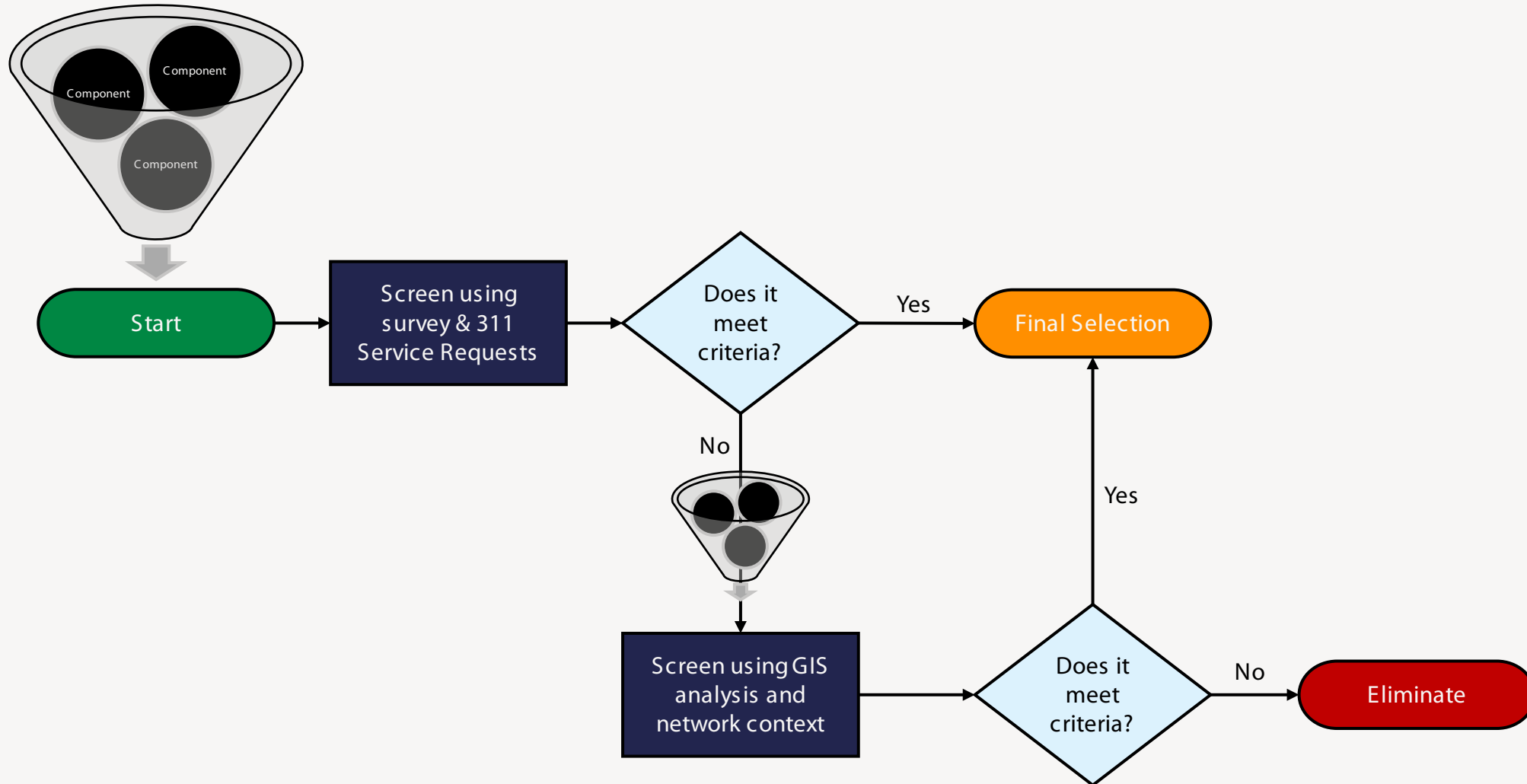
Existing Curb Ramps

- Ramps rated C, D, or F, reflecting a higher degree of accessibility barriers, were prioritized

Metro Access

- High-use stops identified from 6 months of trip data

GIS Analysis Workflow

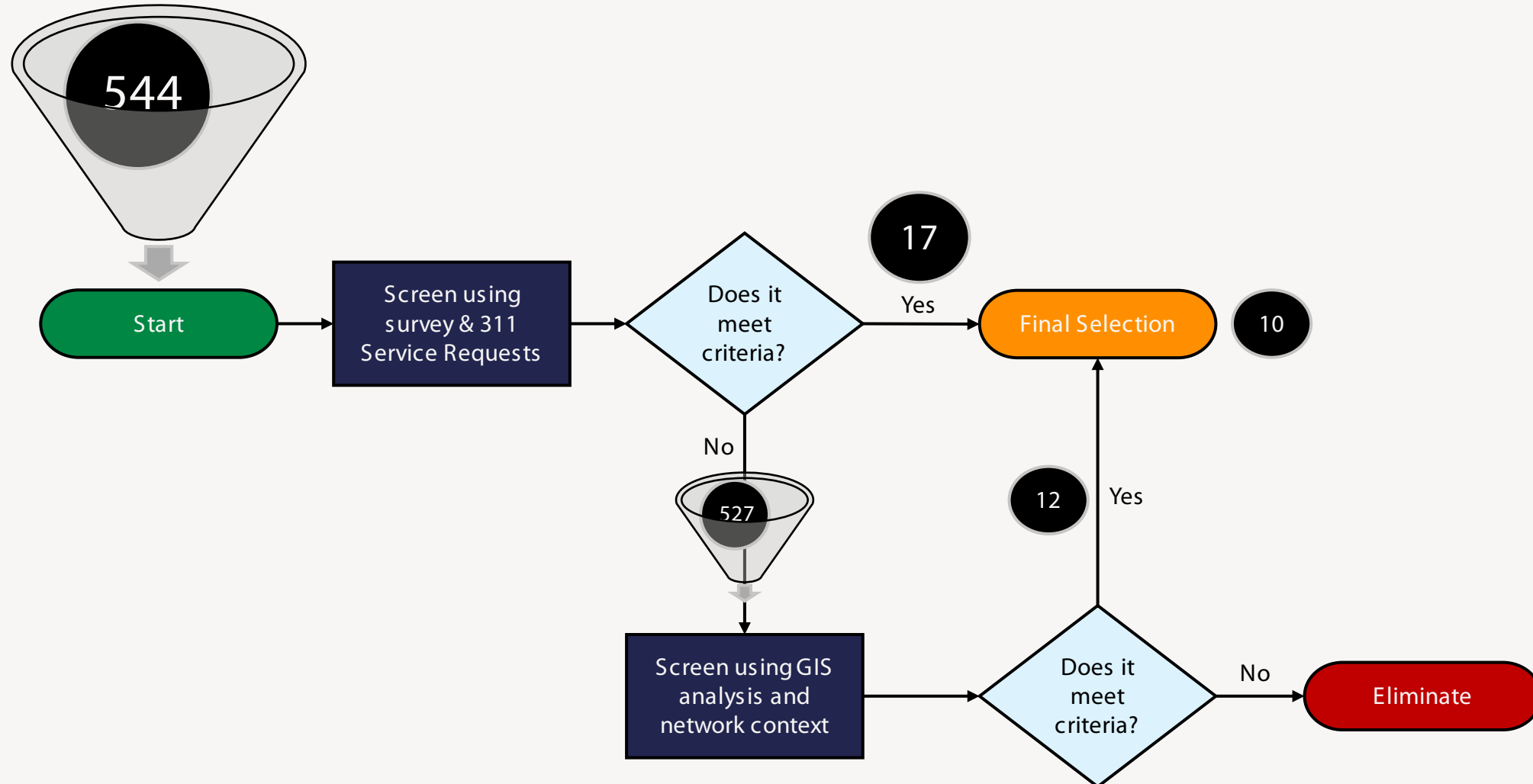


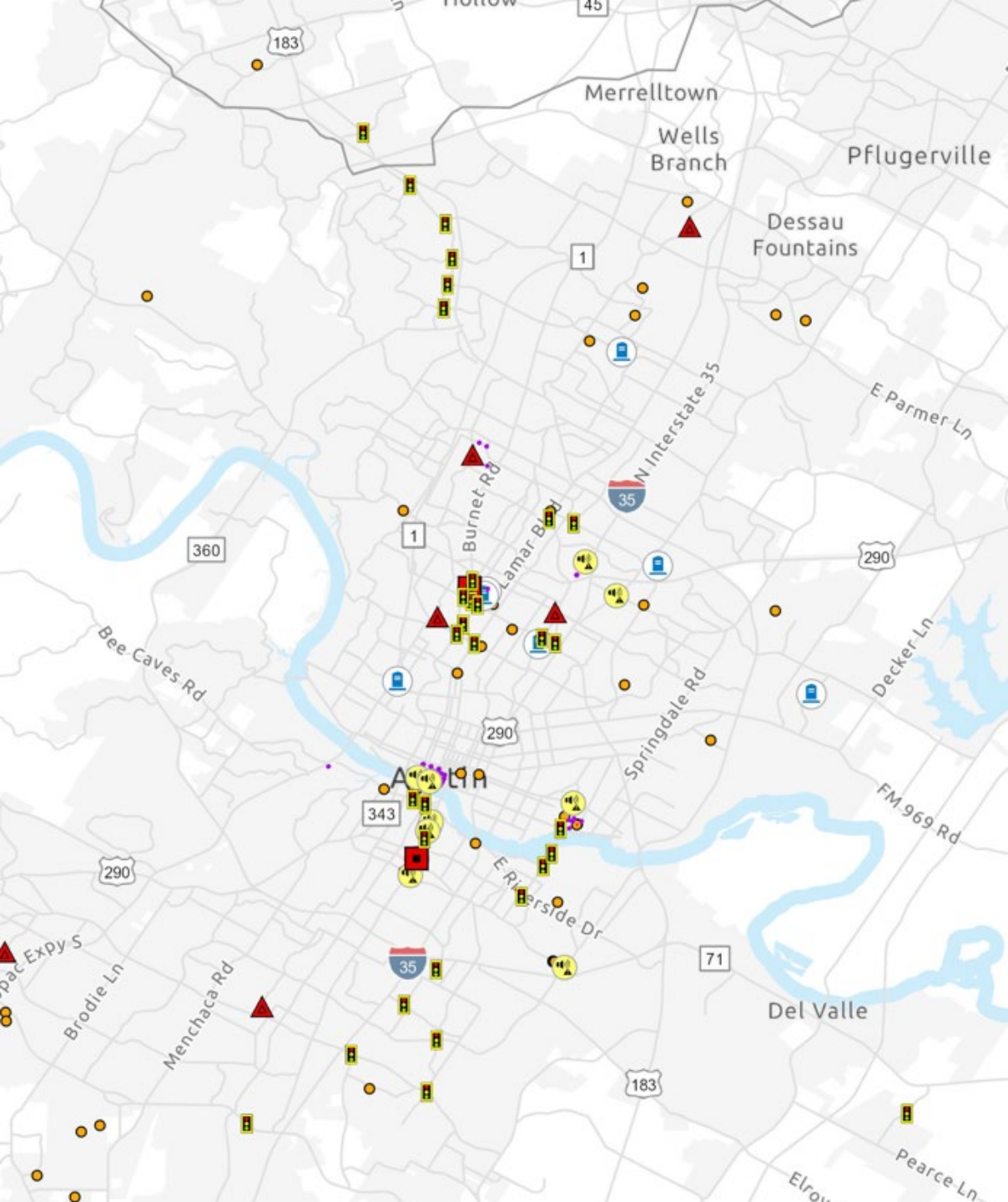
Example – Audible Pedestrian Signals (APS)



| PEDESTRIAN CROSSING COMPONENT | EXISTING COUNT | SAMPLING RATE | TARGET # OF SELF-EVALUATIONS |
|---|----------------|---------------|------------------------------|
| SIGNALIZED INTERSECTIONS | 1,092 | 3% | 33 |
| PEDESTRIAN HYBRID BEACONS (PHB) | 122 | 5% | 6 |
| AUDIBLE PEDESTRIAN SIGNALS (APS) | 544 | 5% | 27 |
| CROSSWALKS | 6,686 | 3% | 201 |
| CONCRETE PEDESTRIAN ISLANDS | 316 | 5% | 16 |
| FLEXPOST PEDESTRIAN ISLANDS | 130 | 5% | 7 |
| RECTANGULAR RAPID FLASHING BEACONS (RRFB) | 19 | 5% | 1 |
| MIDBLOCK CROSSING LOCATIONS | 162 | 5% | 8 |
| MIDBLOCK CURB RAMPS | 1,210 | 5% | 61 |
| TOTAL | 10,281 | — | 360 |

Example – Audible Pedestrian Signals (APS)





Final Selection of Components

Project Timeline

- Project Kick Off (Apr 2025)
- Community Outreach (Jun - Aug 2025)
- Field Evaluations (Oct - Nov 2025)
- Plan Report (Dec 2025 – Apr 2026)
 - Currently working on final draft
 - Cost estimates
 - Prioritization

