

AI-Powered Video Analytics (AIVA) for Advancing TSMO

Transforming Existing CCTV Feeds into Proactive, Actionable System-Level Intelligence



TexITE Spring 2026 Meeting

Technical Session 3C – Using AI for Traffic Safety Improvements

Do Nam, Ph.D., P.E.

Director of Traffic | Minneapolis | WSB





WSB's AI-Powered Video Analytics (AIVA) Framework

Enabling multiple TSMO applications from high-resolution, lane-level vehicle trajectories

Leverages Existing Video Assets



- Existing CCTV (RTSP/IP)
- Portable traffic camera
- Drone



- ✓ Automated detection & classification
- ✓ Continuous lane-level trajectory tracking
- ✓ High-resolution data extraction using virtual detectors

I-10 EB at Washington Avenue - Houston, TX
Video Quality: SD, 640x480, 30 fps





I-694 Detector Health Assessment (Jan 2026 – Mar 2027)

Developing a scalable framework for lane-level detector performance evaluation using existing CCTVs

Project Corridor

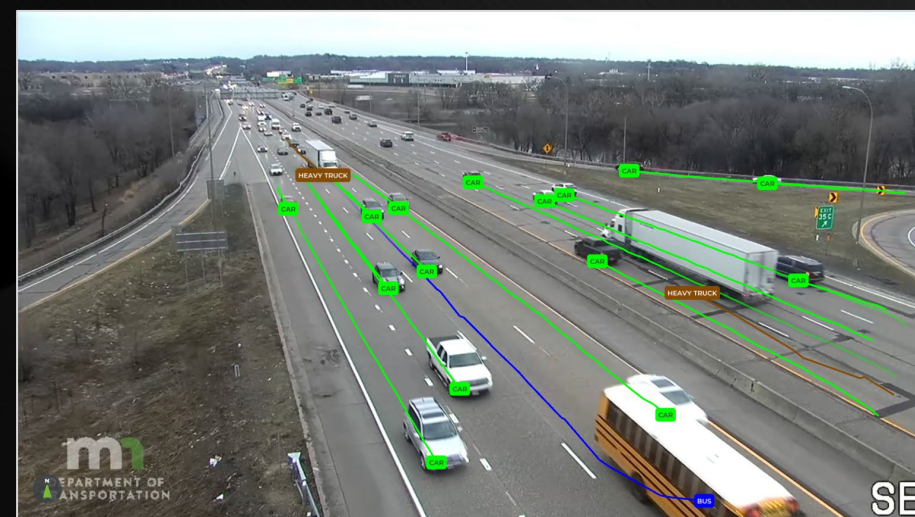
- I-694 : CR 81 (west) to Lexington Avenue (east)
- 125 lane-level detector channels
- 20 PTZ CCTVs

Project Datasets

- MnDOT PeMS detector data
- AIVA-derived video counts
- Independent 3-party manual reference counts

Evaluation Metric

- 15-minute lane-level mean absolute percentage difference (MAPD)



Lane-Level Vehicle Detection and Trajectory Extraction from MnDOT CCTV
I-694/I-94 Interchange – Minneapolis (RTSP, HD 1920x1080, 30 fps)



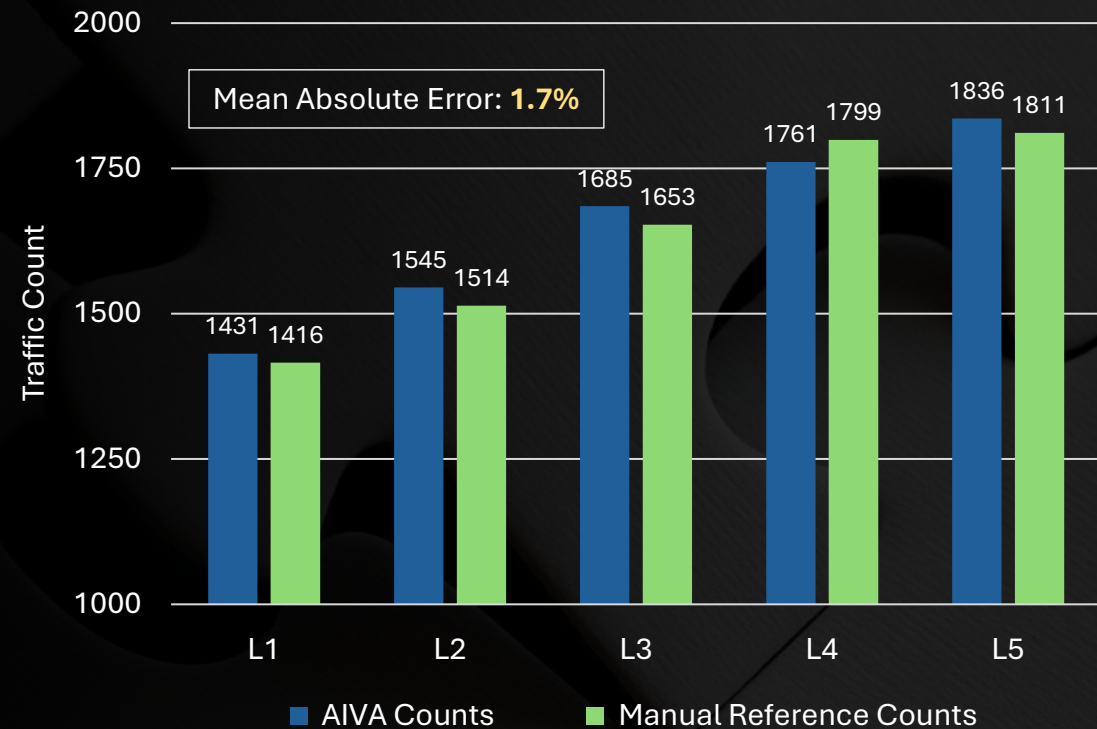
Lane-Level Detection Accuracy Validation

Lane-level errors < 2% across all lanes under daylight conditions | 5-lane urban freeway, peak hour



I-10 EB at Washington Avenue - Houston, TX

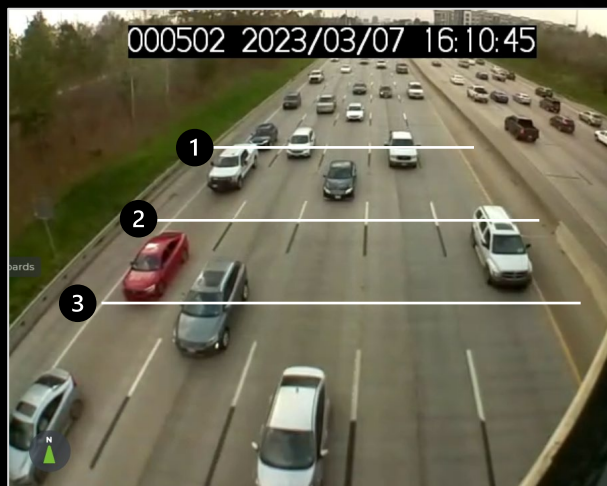
Lane Volume Comparison (4 – 5 PM)





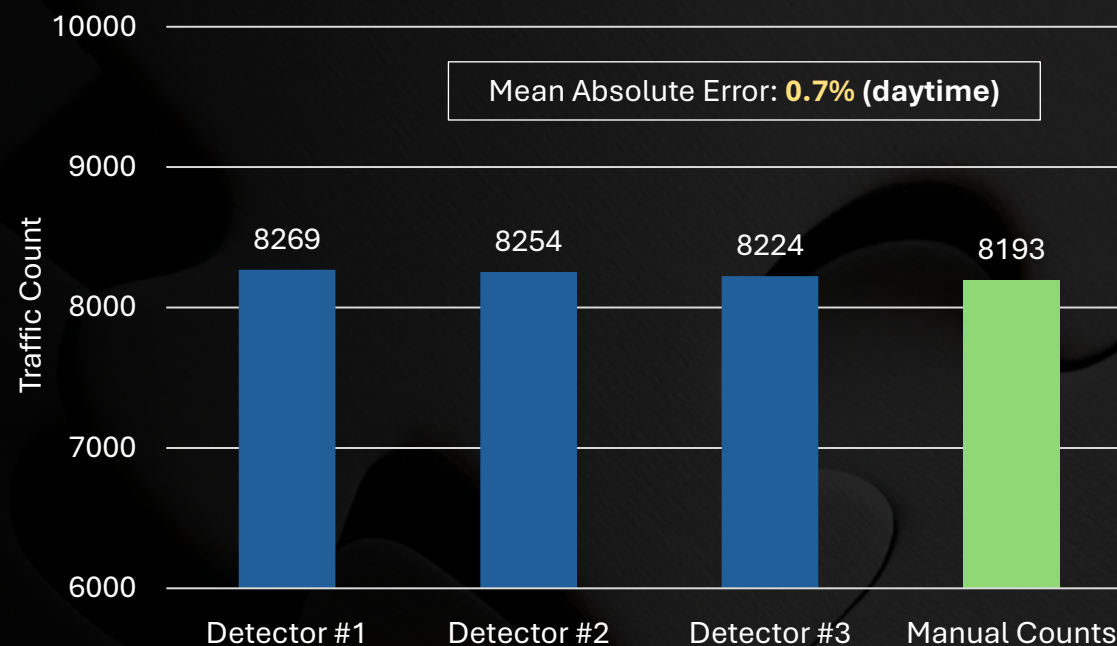
Detection Accuracy Stability Assessment

Stable detection performance without site-specific calibration



Three Virtual Detector Placements

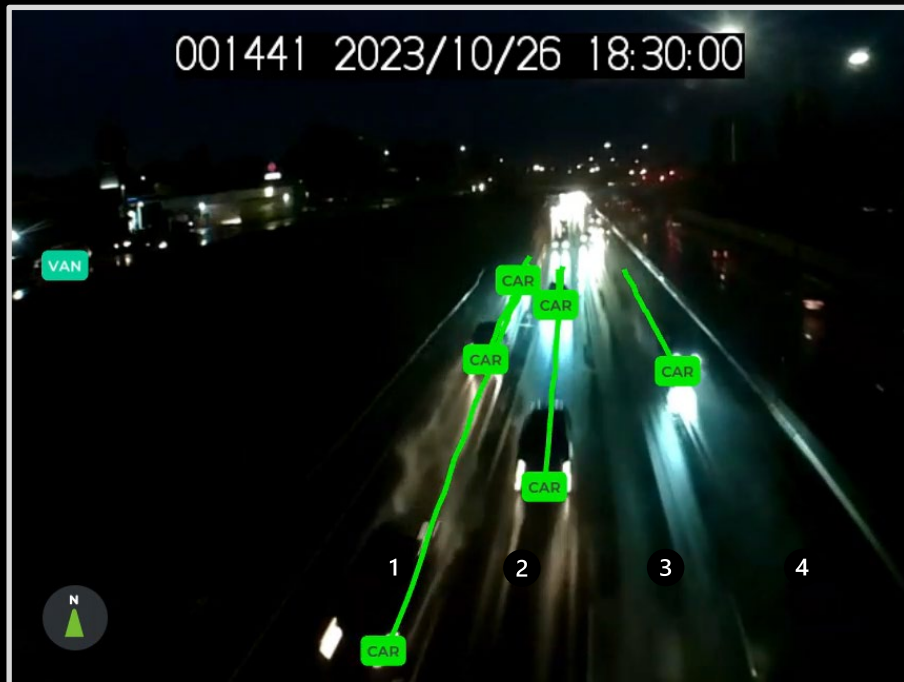
Link Volume Comparison (4 – 5 PM)





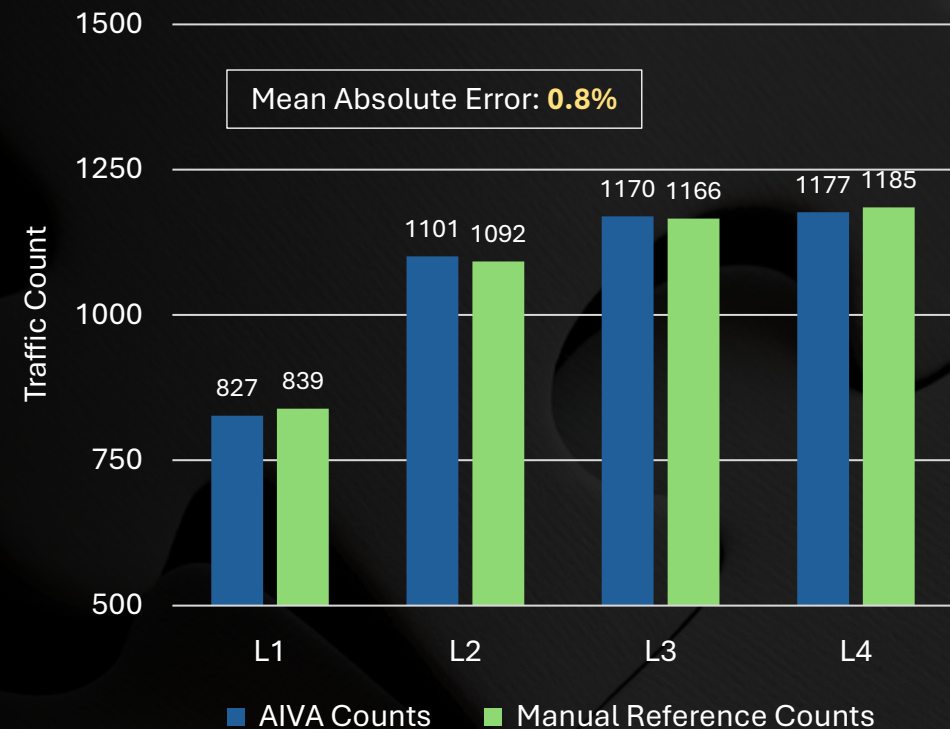
Robust Lane-Level Detection Accuracy Validation

Lane-level errors < 2% across all lanes under low-light, wet pavement conditions



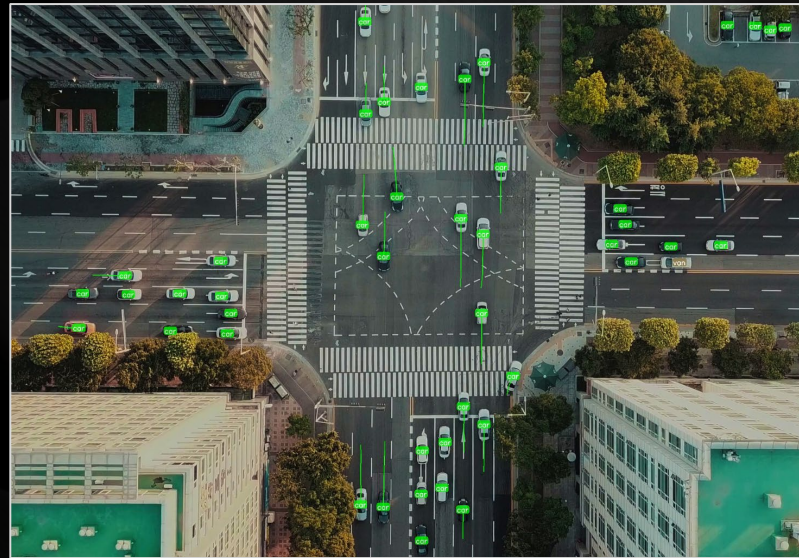
I-94 WB at 25th Avenue – Minneapolis, MN

Lane Volume Comparison (6 – 7 PM)





Measuring Traffic Flow Instability



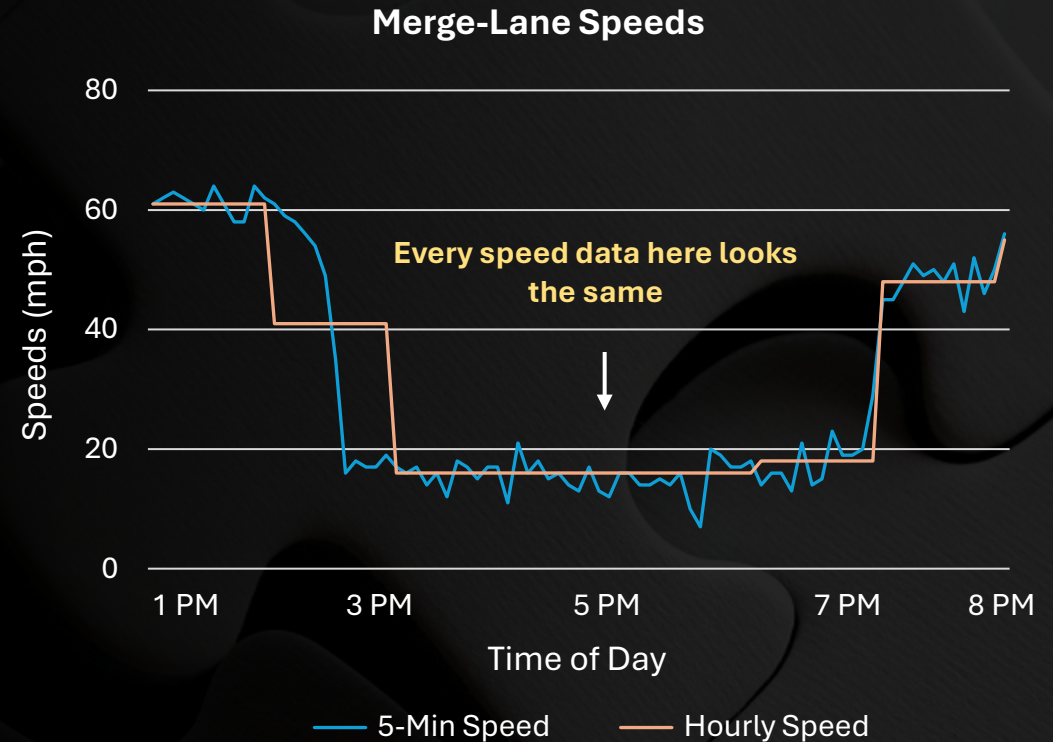


Measuring Traffic Flow Instability – Merge Operations

Speeds alone underrepresent instability in congestion – limiting proactive TSMO actions



Merge Lane Operations
I-94 WB at Chicago Avenue – Minneapolis, MN



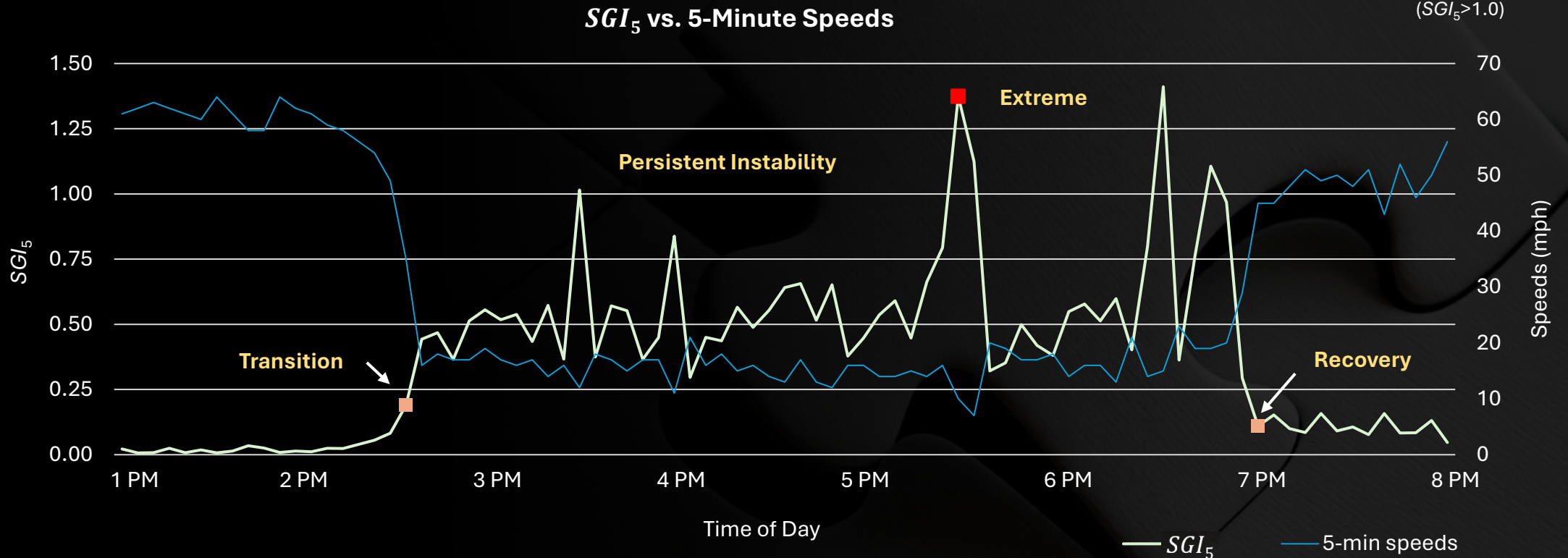


Stop-and-Go Index (SGI) – Merging Operations

A lane-level diagnostic measure of traffic flow instability



Extreme Instability at 5:25 PM
($SGI_5 > 1.0$)



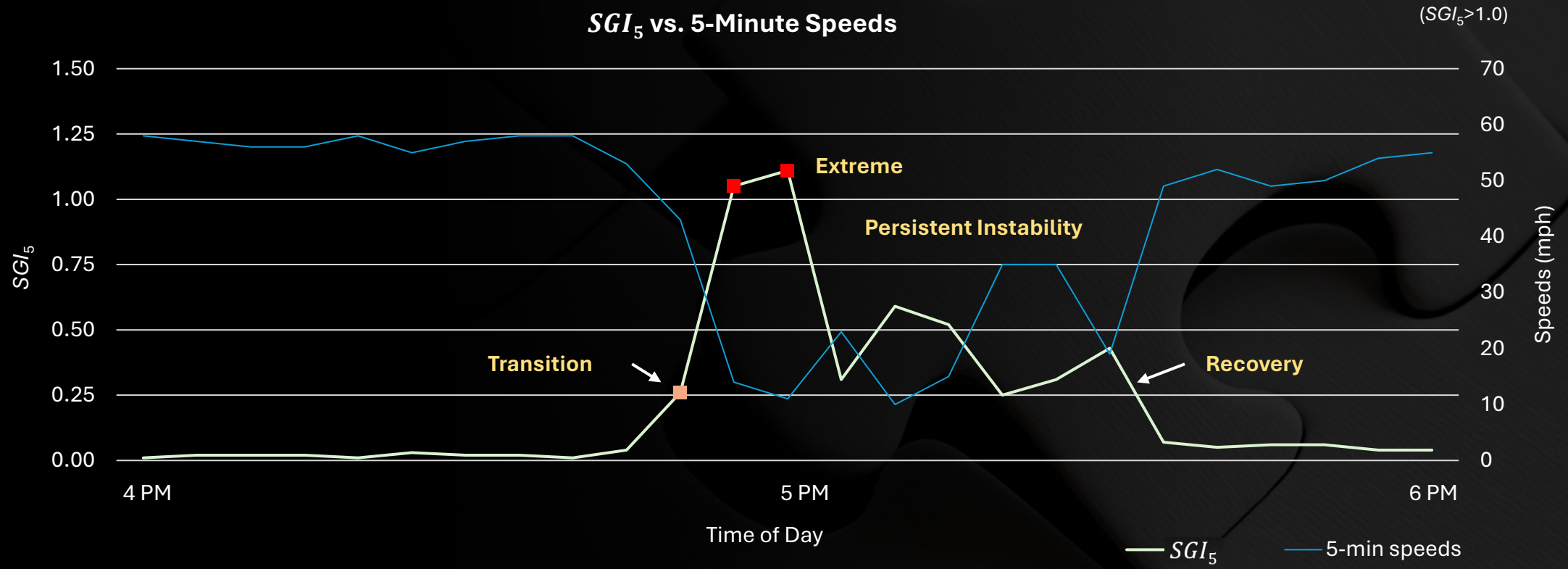


Stop-and-Go Index (SGI) – Weaving Operations

Tracking freeway weaving lane during PM peak hours



Extreme Instability at 5:00 PM ($SGI_5 > 1.0$)



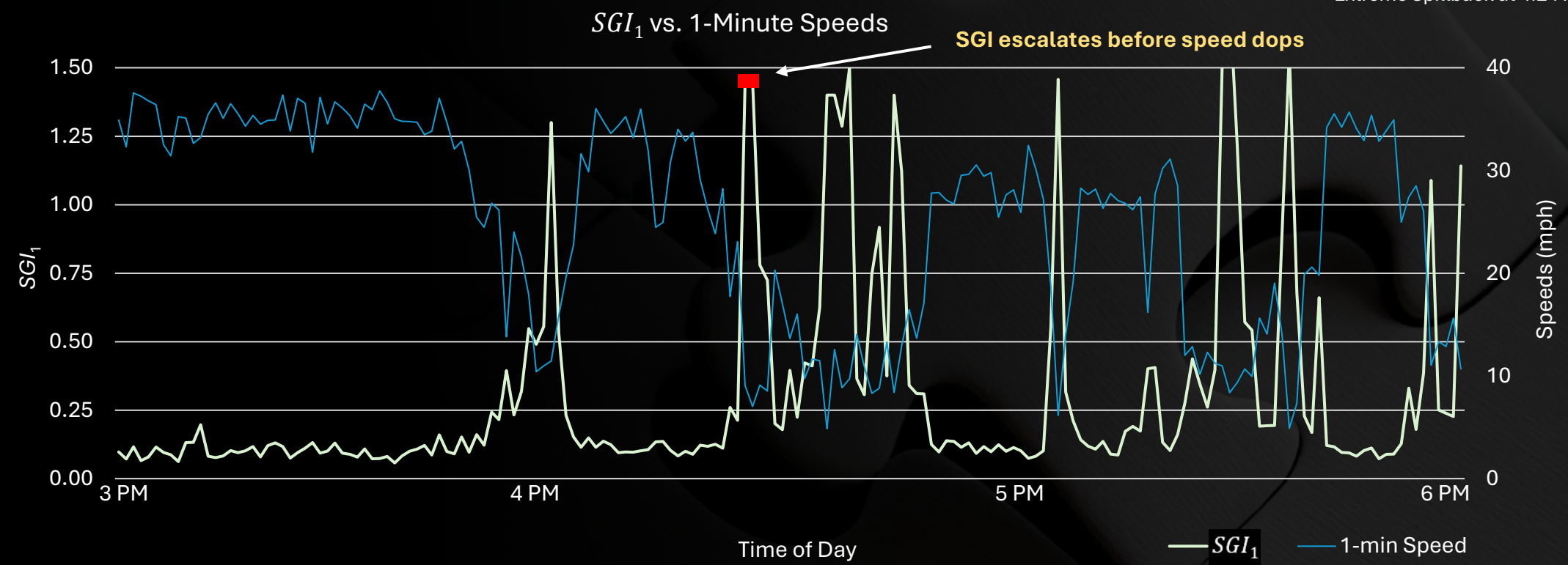


Stop-and-Go Index (SGI) – Off-Ramp Operations

One-minute SGI enables proactive spillback detection for operational risks



Extreme Spillback at 4:24 PM



Note: SGI values above 1.5 truncated for visualization clarity



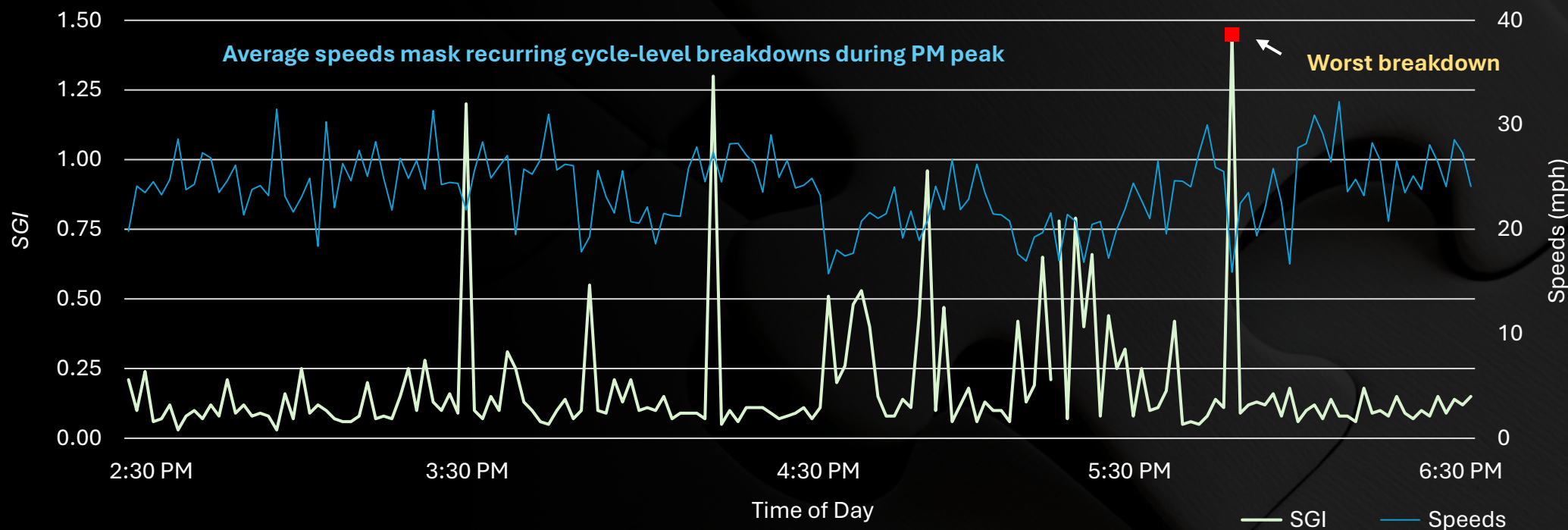
Stop-and-Go Index (SGI) – Ramp Junction Operations

Same SGI framework, aggregated at the signal-cycle level



Worst Breakdown at 5:50 PM

SGI vs. Speeds



Note: Each data point represents a signal cycle and SGI value above 1.5 truncated for visualization clarity

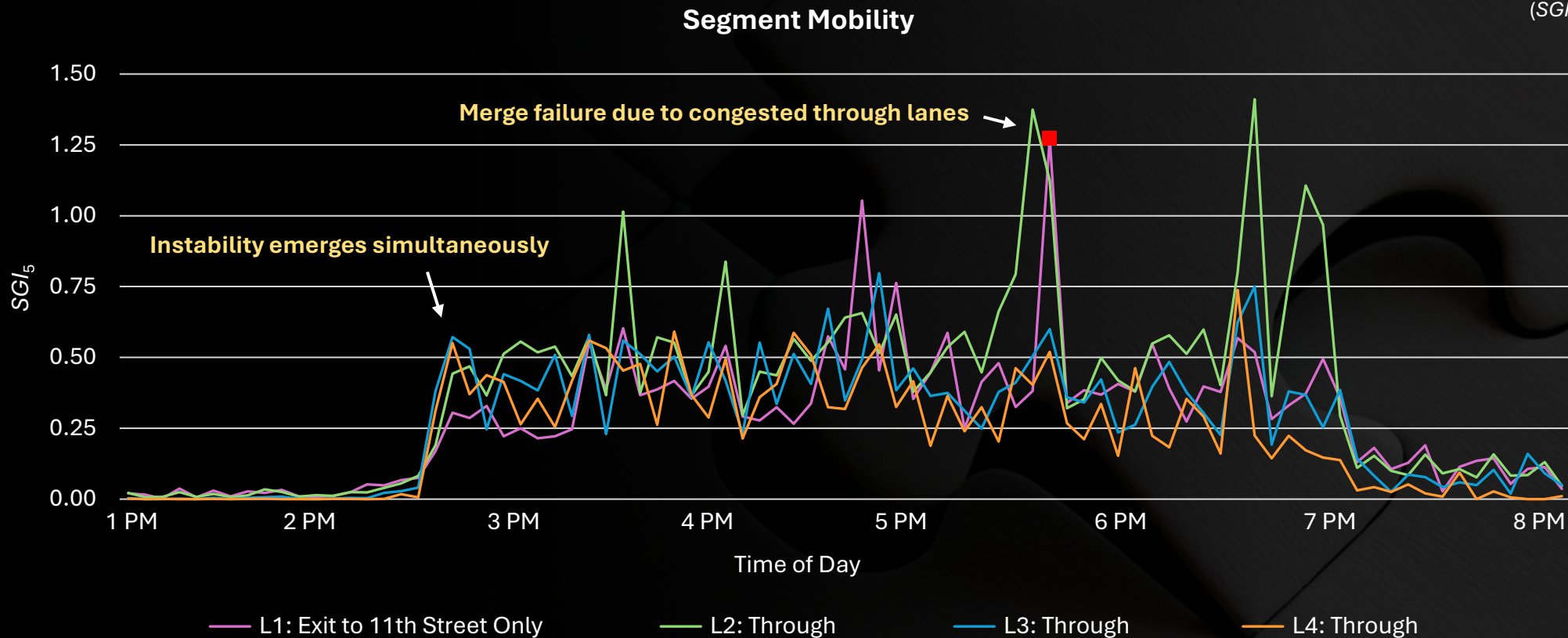


Measuring Segment Instability

Identifies potential operational risk under uneven lane-level performance



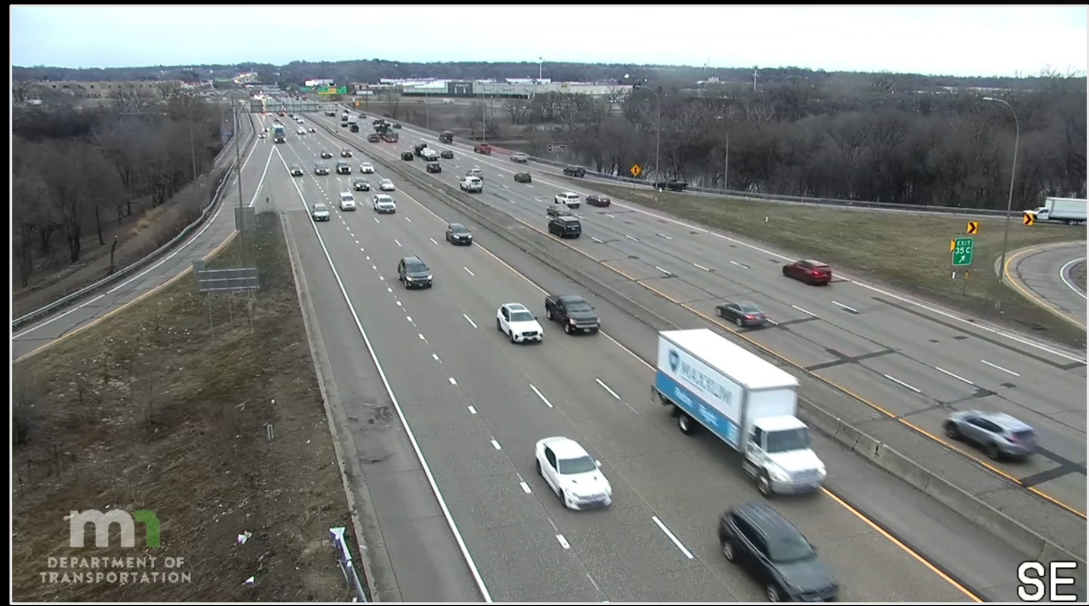
Exit lane instability at 5:30 PM
($SGI_5 > 1.0$)





Turning Existing CCTV into Powerful Traffic Sensors

Wide-area, high-resolution views enable multi-lane extraction for operations and safety insights



I-694/I-94 Interchange

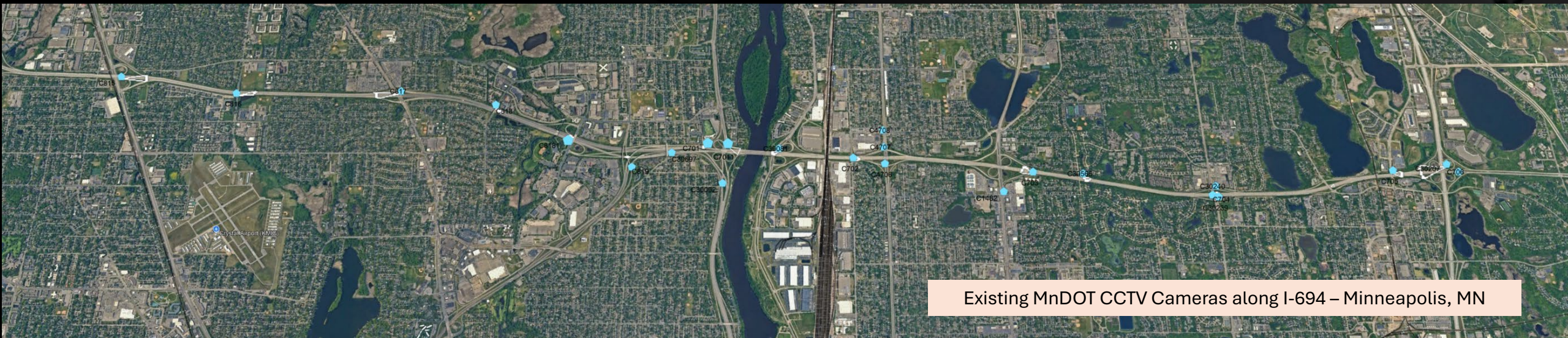


I-694/Brooklyn Blvd Ramp Junction



Scaling to Corridor Instability Diagnosis

- *> 98% lane-level detection accuracy without calibration*
- *Applicable to any roadway segment*
- *Applicable at any time interval and comparable across time scales*
- *Scalable using existing high-resolution CCTV infrastructure and portable cameras*



Existing MndOT CCTV Cameras along I-694 – Minneapolis, MN



Thank You
Questions?



Do Nam, Ph.D., P.E.
Director of Traffic
Email: dnam@wsbeng.com
Phone: 763.760.8090