

Complete Streets San Antonio

CSS Workshop

July 27, 2010

Today's Presentation



What are Complete Streets?

Complete Streets are safe and universally accessible for drivers, pedestrians, transit riders, and bicyclists – all users, regardless of age or ability.

Complete Streets Policy

A photograph of a city street scene. In the foreground, a person is riding a bicycle away from the camera. In the middle ground, a white bus with blue accents is driving. The background features trees, streetlights, and various banners, including one that says 'CALM'. A traffic light on the left shows a green light.

A complete streets policy ensures that the entire right of way is planned, designed, and operated to provide safe access for all users.

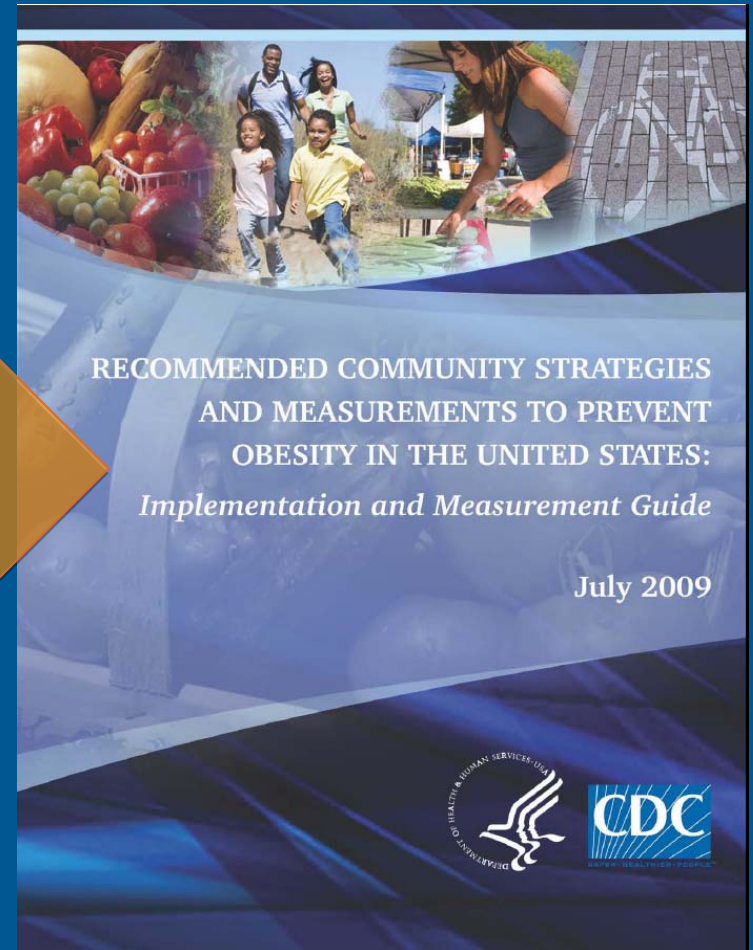
Why a Complete Streets Policy?

An aerial photograph of a suburban street. The road has multiple lanes with white lane markings. A white bus is in the right lane, moving away from the camera. Several cars are in the middle lanes. On the right side of the road, there is a green-painted area, likely a bike lane, with a white curb. The street is lined with trees and houses in the background. A blue banner at the top contains the title, and an orange arrow-shaped box on the left contains the text.

Public health benefits
More safe travel options
Systematic consideration of
all users' needs

Public Health Benefits

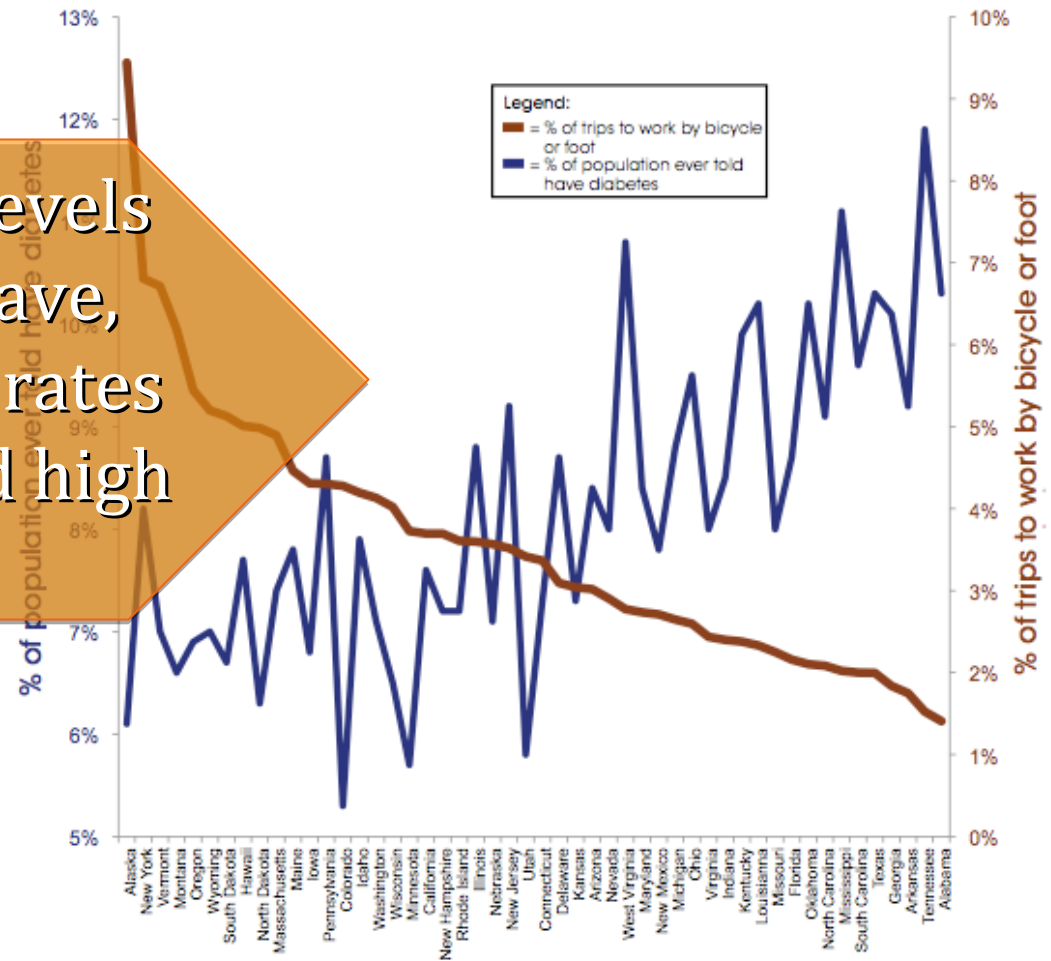
The Centers for Disease Control and Prevention recently named adoption of Complete Streets policies as a recommended strategy to prevent obesity.



Public Health Benefits

States with the lowest levels of biking and walking have, on average, the highest rates of obesity, diabetes, and high blood pressure.

Comparing Bicycling and Walking to Diabetes Rates in 50 States



Public Health Benefits

More than 1/3 of our nation's children are overweight or obese.

Limited physical activity contributes to the obesity epidemic among children.

Streets that provide dedicated space for bicycling and walking help kids be physically active and gain independence.



More safe travel options



Complete streets create more travel choices, and make it safer to choose to walk or bike

More safe travel options

Residents are 65% more likely to walk in a neighborhood with sidewalks.



Cities with more bike lanes per square mile have higher levels of bicycle commuting.



More safe travel options

Connect transit to work, to shops, to schools, to homes through appropriate planning and design for transit users.

Create smooth, predictable transit trips by planning and designing for transit vehicles.



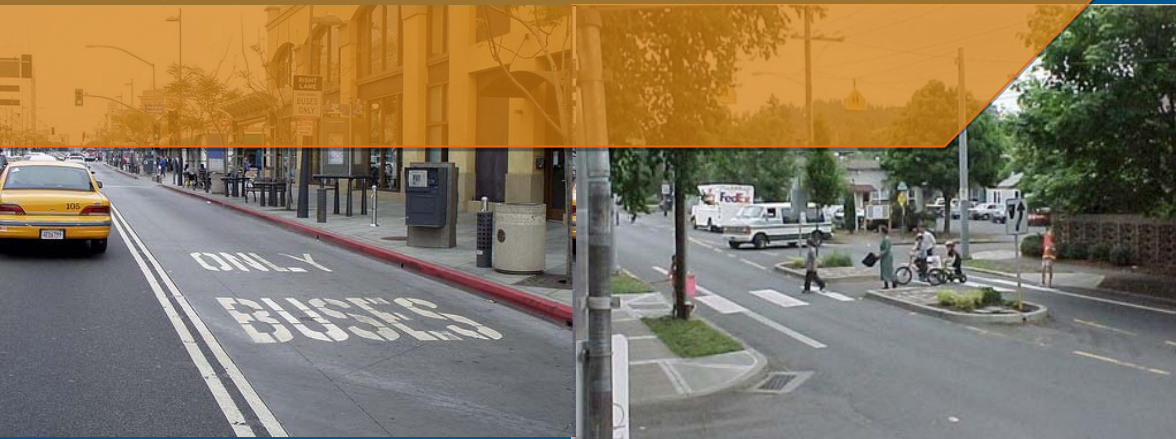
Systematic consideration of all users' needs



Systematic consideration of all users' needs



To gradually create a complete network of roads that serve all users.



Systematic consideration of all users' needs

Integrate the needs of all road users into *everyday* transportation planning and design practices – and maintenance.



Systematic consideration of all users' needs



To save money: in the long run, retrofit projects always cost more than getting it right the first time.

San Antonio Policies

- MPO Resolution: March 2009



A Resolution Supporting a "Complete Streets" Policy

J.V. MPO

WHEREAS, "Complete Streets" are defined as roadways that enable safe and convenient access for all users, including pedestrians, bicyclists, transit riders, and drivers (of all ages) and is conducive to efficient movement of people; and

WHEREAS, "Complete Streets" policies support the San Antonio-Bexar County Metropolitan Planning Organization's (MPO) Metropolitan Transportation Plan mission statement which states "The San Antonio metropolitan area is served by an environmentally friendly transportation system where everyone is able to walk, ride, drive or wheel in a safe, convenient, and affordable

San Antonio Policies

- Healthy Kids Healthy Communities: May 2009
- Communities Putting Prevention to Work (CPPW)
: April 2010

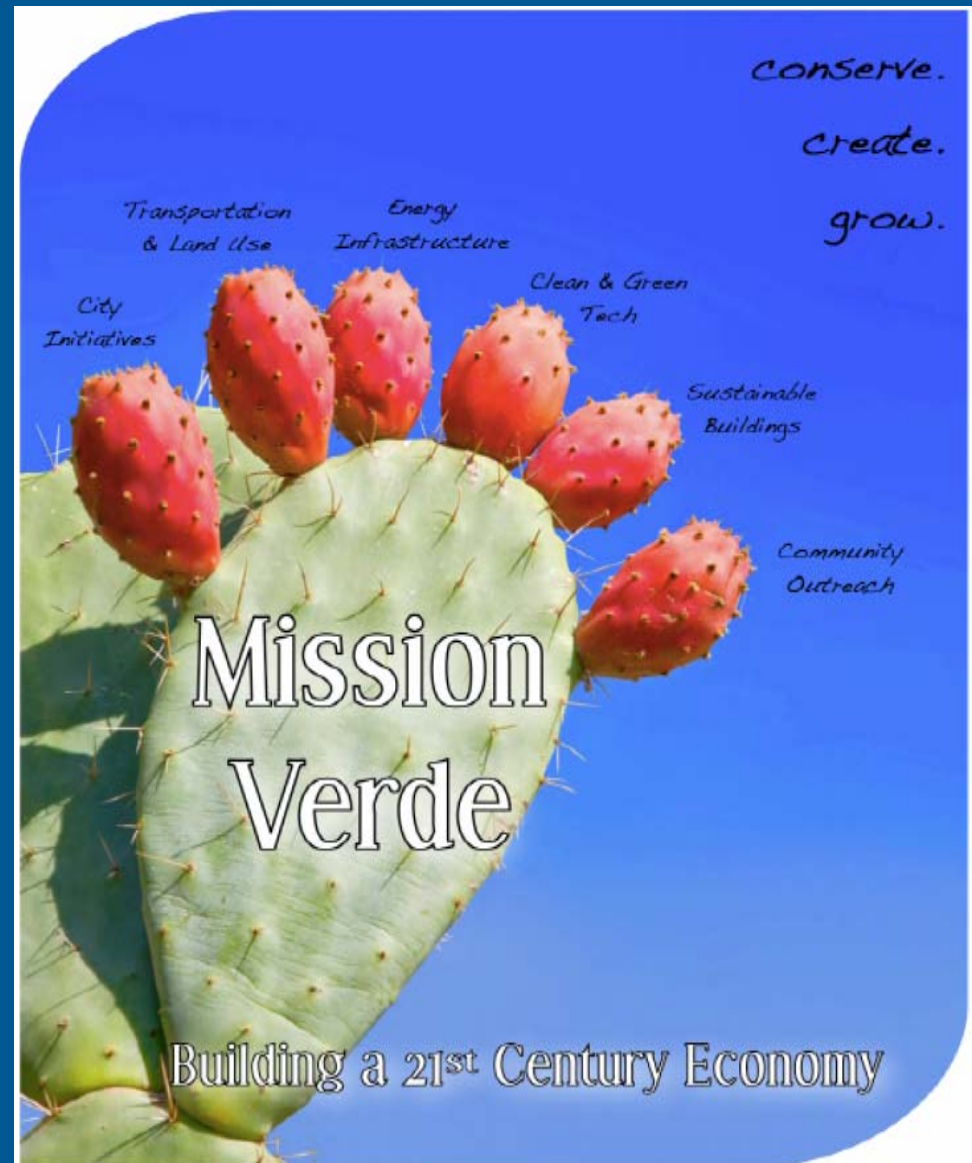
Healthy Kids, Healthy Communities

Supporting Community Action to
Prevent Childhood Obesity



San Antonio Policies

- Mission Verde: February 4, 2010
 - an integrated, efficient, multi-modal surface transportation system
 - including vehicle, bus, and rail transit
 - complete streets and intersections
 - pedestrian and bicycle routes and trails
 - intelligent transportation and goods movement systems
 - integrate land use and development



Resources

An aerial photograph of a city street. On the left, two yellow taxis and a dark car are driving. On the right, a sidewalk cafe has several tables with people sitting under a red umbrella. A green-painted bike lane with a white arrow and a bicycle symbol is on the far right. A blue semi-transparent banner is at the top, and a brown arrow-shaped banner is on the left side.

- completestreets.org
- nplanonline.org
- 207-5495