

CSS Workshop

Jonathan Bean, PE
Trinity University/WTS
San Antonio Region
July 27, 2010

CSS Workshop

- TxDOT and CSS
- Sample of San Antonio District Experience with CSS

TxDOT and CSS

- Establish Vision or Long Term Objectives for a Corridor
- Compatibility Between Roadway and Land-Use
- Establishment of Public/Private Partnerships
- Identification of Design Flexibility
- Establishment and Education of Stakeholders
- Community and Agency Priorities
- Not a New Concept

TxDOT and CSS

- Modes
 - i.e. pedestrians, cyclists, railroad, tubers
- Access
 - i.e. adjacent properties, waterway
- Historic
 - i.e. architecture, views, proximity
- Environmental
 - i.e. biological, water quality
- Design criteria
 - i.e. design speed, hydraulic frequency, cross-section

TxDOT and CSS

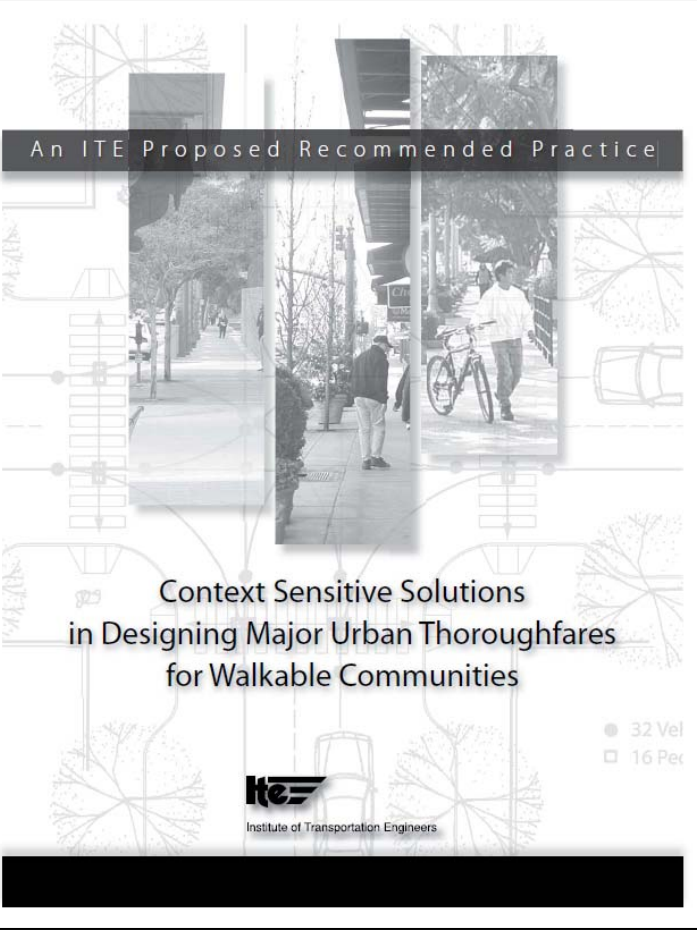
Project Development Process Manual



Revised June 2009

© 2009 by Texas Department of Transportation
(512) 302-2453 all rights reserved

An ITE Proposed Recommended Practice



Context Sensitive Solutions in Designing Major Urban Thoroughfares for Walkable Communities

● 32 Vel
□ 16 Pec

ite
Institute of Transportation Engineers

TxDOT and CSS

- Workshops for TxDOT employees as well as Stakeholders in Metro Areas
- Training TBD

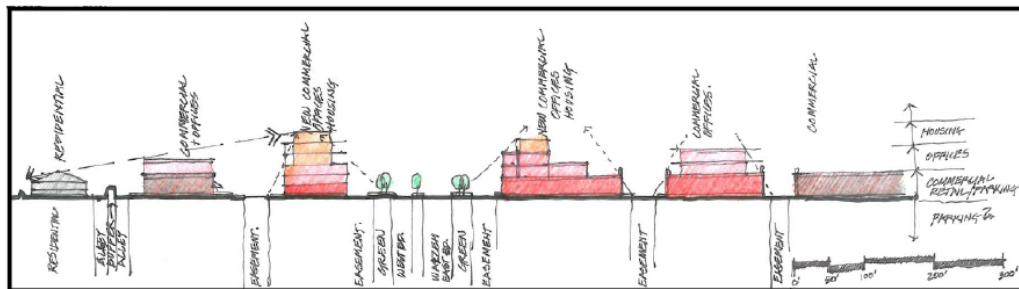


Walzem Road

Walzem Road - Windcrest



Walzem Road - Windcrest



WALZEM ROAD—BECOMING A BOULEVARD

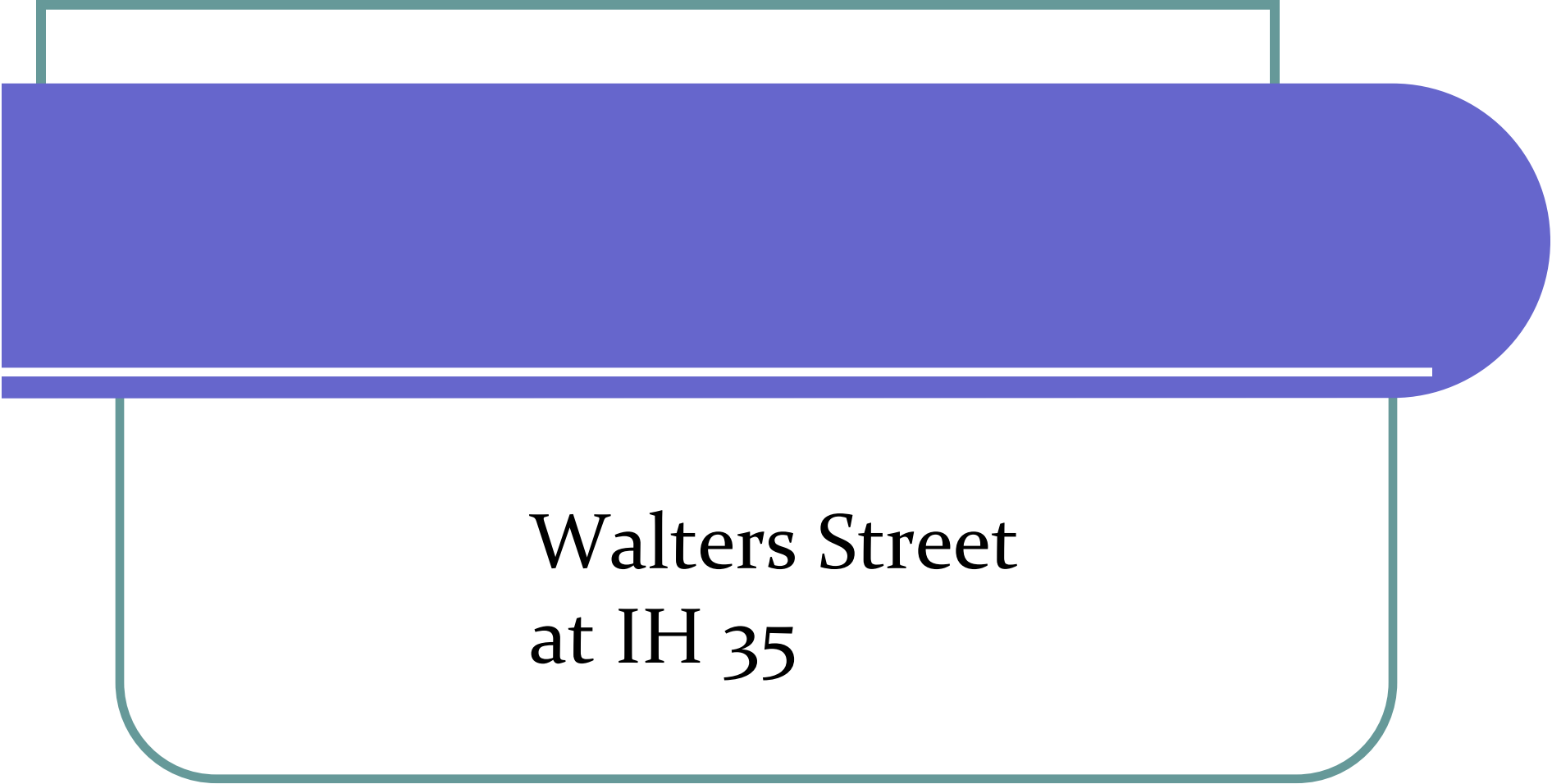


Walzem Road - Medians



Walzem Road - Medians





Walters Street
at IH 35

Walters Street at IH 35



Walters Street at IH 35



Walters Street at IH 35



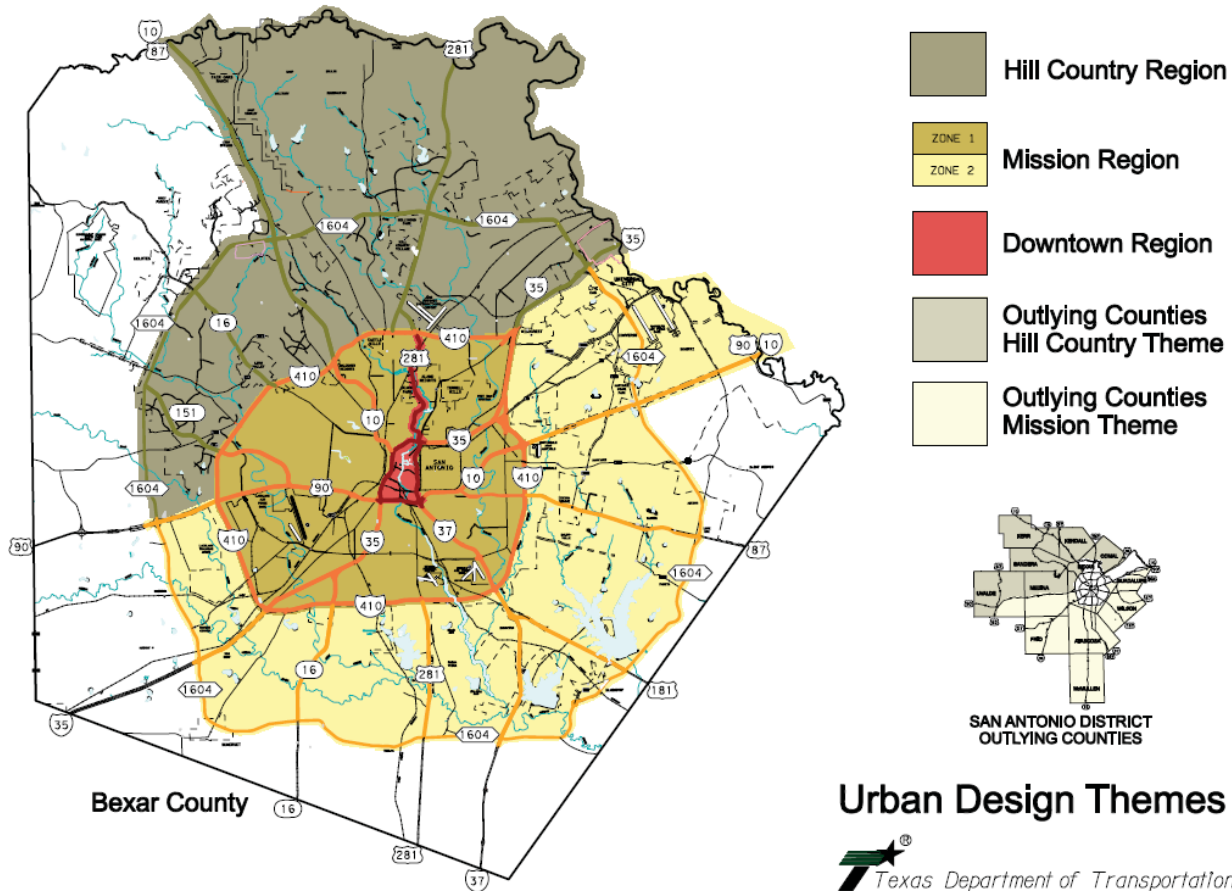
Walters Street at IH 35



Urban Design Themes

- Aesthetic Theme “overlays”
 - Functional hierarchy
 - Color Palates and Textures
 - Structural elements
 - Consistency
 - Thematic Focal Points

Urban Design Themes



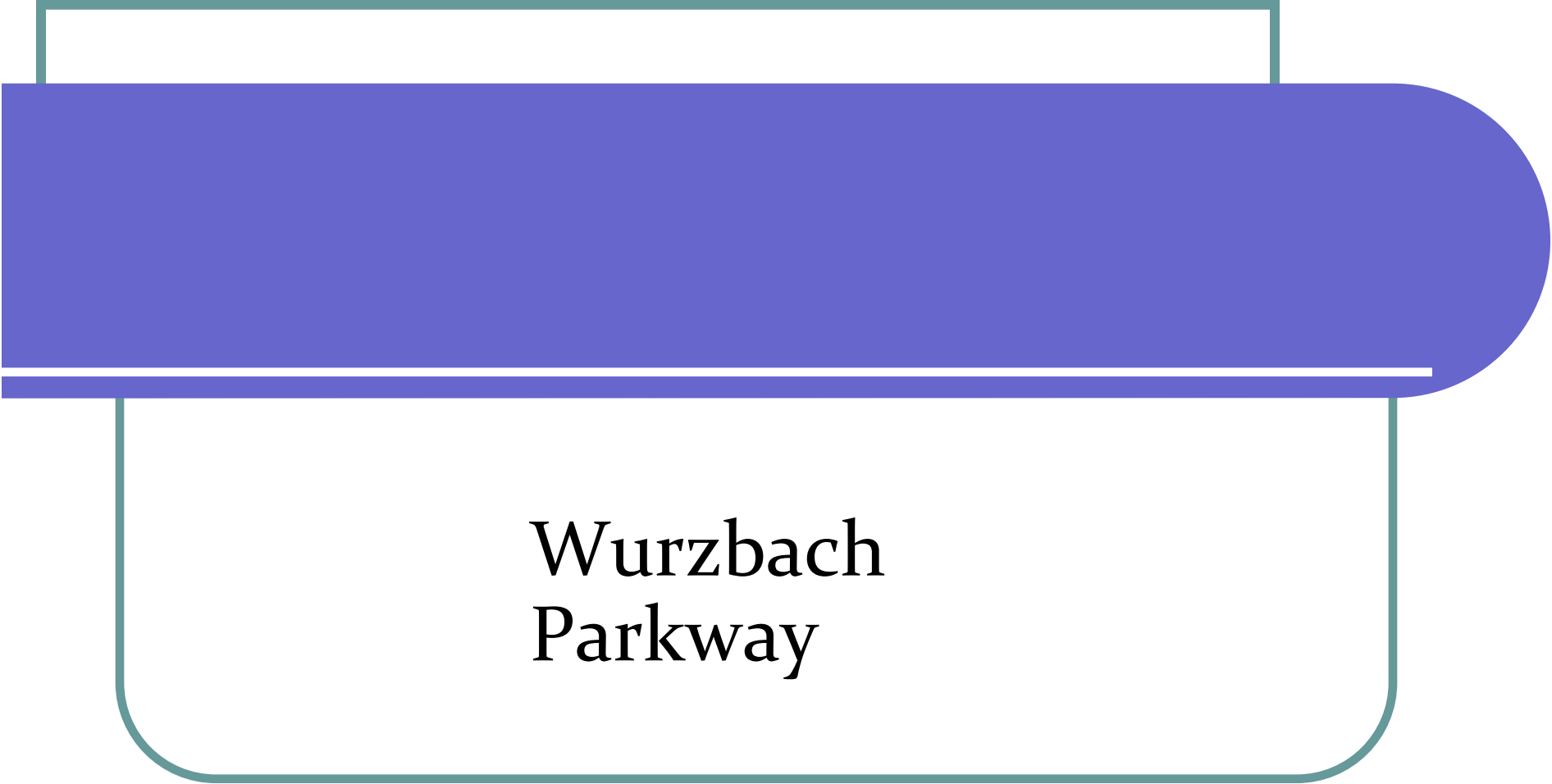
Urban Design Themes

Urban Design Themes



Hill Country Theme – Dominion Overpass





Wurzbach
Parkway

Wurzbach Parkway



Wurzbach Parkway



Wurzbach Parkway



Wurzbach Parkway





Gruene Road

Gruene Road



Gruene Road



Gruene Road



Gruene Road



Gruene Road



Gruene Road



Gruene Road



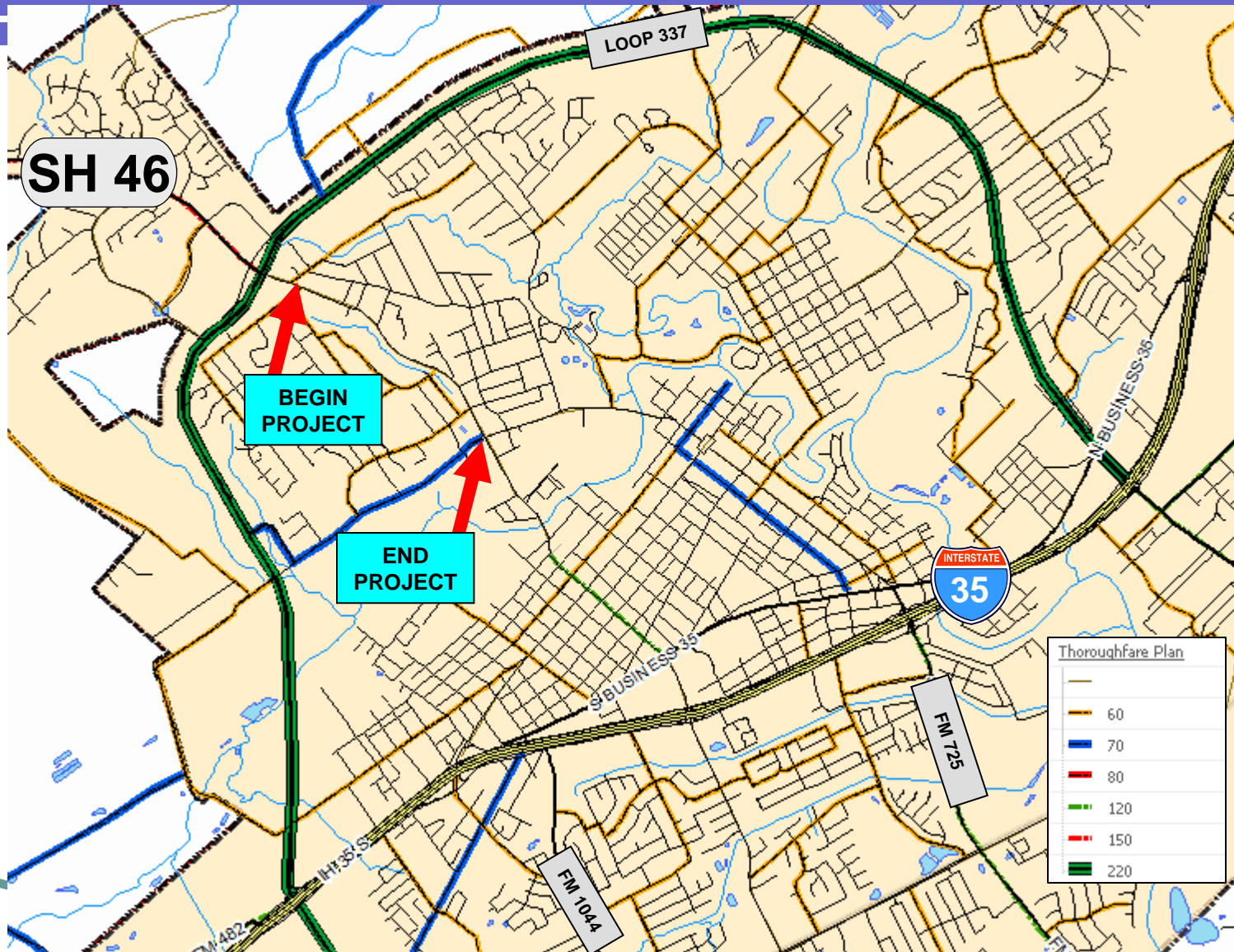
Gruene Road



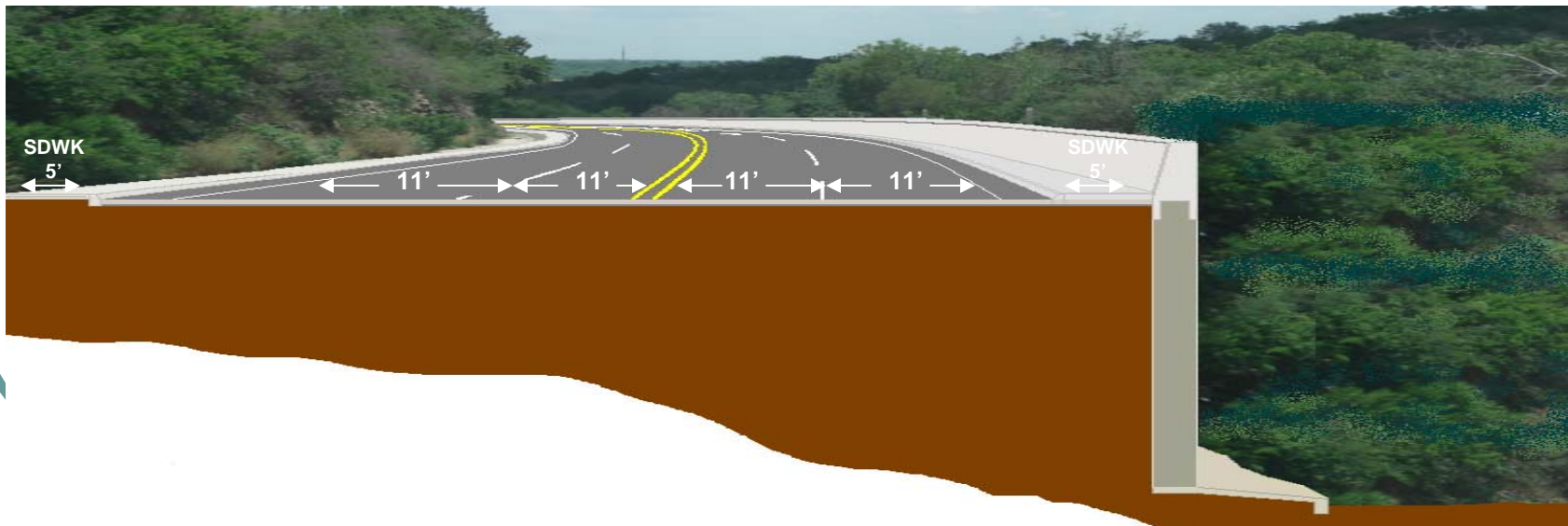


BS 46 in New
Braunfels

BS 46 in New Braunfels



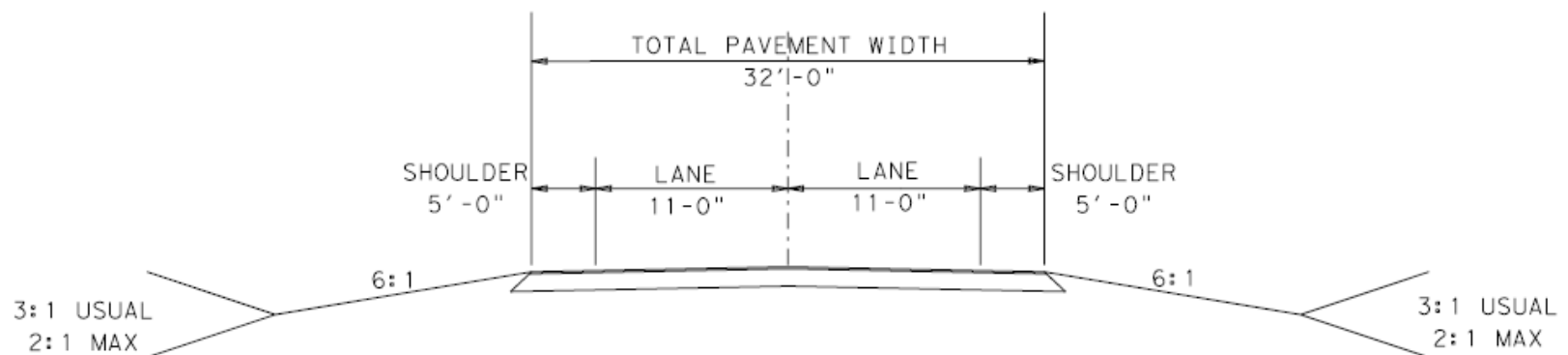
BS 46 in New Braunfels BS 46 in New Braunfels





Utopia 100K

“Utopia 100 K”



Shoulder Surface Course Grade 5 Aggregate
Shoulder Surface Color to Contrast With Main Lane Color

PROPOSED MINIMUM TYPICAL
For Bicycle Accommodation



Questions ??