



# CAPITAL AREA SECTION



August 2008

Volume 9, Issue 4

## MINUTES OF THE JUNE MEETING

The third meeting of the year was held on June 6, 2008 at One Texas Center, 8th Floor Large Conference Room.

President Doug Skowronek introduced the speaker, Jana McCann who is an architect/urban designer and Principal of ROMA Design Group.

Mrs. McCann presented a draft Urban Rail Study that is currently in progress.

## Current Officers

Please contact any of the following officers, if you have questions about the Capital Area Section, TexITE, or ITE.

**Doug Skowronek**, President, 416-3247

[DSkowro@dot.state.tx.us](mailto:DSkowro@dot.state.tx.us)

**Gordon Derr**, Vice-President, 974-7228

[Gordon.Derr@ci.austin.tx.us](mailto:Gordon.Derr@ci.austin.tx.us)

**Alex Reyna**, Secretary-Treasurer, 897-5572

[amereyna@msn.com](mailto:amereyna@msn.com)

**David Carey**, Section Representative, 837-8420

[David.Carey@siemens.com](mailto:David.Carey@siemens.com)

**Rene U. Garza**, Past President, 342-3270

[Rugarza@pbsj.com](mailto:Rugarza@pbsj.com)

The Section Secretary-Treasurer can provide you with a National membership application and the local section application is printed at the end of every newsletter.

## ITE Website Addresses

If you are interested in the latest developments at ITE, check out the following websites:

- ITE – [www.ite.org](http://www.ite.org)
- TexITE – [www.texite.org](http://www.texite.org)

You can find section meeting information at this website: <http://www.texite.org/austin/mainaustin.htm>. Section member Isam Bandak, PE with OTHON Inc. has agreed to maintain the section web site for us. Thank Isam next time you see him.

## Next Meeting

Topic	Date
Minimum Maintained Sign Retroreflectivity Standards	August 1, 2008

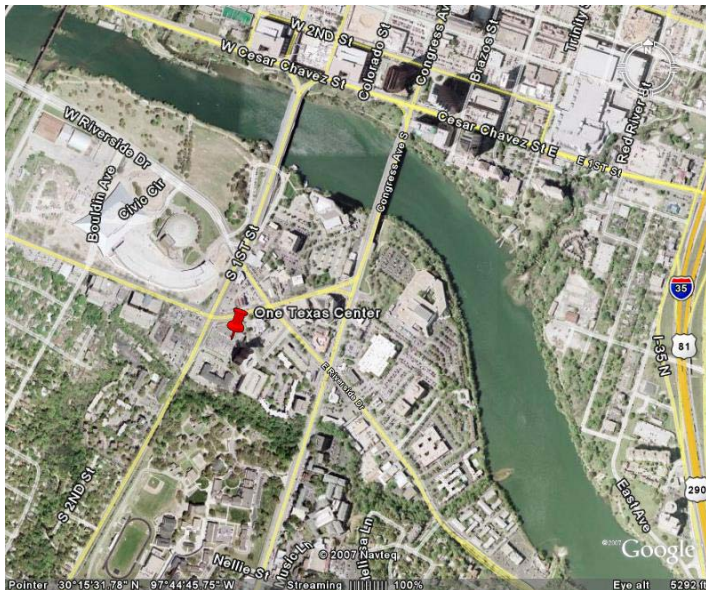
Our speaker for the August 1<sup>st</sup> section meeting will discuss the new standards for minimum maintained retroreflectivity levels for traffic signs which are being incorporated into the Texas MUTCD. The updated manual, with the new retroreflectivity standards, will soon be issued as Revision 1 of the 2006 Edition of the Texas MUTCD.

## NEXT MEETING:

**Friday, August 1, 2008, 12:00 noon**


At

City of Austin  
One Texas Center Room 325  
505 Barton Springs Road  
Austin, Texas 78704




**Professional Services Directory**

Of all that we've built  
over the last 40 years,  
trust is the thing we value most.



Austin: 512-454-8711  
San Antonio: 210-375-9000  
www.pape-dawson.com

TRAFFIC ENGINEERING | SURVEYING | TRANSPORTATION PLANNING | STREET & ROADWAY DESIGN  
FEASIBILITY, CORRIDOR & ROUTE STUDIES | CONSTRUCTION PLANS, SPECIFICATIONS & ESTIMATES



Kimley-Horn  
and Associates, Inc.

- 10415 Morado Circle  
Bldg. I, Suite 300  
Austin, Texas 78759

Phone: 512-418-1771  
Fax: 512-418-1791

ENGINEERING,  
TRANSPORTATION,  
PLANNING,  
AND MORE

ARTC llc.

- Turning Movement Counts
- 24 Hour Volume Counts
- 24 Hour Volume with Speed Counts
- Delay Studies
- Gap Studies
- Travel Time Studies
- Saturation Flow Rate Studies

AR Traffic Counting, LLC.

www.artrafficcounting.com

P.O. BOX 202347  
Austin, TX 78720  
Phone/Fax 512-366-8189  
Toll Free 888-384-5558

Carter Burgess

Engineering, Architecture  
and Related Services



2705 Bee Cave Road  
Suite 300  
Austin, Texas 78746  
Phone: 512.314.3100  
Fax: 512.314.3135  
www.c-b.com/austin

we find solutions

SIEMENS

Systems Integration ■ ITS Strategic Planning and Design ■ Offices located throughout  
Integration Support Products ■ Operations and Management the United States

**Siemens**  
ITS Consulting  
www.ITSSIEMENS.COM

8004 Cameron Road  
Austin, Texas 78754-3899  
Ph: 512.837.8310 Fax: 512.837.8439



CONSULTING ENGINEERS

Civil  
Transportation  
Environmental  
CM

Austin  
512 327 7795

Houston  
713 975 8555

Dallas  
214 340 7344

www.othon.com



Building Alliances  
Analyzing Possibilities  
Finding Solutions

Transportation Planning, Traffic Engineering & Data Collection

(512) 821-2081      www.alliance-transportation.com



Engineering  
Environmental Consulting  
Surveying

6504 Bridge Point Parkway, Suite 200  
Austin, Texas 78730  
512.327.6840

<b>Austin Downtown</b>	504 Lavaca Street
Traffic Division	Suite 1175
	Austin, TX 78701-2817
	www.hdrinc.com
<b>HDR</b>   → <b>WHM</b> ←	Phone (512) 904-3700
	Fax (512) 904-3773

Advertisements are a great way for us to support our Section. The cost is \$100 per year (or \$20 per newsletter issue) for a business card size space printed in each issue of the newsletter. If you are interested in advertising or if you have comments or questions, you may contact one of the officers.

## About Our August Meeting Speaker

Douglas Skowronek, P.E., PTOE, currently works in the Texas Department of Transportation's Traffic Operations Division. He has a BS and MS in civil engineering from Texas A&M University and previously worked for the Texas Transportation Institute in Arlington.

The proposed Revision 1 of the 2006 Texas Manual on Uniform Traffic Control Devices has been published in the Texas Register for public comment and it includes new standards for minimum maintained sign retroreflectivity. These standards were issued by FHWA via a Final Rule effective January 22, 2008 with phased-in compliance dates. The new requirements apply to regulatory, warning, and guide (including street name) signs. The presentation will consist of specifics about the new requirements.

## Future Meetings

Tentative 2008 future meeting dates for your calendar are:

October 3, 2008  
December 5, 2008

If anyone has a suggestion for a meeting topic or would like to present a topic at a future meeting, please let one of the officers know.

## ITE News

### [ITE 2008 Annual Meeting and Exhibit](#)

August 17 - 20

Anaheim Convention Center



## TexITE Winter Meeting

February 5-7, 2009  
Lubbock, Texas

## Professional Development Hours (PDH)

As a reminder to all professional engineers, the Texas Board of Professional Engineers, Continuing Education Program rule requires 15 Professional Development Hours (PDH) per year for license renewal. At least 1 PDH must be in the area of professional ethics.

Attendance at each Capitol Area Section Meeting counts as one hour towards your 15 PDH requirement.

## Section News

If you have news items, technical information, or upcoming events you would like to place in future newsletters, please send them to Gordon Derr at [Gordon.Derr@ci.austin.tx.us](mailto:Gordon.Derr@ci.austin.tx.us).

If you would like to run for office, please contact the nominating committee, which is chaired by Brian D. Van De Walle, P.E., PTOE, Kimley-Horn and Associates; Phone: (512) 418-4500 and James Kratz, P.E., Jacobs Carter Burgess; Phone: ((512) 314-3178

The City of Austin will have a new Public Works Director on August 18th. His name is Harold Lazarus and he will be joining the City from New Jersey. During the 90's he was Public Works Director in Newark, New Jersey.

## UT Student Chapter

If you would like to speak at one of the Student Chapter meetings, please contact their officers at [utexasite@gmail.com](mailto:utexasite@gmail.com).

## Lunch Order

**Cost for box lunch is \$6.00.**

If you are interested in ordering sandwiches from Thundercloud's Sub, CIRCLE your selections below:

Name: \_\_\_\_\_

*Meat:* Turkey, Capicola, Ham, Roast Beef, Tuna, Chicken Salad, Genoa Salami, Egg Salad

*Bread:* White, Wheat    *Tomato:* Y or N

*Lettuce:* Y or N

*Cookie:* Chocolate Chip, Oatmeal Raisin

Phone your order to Alex Reyna at 897-5572 or e-mail to [amereyna@msn.com](mailto:amereyna@msn.com) no later than 9am, Friday August 1, 2008.

**Drinks available on 3<sup>rd</sup> floor at One Texas Center**

---

## Membership Information

Please print the following information about yourself:

General Information
Name (full name plus professional designation; i.e. PE, AICP, EIT, M.S., etc.):
Job Title and Employer: _____
Business Mailing Address: _____
Daytime Phone:
Daytime Fax:
E-mail Address:

ITE Membership Information
Please mark all that apply:
<input type="checkbox"/> I am a member of ITE
<input type="checkbox"/> I am a member of TexITE, the Texas Section of ITE
<input type="checkbox"/> I would like information on ITE membership

Completed the form and bring it to the next section meeting with \$5.00 annual dues payment.