



# CAPITAL AREA SECTION



June 2008

Volume 9, Issue 3

## MINUTES OF THE FEBRUARY MEETING

The second meeting of the year was held on April 4, 2008 at One Texas Center, 3<sup>rd</sup> Floor Training Room.

President Doug Skowronek introduced the speaker, Ronnie Bell, P.E., an engineer for the City of Austin Transportation Division of Public Works.

Mr. Bell talked about a general overview of the MUTCD changes proposed by FHWA for the next MUTCD version. He emphasized that the proposal has been published in the Federal Register and public comments are being accepted until July 31, 2008.

## Current Officers

Please contact any of the following officers, if you have questions about the Capital Area Section, TexITE, or ITE.

**Doug Skowronek**, President, 416-3247

[DSkowro@dot.state.tx.us](mailto:DSkowro@dot.state.tx.us)

**Gordon Derr**, Vice-President, 974-7228

[Gordon.Derr@ci.austin.tx.us](mailto:Gordon.Derr@ci.austin.tx.us)

**Alex Reyna**, Secretary-Treasurer, 904-3723

[Alex.Reyna@hdrinc.com](mailto:Alex.Reyna@hdrinc.com)

**David Carey**, Section Representative, 837-8420

[David.Carey@siemens.com](mailto:David.Carey@siemens.com)

**Rene U. Garza**, Past President, 342-3270

[Rugarza@pbsj.com](mailto:Rugarza@pbsj.com)

The Section Secretary-Treasurer can provide you with a National membership application and the local section application is printed at the end of every newsletter.

## ITE Website Addresses

If you are interested in the latest developments at ITE, check out the following websites:

- ITE – [www.ite.org](http://www.ite.org)
- TexITE – [www.texite.org](http://www.texite.org)

You can find section meeting information at this website: <http://www.texite.org/austin/mainaustin.htm>. Section member Isam Bandak, PE with OTHON Inc. has agreed to maintain the section web site for us. Thank Isam next time you see him.

## Next Meeting

Topic	Date
DRAFT Urban Rail Study for Austin	June 6, 2008

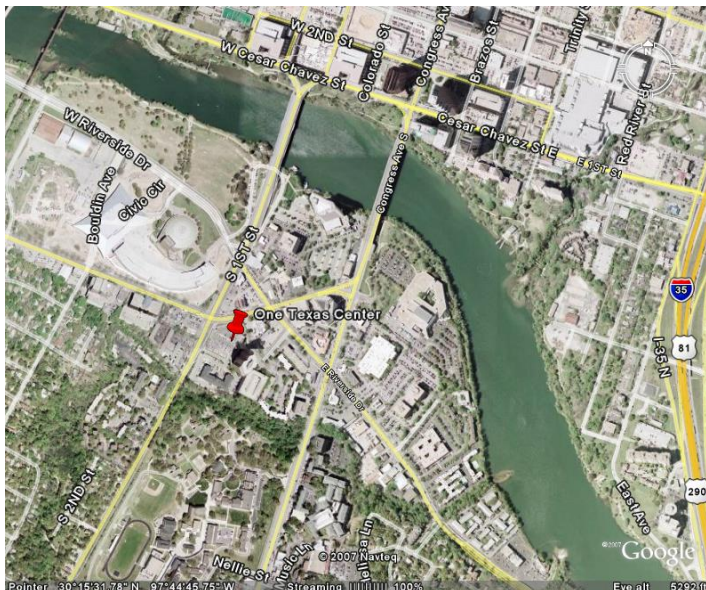
Our speaker for the June 6 section meeting will present a draft Urban Rail Study that is currently in progress.

## NEXT MEETING:

**Friday, June 6, 2008, 12:00 noon**


At

City of Austin  
One Texas Center  
8<sup>th</sup> Floor Large Conference Room  
505 Barton Springs Road  
Austin, Texas 78704



**Professional Services Directory**

Of all that we've built  
over the last 40 years,  
trust is the thing we value most.



Austin: 512-454-8711  
San Antonio: 210-375-9000  
www.pape-dawson.com

TRAFFIC ENGINEERING | SURVEYING | TRANSPORTATION PLANNING | STREET & ROADWAY DESIGN  
FEASIBILITY, CORRIDOR & ROUTE STUDIES | CONSTRUCTION PLANS, SPECIFICATIONS & ESTIMATES



Kimley-Horn  
and Associates, Inc.

- 10415 Morado Circle  
Bldg. I, Suite 300  
Austin, Texas 78759

Phone: 512-418-1771  
Fax: 512-418-1791

ENGINEERING,  
TRANSPORTATION,  
PLANNING,  
AND MORE



**ARTC IIc.**

- Turning Movement Counts
- 24 Hour Volume Counts
- 24 Hour Volume with Speed Counts
- Delay Studies
- Gap Studies
- Travel Time Studies
- Saturation Flow Rate Studies

AR Traffic Counting, LLC.  
www.artrafficcounting.com

P.O. BOX 202347  
Austin, TX 78720  
Phone/Fax 512-366-8189  
Toll Free 888-384-5558



**Carter Burgess** *Engineering, Architecture  
and Related Services*

2705 Bee Cave Road  
Suite 300  
Austin, Texas 78746  
Phone: 512.314.3100  
Fax: 512.314.3135  
www.c-b.com/austin

we find solutions



Systems Integration ■ ITS Strategic Planning and Design  
Integration Support Products ■ Operations and Management

Offices located throughout  
the United States

Siemens  
ITS Consulting  
www.ITSSIEMENS.COM

8004 Cameron Road  
Austin, Texas 78754-3899  
Ph: 512.837.8310 Fax: 512.837.8439



**OTHON**  
CONSULTING ENGINEERS

Civil  
Transportation  
Environmental  
CM

Austin  
512 327 7795

Houston  
713 975 8555

Dallas  
214 340 7344

www.othon.com




**ALLIANCE**  
Transportation Group, Inc.

*Building Alliances  
Analyzing Possibilities  
Finding Solutions*

Transportation Planning, Traffic Engineering & Data Collection

(512) 821-2081      www.alliance-transportation.com



Engineering  
Environmental Consulting  
Surveying

6504 Bridge Point Parkway, Suite 200  
Austin, Texas 78730  
512.327.6840

**Austin Downtown** 504 Lavaca Street  
Traffic Division Suite 1175  
Austin, TX 78701-2817  
www.hdrinc.com

HDR | → W|H| ← Phone (512) 904-3700  
Fax (512) 904-3773

Advertisements are a great way for us to support our Section. The cost is \$100 per year (or \$20 per newsletter issue) for a business card size space printed in each issue of the newsletter. If you are interested in advertising or if you have comments or questions, you may contact one of the officers.

---

## About Our June Meeting Speaker

Jana McCann is an architect/urban designer and Principal of ROMA Austin since 2005. She brings strong experience in transit facility design and transit-oriented development planning, streetscape and public space design, historic preservation and adaptive re-use design, as well as management of large-scale civic projects. Current projects include the implementation of the Mueller Master Plan, the Downtown Austin Plan, the extension of the Pfluger Pedestrian Bridge and various mixed-use and transit-oriented development projects with private developers.

Jana is a Texas native and a 1980 graduate of University of Texas at Austin's School of Architecture with High Honors. In 1987, she received her Masters in History and Theory of Architecture with Distinction at the Architectural Association in London, where she worked in and became licensed as an architect on urban infill projects. Jana moved to Paris in 1990 to work on the new line of the Paris Metro, returning to Austin in 1997 to teach and practice.

## Future Meetings

Tentative 2008 future meeting dates for your calendar are:

August 1, 2008  
October 3, 2008  
December 5, 2008

If anyone has a suggestion for a meeting topic or would like to present a topic at a future meeting, please let one of the officers know.

## ITE News

### ☰ **TexITE 2008 Summer Meeting**

San Antonio, Texas  
June 26-28, 2008  
St. Anthony Hotel  
Chair: Dale Picha

### [ITE 2008 Annual Meeting and Exhibit](#)

August 17-20

Anaheim Convention Center



## Professional Development Hours (PDH)

As a reminder to all professional engineers, the Texas Board of Professional Engineers, Continuing Education Program rule requires 15 Professional Development Hours (PDH) per year for license renewal. At least 1 PDH must be in the area of professional ethics.

Attendance at each Capitol Area Section Meeting counts as one hour towards your 15 PDH requirement.

## Section News

If you have news items, technical information, or upcoming events you would like to place in future newsletters, please send them to Gordon Derr at [Gordon.Derr@ci.austin.tx.us](mailto:Gordon.Derr@ci.austin.tx.us).

## UT Student Chapter

If you would like to speak at one of the Student Chapter meetings, please contact their officers at [utexasite@gmail.com](mailto:utexasite@gmail.com).

## Lunch Order

### **Cost for box lunch is \$6.00.**

If you are interested in ordering sandwiches from Thundercloud's Sub, CIRCLE your selections below:

Name: \_\_\_\_\_

*Meat:* Turkey, Capicola, Ham, Roast Beef, Tuna, Chicken Salad, Genoa Salami, Egg Salad

*Bread:* White, Wheat    *Tomato:* Y or N

*Lettuce:* Y or N

*Cookie:* Chocolate Chip, Oatmeal Raisin

Phone your order to Alex Reyna at 904-3723 or e-mail to [Alex.reyna@hdrinc.com](mailto:Alex.reyna@hdrinc.com) no later than 9am, Friday June 6, 2008.

**Drinks available on 3<sup>rd</sup> floor at One Texas Center**

---

## Membership Information

Please print the following information about yourself:

General Information
Name (full name plus professional designation; i.e. PE, AICP, EIT, M.S., etc.):
Job Title and Employer: _____
Business Mailing Address: _____
Daytime Phone:
Daytime Fax:
E-mail Address:

ITE Membership Information
Please mark all that apply:
<input type="checkbox"/> I am a member of ITE
<input type="checkbox"/> I am a member of TexITE, the Texas Section of ITE
<input type="checkbox"/> I would like information on ITE membership

Send completed form to **Capital Area Section, c/o Alex Reyna, 504 Lavaca Street, Suite 1175, Austin, TX 78701** with \$5.00 annual dues payment, or bring it to the next section meeting.

Alex Reyna  
504 Lavaca Street, Suite 1175  
Austin, TX 78701  
[alex.reyna@hdrinc.com](mailto:alex.reyna@hdrinc.com)